

# 6817 Cork Drive

**TODD**  
*Homes* llc.com  
Affordable Luxury

WEST RIDGE | WEST CHESTER, OHIO



*The Melrose*

## THE MELROSE FEATURES:



Introducing a stunning Custom Craftsman spanning 3140 SF, featuring 4BR's & 3.5BA's! Step inside to discover an open-concept layout, enhanced by soaring ceilings that create a sense of connectivity throughout the living spaces. Enjoy the expansive great room with a fireplace that opens to a covered patio with breathtaking wooded views. Culinary enthusiasts will adore the upscale chef's kitchen with quartz countertops, island, soft-close shaker cabinetry with crown molding, ambient lighting & stainless steel appliances, including a gas stove with vented hood. Retreat to the private primary suite, boasting a raised tray ceiling, massive walk-in closet and a spa-like bath featuring a luxurious walk-in shower with exotic tile, a bathing bench & a double vanity. Second floor includes a versatile open loft. The finished, walkout lower level features 9ft ceilings, bedroom, full bath, recreation room & lots of storage space. Experience luxurious living at its finest in this extraordinary home!

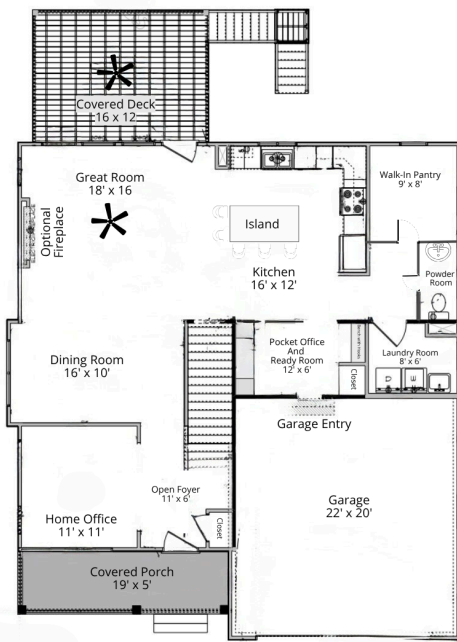
 **4**  
Bedrooms

 **3.5**  
Bathrooms

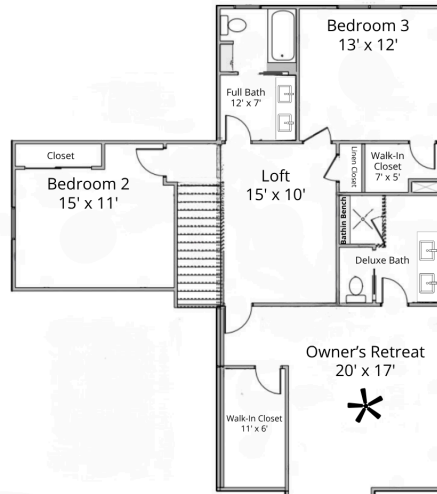
 **2**  
Garage

 **3140**  
Square Feet

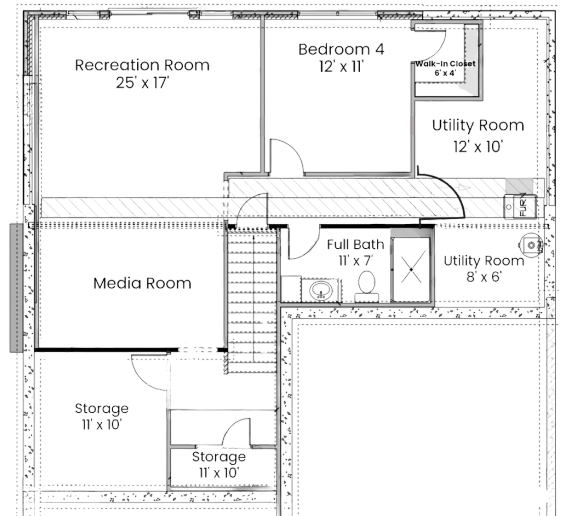




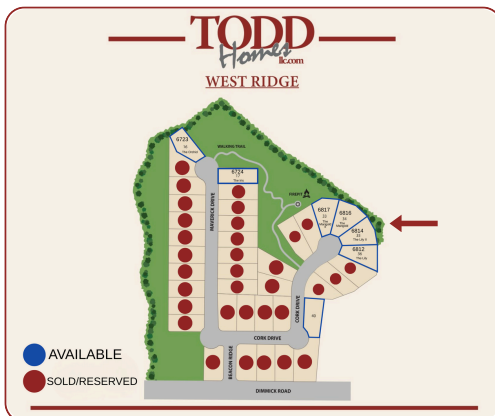
First Floor 1208SF



Second Floor 1174SF



Lower Level - 758SF



Explore This Home



Visit Todd Homes LLC

Copyright 2025 Todd Homes LLC. All rights reserved. Please be aware that, in line with our dedication to ongoing product enhancement, we reserve the right to alter our homes pricing, availability, features, choice of product brands, dimensions, architectural details, and design specifications. This brochure serves solely for illustrative purposes and does not form any part of a legally binding contract. Room sizes approximate.

CONTACT US 513.823.3774



VISIT US: [www.toddhomesllc.com](http://www.toddhomesllc.com)