

FLOORPLAN

Plan C410
Elevation A with
Manufactured Stone Veneer



American
Legend
HOMES®

WWW.AMLEGENDHOMES.COM



FLOORPLAN

Plan C410



Elevation B with Stone



Elevation C



Plan C410
Revision 04/19/2021

WWW.AMLEGENDHOMES.COM

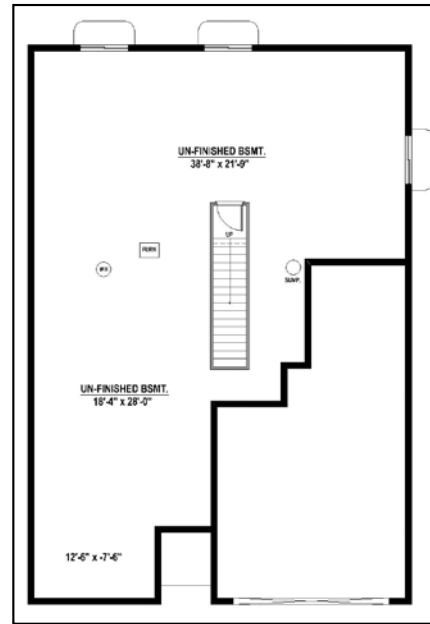
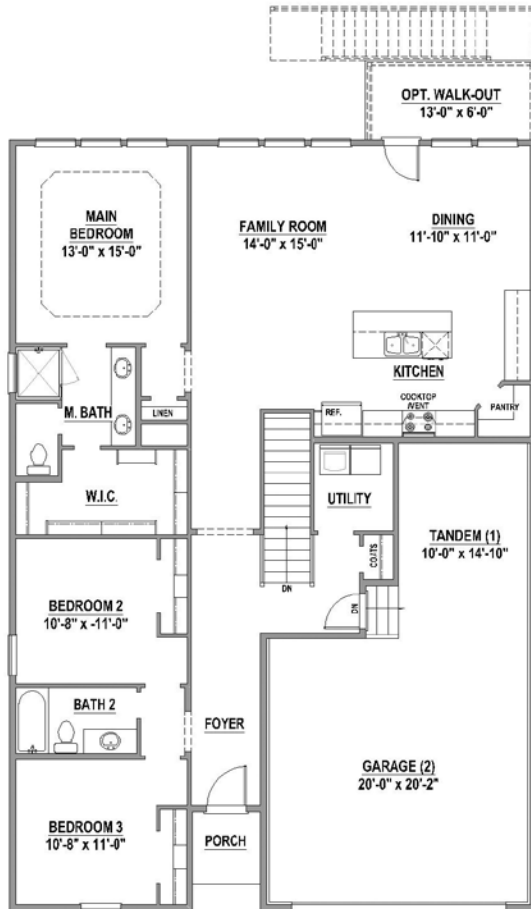
Prices, plans, specifications, square footage and availability are subject to change without notice or prior obligation. Square footages are approximate and may vary upon elevations and/or options selected. Elevations depicted are an artist's rendering and are subject to change or modification without notice. Not responsible for typographical errors. Please see a Sales Associate for more information. American Legend Homes and the ALH logo are registered trademarks of American Legend Homes, LLC. © 2020 American Legend Homes. All rights reserved. Effective 2020



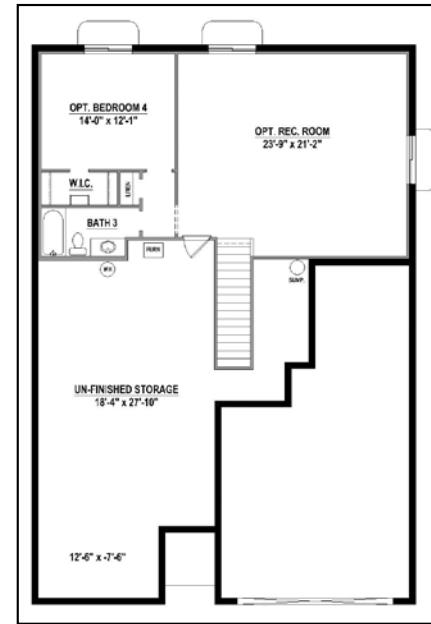
PLAN C410

1,665 SF

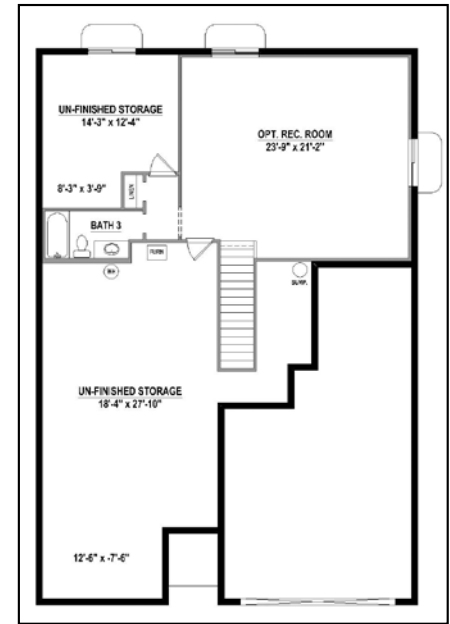
First Floor



Unfinished Basement
- Standard



Optional Rec Room,
Bedrooms 4 with Bath 3 (934 SF)



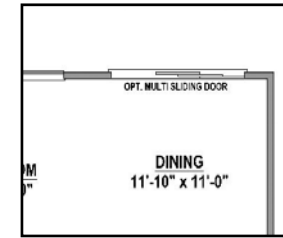
Optional Rec Room
and Bath 3 (705 SF)

Features:

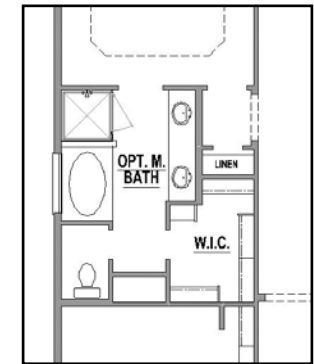
- 1 Story
- 3 Bedrooms
- 2 Full Baths
- 1 Dining Area
- 3-Car Tandem Garage



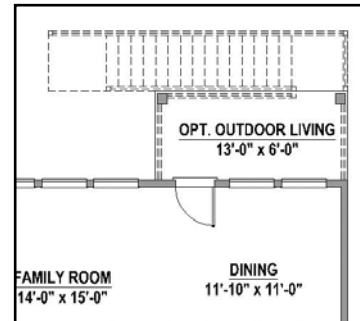
Optional Fireplace



Optional Multi Sliding Door



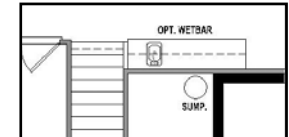
Optional Main Bath Layout



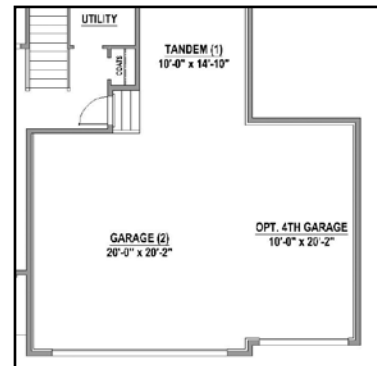
Optional Outdoor Living



Optional Alternate Kitchen Layout



Optional Wet Bar



Optional 4th Car Garage



Optional Walk-Out Basement with Deck Above

Projected HERS Score

57

Your home's HERS score is a projected score based on plans. The lower the number, the more energy efficient the home. To learn more, visit www.hersindex.com

Annual Savings

\$1,800

*Relative to an average U.S. Home

*This information is presented for education purposes only. The HERS index for a confirmed rating will be determined by a third party HERS rater based on data gathered from on-site observations and, if required, testing of rated features for a home as featured, opinionated, oriented, and/or built.
 +Standard new home is based on the RESNET Reference Home definition with a HERS index of 100 (based on the 2006 International Energy Conservation Code)
 ++Typical resale home is based on the U.S. Department of Energy definition with a HERS index of 130.