



PROVIDENCE  
HOMES



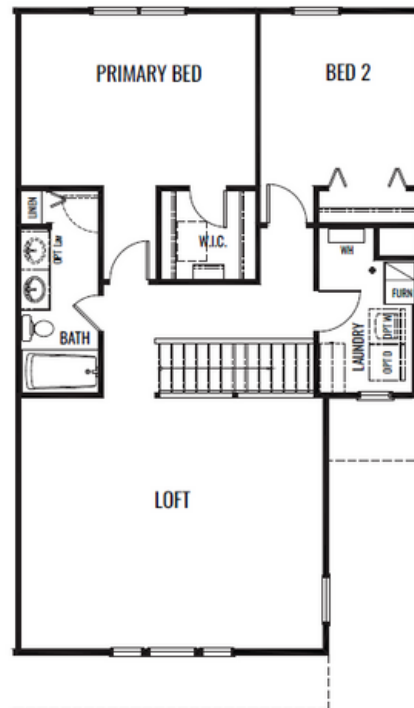
Elevation A

## The Grayson

1616 Sq. Ft. | 2 BDRM + Loft 1.5 BA



FIRST FLOOR



SECOND FLOOR

## Stone Mill - Townhomes

Artist's renderings may vary in precise detail as compared to actual construction. All dimensions are approximate. Providence Real Estate Development, LLC. DBA Providence Homes in an effort to improve its product, reserves the right to make changes without notice. Actual home may be built as shown or reversed as dictated by engineered site plan. © Copyright 2025, Providence Real Estate Development, LLC.



PROVIDENCE  
HOMES



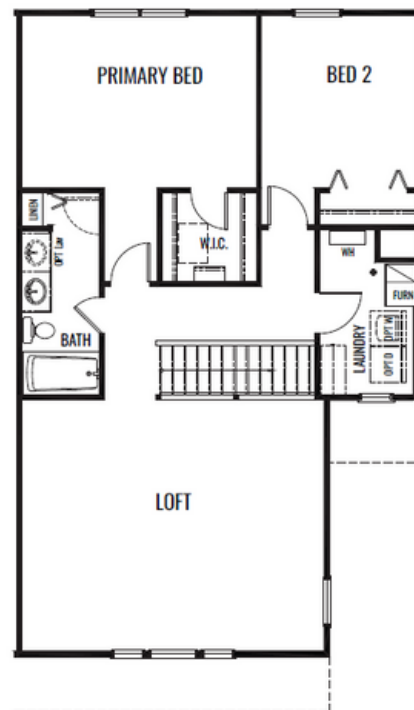
Elevation A

## The Grayson - End Condition

1616 Sq. Ft. | 2 BDRM + Loft 1.5 BA



FIRST FLOOR



SECOND FLOOR

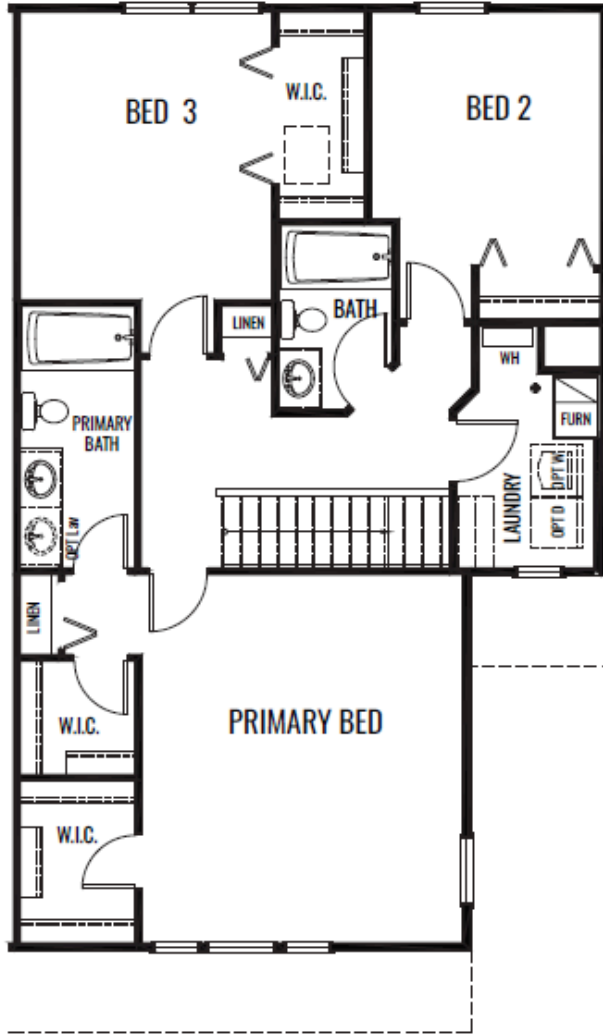
## Stone Mill - Townhomes

Artist's renderings may vary in precise detail as compared to actual construction. All dimensions are approximate. Providence Real Estate Development, LLC. DBA Providence Homes in an effort to improve its product, reserves the right to make changes without notice. Actual home may be built as shown or reversed as dictated by engineered site plan. © Copyright 2025, Providence Real Estate Development, LLC.

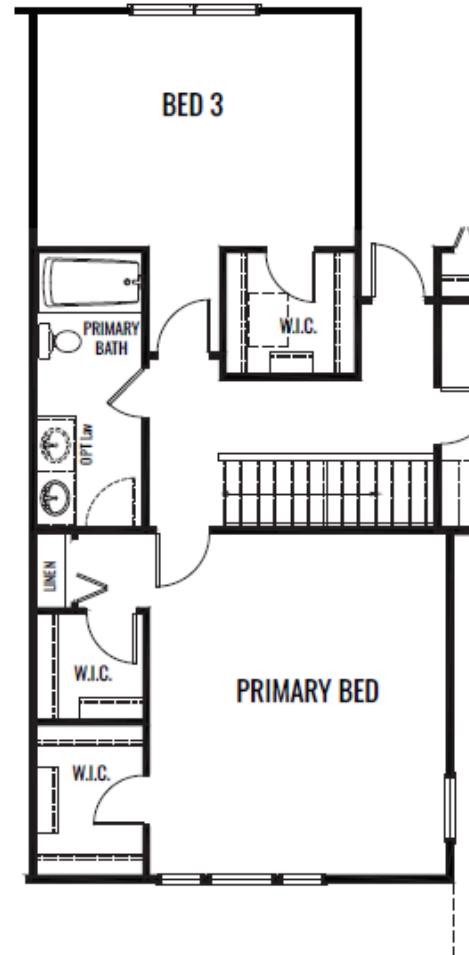


# The Grayson

## OPTIONS



**OPT GRAND PRIVATE BATH**



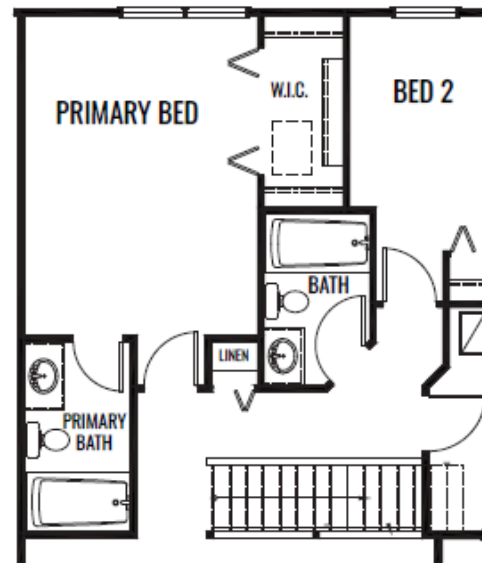
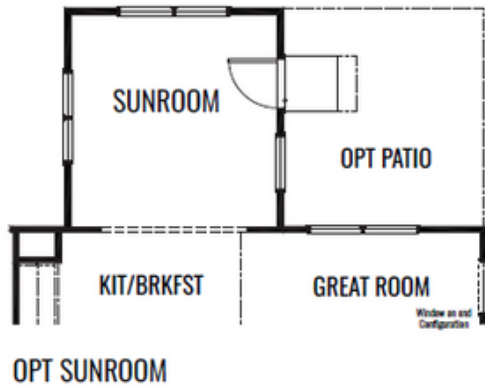
**OPT GRAND PRIMARY BEDROOM**

## Stone Mill - Townhomes

Artist's renderings may vary in precise detail as compared to actual construction. All dimensions are approximate. Providence Real Estate Development, LLC. DBA Providence Homes in an effort to improve its product, reserves the right to make changes without notice. Actual home may be built as shown or reversed as dictated by engineered site plan. © Copyright 2025, Providence Real Estate Development, LLC.

# The Grayson

## OPTIONS



OPT PRIVATE BATH

## Stone Mill - Townhomes

Artist's renderings may vary in precise detail as compared to actual construction. All dimensions are approximate. Providence Real Estate Development, LLC. DBA Providence Homes in an effort to improve its product, reserves the right to make changes without notice. Actual home may be built as shown or reversed as dictated by engineered site plan. © Copyright 2025, Providence Real Estate Development, LLC.