



Woodbridge
Oak Elevation



Maple Elevation



Poplar Elevation



Spruce Elevation

About

The first floor features a three bedroom, two bath, split floor plan. The spacious owner's suite has it's own sitting area, separate tub and shower and a walk in closet big enough to share. Add in a huge family room which opens to a spacious kitchen with island and this makes for family friendly space at a great value. This home offers an optional garage.

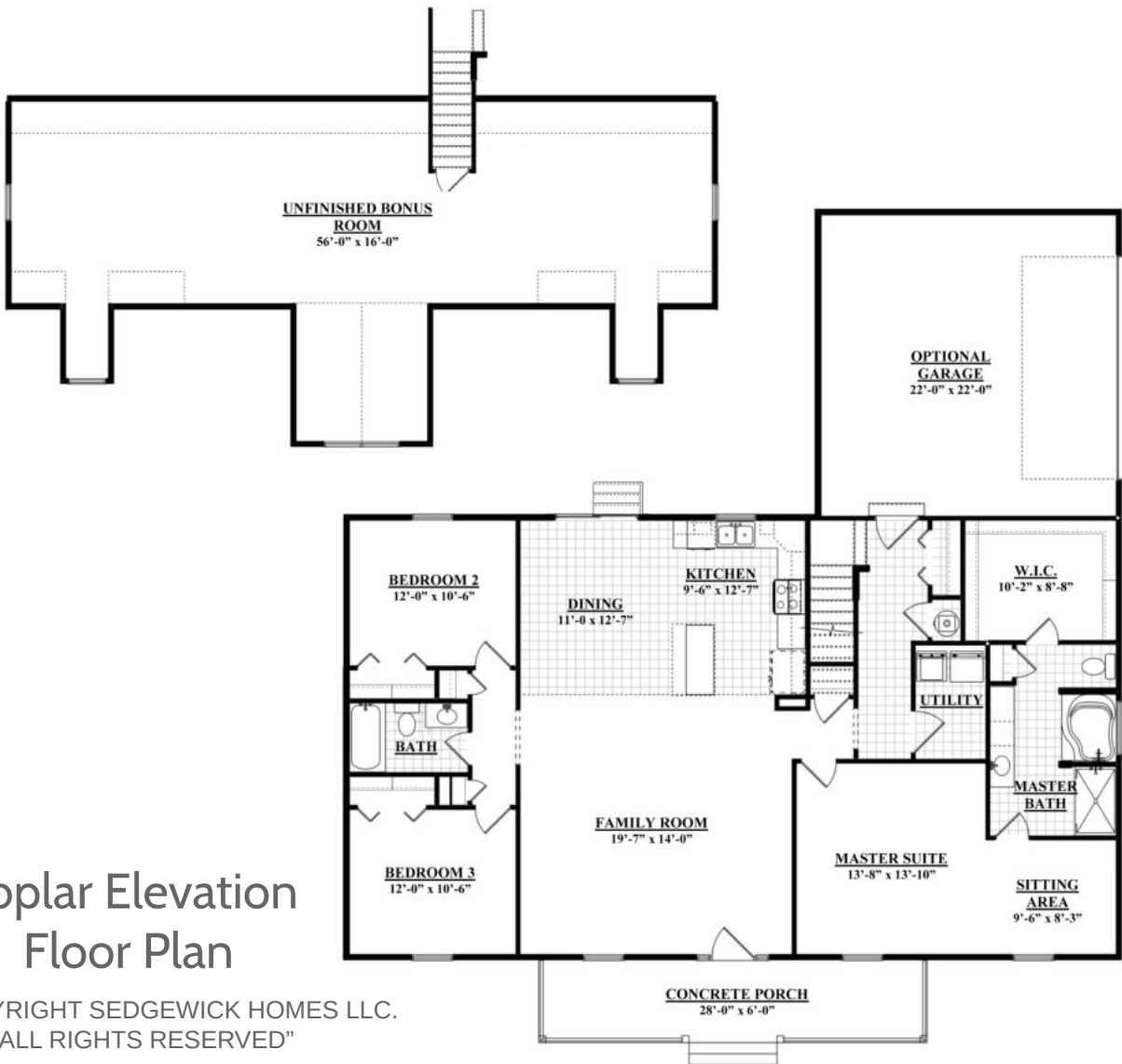
Contact Us:

877.358.9199

www.sedgewickhomes.com



- 1,792 Living Area
- Bedrooms: 3
- Bathrooms: 2
- 1,124 Unfinished Bonus



Poplar Elevation Floor Plan

© "COPYRIGHT SEDGEWICK HOMES LLC.
ALL RIGHTS RESERVED"

Please see sales agent for plan differences.

These drawings are for illustration purposes only. All dimensions are approximate and elevations may reflect optional features and colors. Square footage may vary by elevation.

