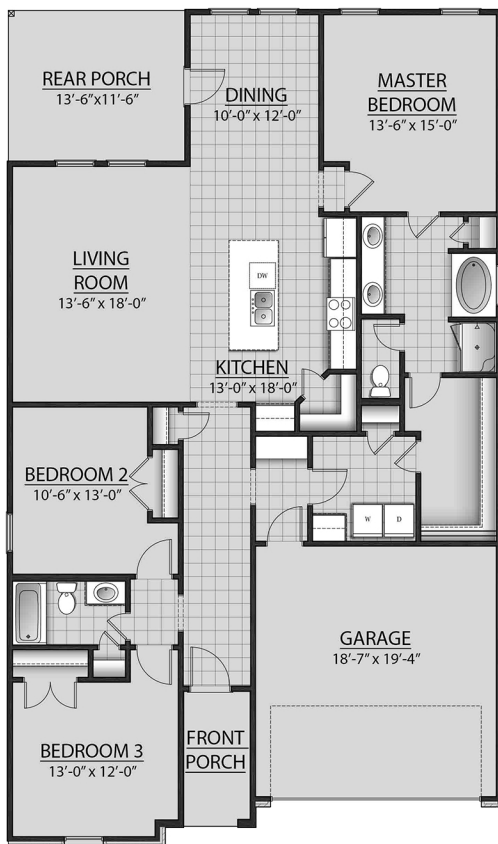


THE TROY G III PLAN



LIVING AREA

1782 Square Feet

TOTAL AREA

2384 Square Feet

FEATURES

- Open Floor Plan
- Three Bedrooms, Two Bathrooms
- Brick & Vinyl Exterior
- Double Master Vanity
- Walk-In Master Closet
- Garden Master Tub
- Separate Master Shower
- Walk-In Pantry
- Recessed Can Lighting in Kitchen
- Two Car Garage
- Covered Rear Porch



Floor plans and elevations are subject to change without notice. Elevations and renderings are artistic conceptions and may not accurately depict home styles. Windows, doors and plan configurations are subject to change per elevation. Information contained in this flyer is subject to errors, omissions, changes, withdrawals and prior sales without notice.