



FARMHOUSE  
COLOR SCHEME 2



COTTAGE  
COLOR SCHEME 4



1,8887 SQ FT



3 - 4 BEDROOMS



2.5 BATHROOMS



2-CAR GARAGE



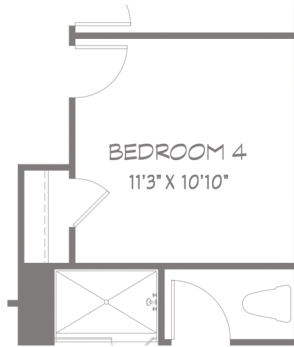
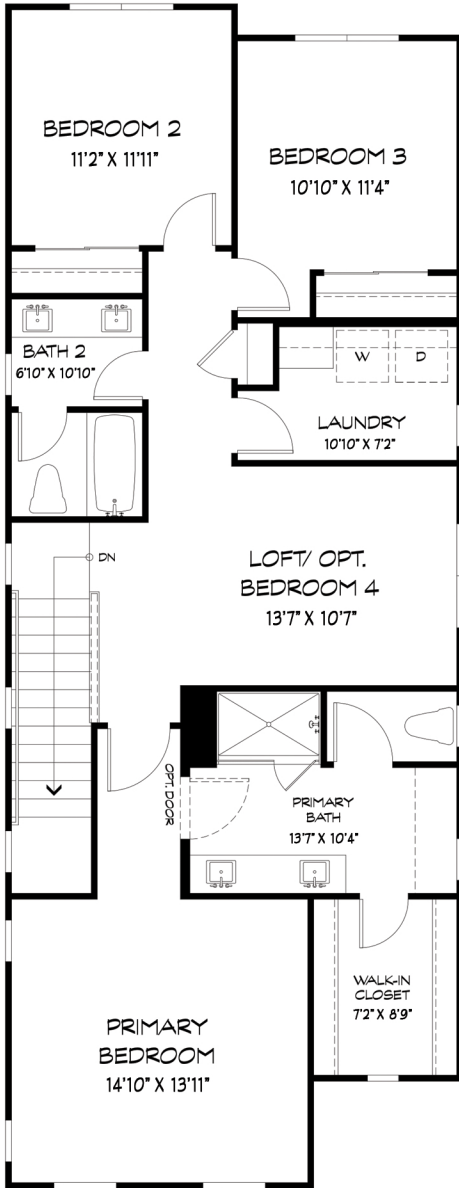
TWO-STORIES

**PLAN 3** offers 1,887 sq. ft. of flexible two-story living with Farmhouse and Cottage elevations. This thoughtfully designed home features 3 bedrooms with an optional 4th in place of the upstairs loft. The main level includes a spacious great room, open dining area, and a modern kitchen with a large island, plus a powder bath and attached 2-car garage. Upstairs, two secondary bedrooms share a full bath, and the laundry room is just steps from the generous primary suite with a walk-in closet and dual vanities. Premium finishes complete this stylish home in the heart of Windsor.



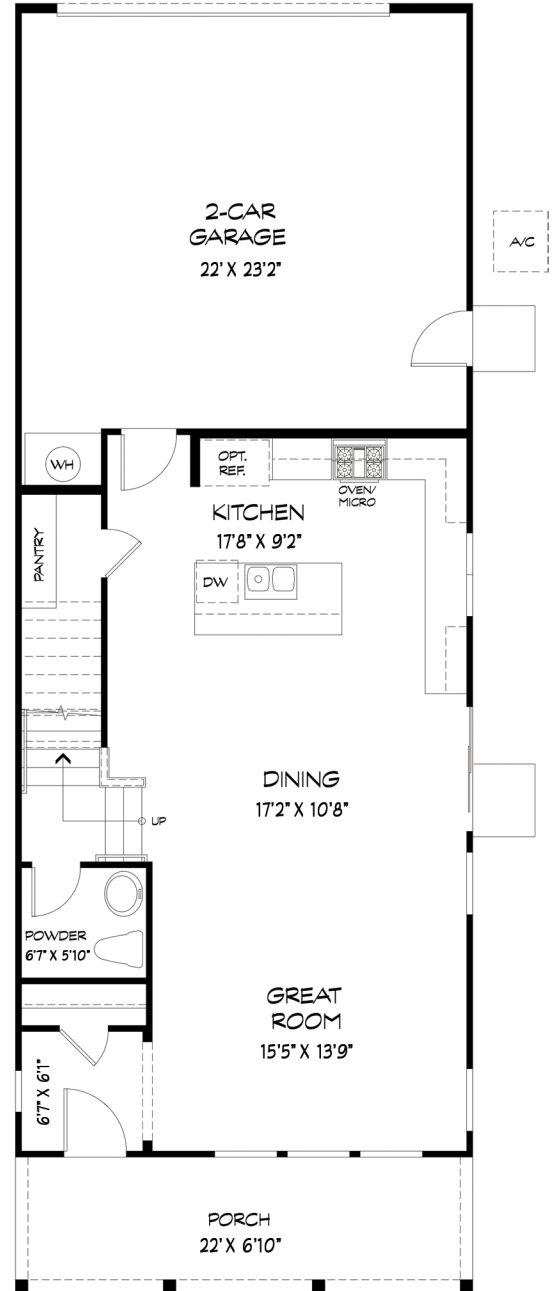
SCAN WITH YOUR CAMERA  
TO LEARN MORE!

## SECOND FLOOR



OPTIONAL  
BEDROOM 4  
IN LIEU OF LOFT

## FIRST FLOOR



1,887 SQ FT



3 - 4 BEDROOMS



2.5 BATHROOMS



2-CAR GARAGE



TWO-STORIES

# OLD REDWOOD VILLAGE



**HOMESITE 26**

**PLAN 3 COTTAGE | SCHEME 6**

**114 Tracy Drive, Windsor, CA**

## **INCLUDED FEATURES**



In our commitment to quality and excellence, Ryder Homes reserves the right to make modifications to the materials, specifications, plans, designs, prices and premiums, options programs or any other sales program, without notice or obligation. All renderings, floor plans and maps are artist's conception and may not depict actual buildings, fencing, walks, driveways or landscaping. Real estate brokerage services provided by Ryder Homes Realty, Inc. DRE# 01968425 | All Rights Reserved © 2026 Ryder Homes.

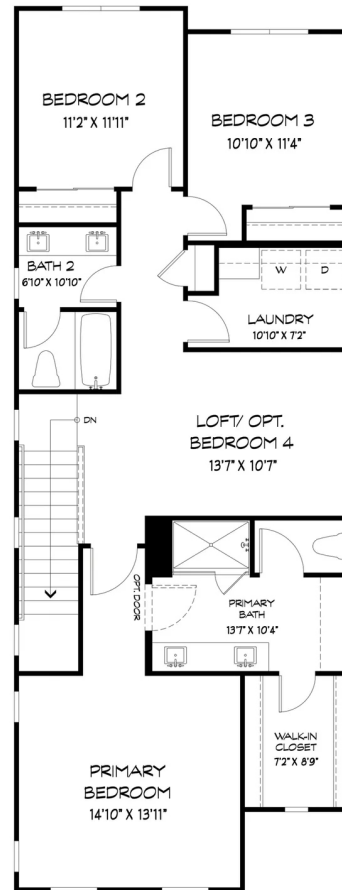




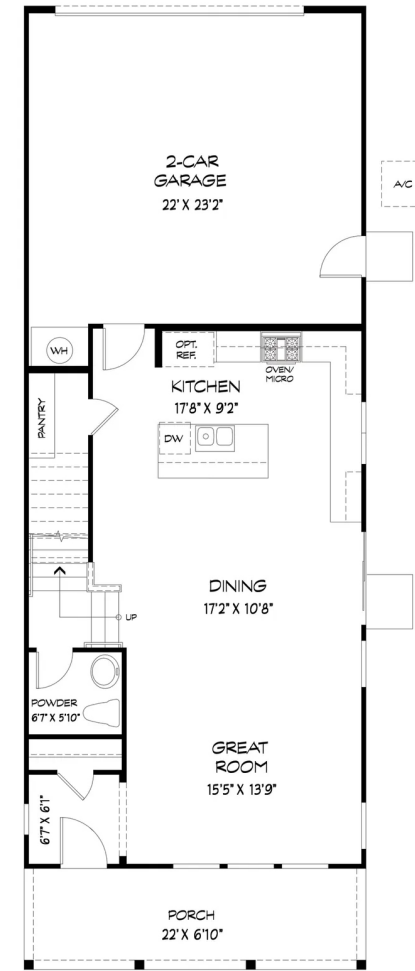
# ARCHITECTURAL FLOOR PLAN

- 1 1,887 SQ. FT TWO STORY FLOORPLAN
- 2 OPEN CONCEPT GREAT ROOM DESIGN
- 3 DEDICATED DINING AREA
- 4 MODERN KITCHEN WITH LARGE CENTER ISLAND
- 5 MAIN LEVEL POWDER BATH
- 6 ATTACHED 2-CAR GARAGE
- 7 UPSTAIRS LOFT FOR FLEXIBLE USE
- 8 TWO SECONDARY BEDROOMS UPSTAIRS
- 9 FULL BATH FOR SECONDARY BEDROOMS
- 10 PRIVATE PRIMARY SUITE
- 11 WALK-IN CLOSET IN PRIMARY SUITE
- 12 DUAL VANITIES IN PRIMARY BATH
- 13 FUNCTIONAL LAYOUT WITH FLEXIBLE LIVING OPTIONS

SECOND FLOOR



FIRST FLOOR



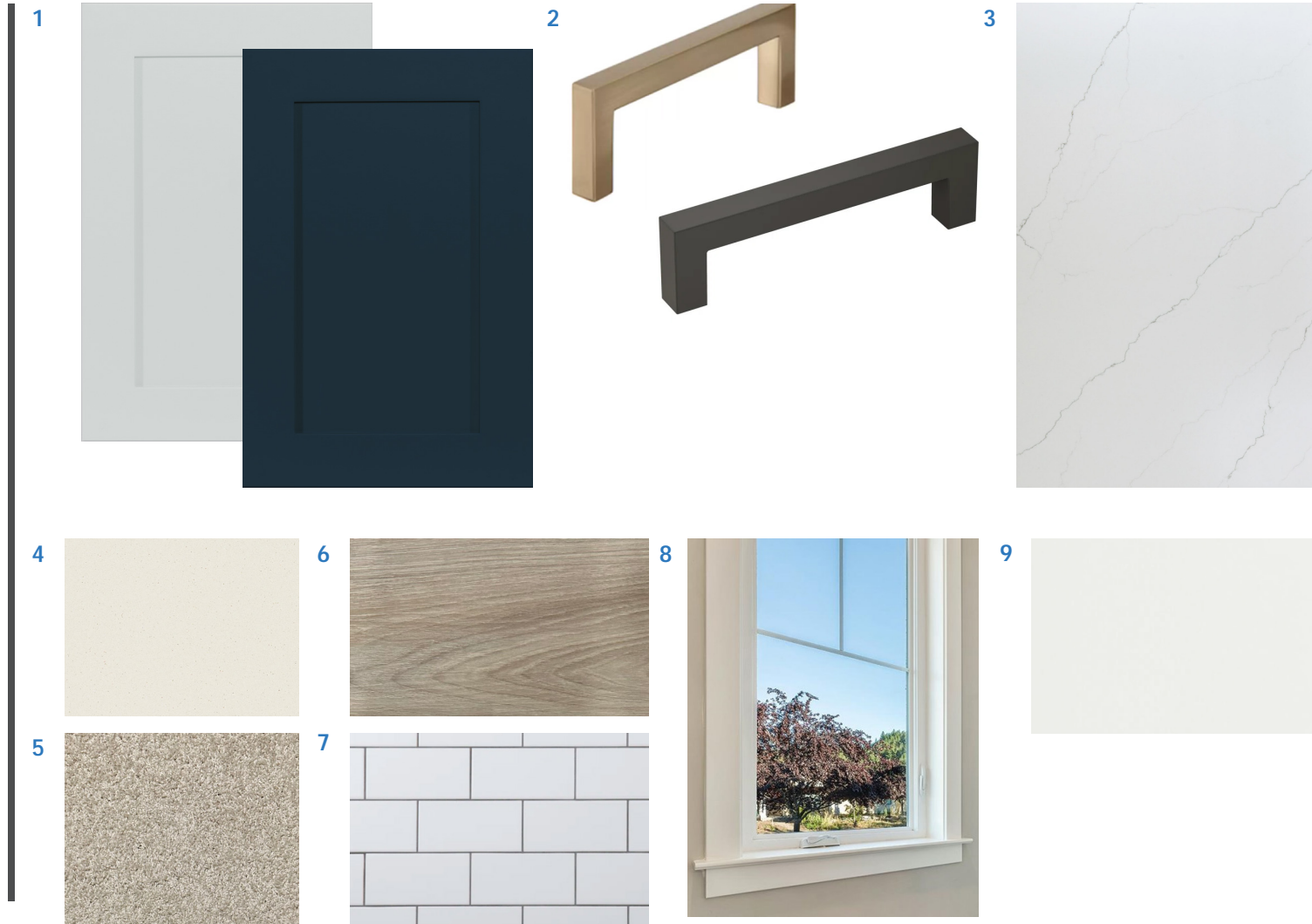
# APPLIANCES

- 1 OVEN & RANGE  
GE 30" Free-Standing Electric  
Convection Range
- 2 MICROWAVE  
GE Over-The-Range Microwave
- 3 DISHWASHER  
GE Top Control With SS Interi-  
or Dishwasher Energy Star



# INTERIOR FINISHES

- 1 CABINETS SPLIT FINISH  
Craftsman 3" Shaker Doors  
Winter White & Denim
- 2 CABINET HARDWARE  
Modern Square Pull  
Rose Gold Kitchen  
Matte Black Throughout
- 3 KITCHEN & ISLAND COUNTER  
MS International  
Calcatta Miraggio
- 4 BATHS & LAUNDRY COUNTER  
Daltile ONE Quartz  
Simply White
- 5 CARPET FLOORING  
Mohawk Reactive Collection  
Linen Lace
- 6 LVP FLOORING  
Hartco 7"x48" Vinyl Planks  
Timeless Ecru
- 7 BATHROOM TILE  
Daltile Color Wheel  
3"x6" Straight Set Arctic White
- 8 WINDOW TRIM  
Stool & Apron On All Windows
- 9 INTERIOR PAINT  
Whitest White



# FRAMING & DOORS

- 1 FRONT ENTRY DOOR  
Therma Tru Smooth Star Fiber-glass 1-Panel Shaker With Full Lite Satin Etched Glass
- 2 GARAGE SERVICE DOOR  
Fiberglass S100 Self Closing Fire Door
- 3 FRONT DOOR HARDWARE  
Kwikset San Clemente Handset With Halifax Square Interior Handle
- 4 SMART LOCK  
Kwikset Electronic 916 Smart Code Contemporary Deadbolt With Zigbee Technology
- 5 INTERIOR DOORS  
Masonite Lincoln Park
- 6 INTERIOR DOOR HARDWARE  
Schlage Latitude Lever Matte Black
- 7 GARAGE DOOR  
Wayne Dalton Classic Steel Garage Door
- 8 GARAGE DOOR OPENER  
Liftmaster Wall Mount Elite



# BATHROOM FINISHES

- 1 PRIMARY SHOWER  
Aspirations Shower Pan With  
Daltile Color Wheel Ceramic  
Tile
- 2 SECONDARY BATHROOM  
Princeton Pro Bath/Shower  
With Subway Tile Finish
- 3 BATHROOM SINKS  
Studio Rectangle White Under-  
mount
- 4 POWDER BATH SINK  
Evolution Pedestal Sink
- 5 TOILETS  
Colony Two-Piece Elongated  
Chair Height Toilet



# HARDWARE FIXTURE PACKAGE

- 1 KITCHEN SINK  
American Standard Portsmouth
- 2 KITCHEN FAUCET  
MOEN Sleek Pull Down  
Brushed Gold
- 3 BATHROOM SINK FAUCETS  
MOEN Genta Matte Black One  
Handle High Arc Faucet
- 4 BATHROOM SHOWER FAUCET  
SHOWER ONLY  
MOEN Genta Matte Black  
Posi-Temp
- 5 BATHROOM SHOWER FAUCET  
SHOWER/TUB  
MOEN Genta Matte Black  
Posi-Temp Tub/Shower
- 6 TOILET PAPER HOLDER  
MOEN Genta Matte Black  
Pivoting Toilet Paper Holder
- 7 TOWEL BARS  
MOEN Genta Matte Black  
Towel Bar
- 8 ROBE HOOK  
MOEN Genta Matte Black  
Single Robe Hook



# STANDARD PLUMBING FEATURES

- 1 WATER HEATER  
50 Gallon Rheem Heat Pump  
Electric Water Heater
- 2 GARBAGE DISPOSAL  
MOEN GX Series Garbage Dis-  
posal & Stainless Air Switch
- 3 HOSE BIB FAUCET  
Woodford Model 19  
Anti-Freeze Faucet

