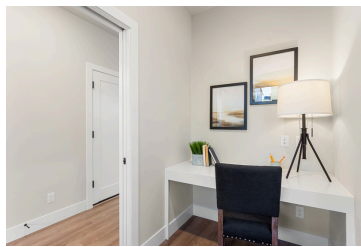


\$35,000
CLOSING
COST
AND/OR
BUYDOWN
INCENTIVE



OFFERED AT
\$689,900

Wilson
RX 516 PNWM

LOCATION

8477 SE Barlow St
Hillsboro, OR 97123
Lot 1433

Property Features



2,475 Sq. Ft.



4 Bedrooms



2.5 Bathrooms



2 Car Garage

- Loft on upper level
- Spacious living room and kitchen
- Walk-in pantry and lots of cabinet space
- Whirlpool appliances
- Standard driveway

StoneBridgeHomesNW.com

503-221-8444

TeamTravis@stonebridge-realty.com

Reed's Crossing
Wilson - RX 516 PNWM

