

DESIGN

LAREDO - 6413



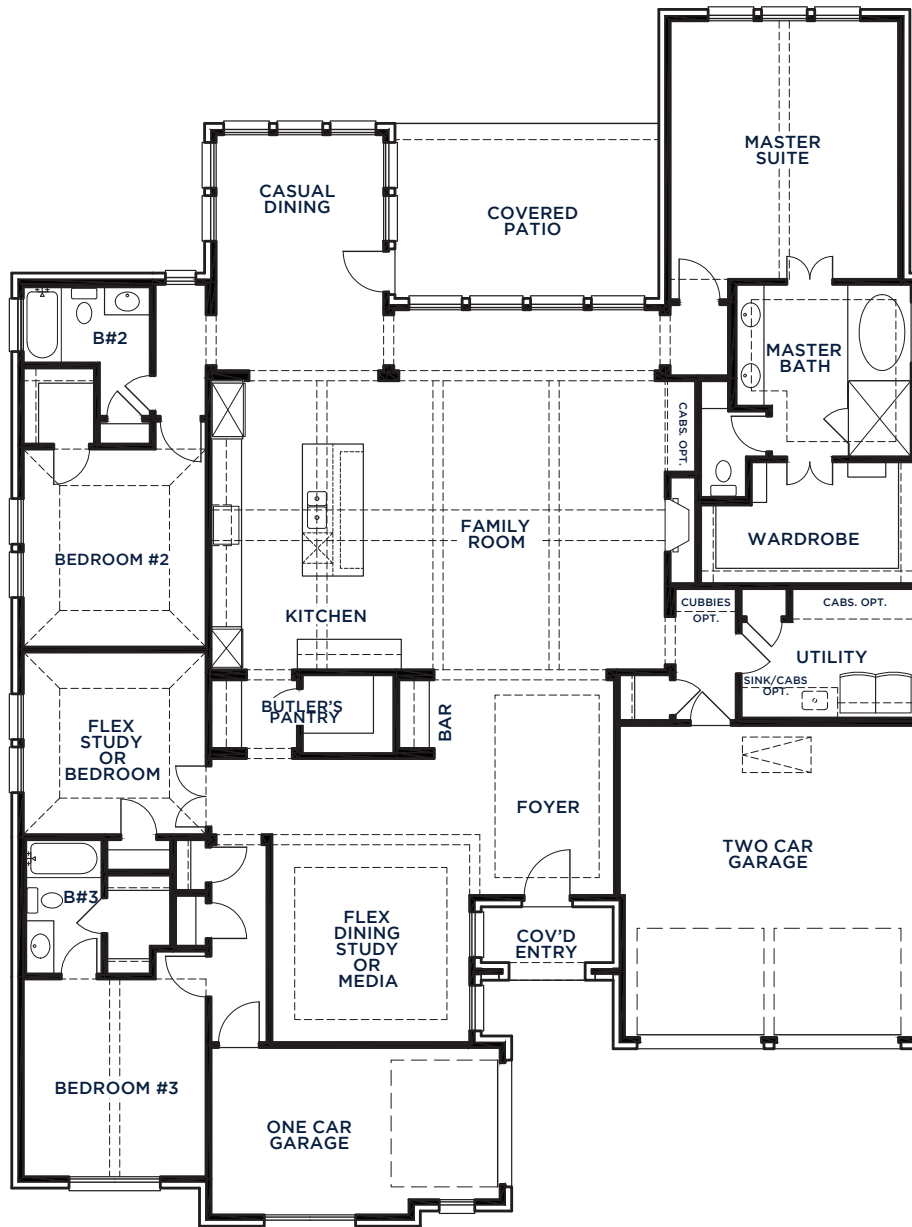
A



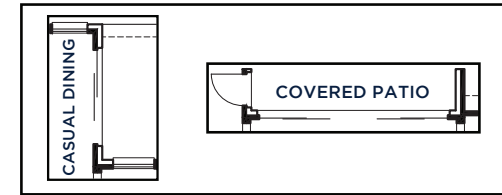
B



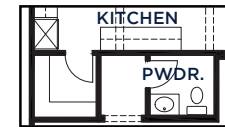
All Product including Architectural Designs, ©2000-2023, Shaddock Homes, LTD., All rights reserved. There may be existing or future design changes made in the floorplans, building products, methods, square footage, or designs used in our homes that are not reflected in our information, sales center or in our models. The materials, designs, square footages, features, and amenities shown are based upon current development plans, which are subject to change without notice. No guarantee is made that the designs, square footages, materials, features, and amenities depicted by artist's renderings or otherwise described will be built, or if built, will be of the same type, size or nature as depicted or described. All stone elevations, metal roofs, cast stone door and window headers and solid sawn cedar posts are optional, but available via change order. Front doors will match the specification sheet or chosen door upgrade. Prices and terms subject to change without notice. **REVISION DATE: 4.27.2017**



FIRST FLOOR



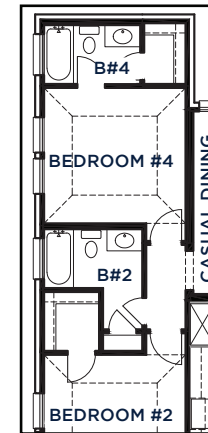
SLIDING GLASS DOOR OPTION AT CASUAL DINING OR FAMILY ROOM



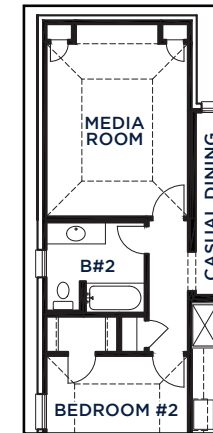
POWDER BATH OPTION *IN LIEU OF BUTLER'S PANTRY



SINGLE GARAGE DOOR OPTION



BEDROOM 4 OPTION



MEDIA ROOM OPTION

LAREDO 6413 (4.27.17)

	S.FT
First Floor	3046
Total Living Area	3046
3 Car Garage	661
Covered Patio	199
Covered Porch	42
Total Area	3948

Options

Bedroom 4	226
Media Room	226

SHADDOCK HOMES