

# The Glenwood Craftsman

## Ready Home for Sale




**\$839,900\***


**April Occupancy**

Cedar Ridge (Lot 8)


4957 113th Street

Pleasant Prairie, WI 53158

 4 Bedrooms

 3.5 Bathrooms

 2,800 SF

 3 Car Garage

### Directions:

I-94 to 104th Street/Hwy 165. East on 104th Street/Hwy 165. At the Roundabout, take the 1st exit onto Springbrook Rd. Turn left onto 47th Ave. Right onto 113th Street into the neighborhood.

\*Price subject to change without notice.



### KITCHEN FEATURES

Designer Kitchen with painted cabinets with crown molding, soft close doors/drawers & roll trays

Quartz countertops, tile backsplash, island w/ painted cabinets & flush snack bar

Butler's pantry w/ quartz countertop

GE® kitchen appliance package w/built-in microwave, dishwasher, slide-in gas range, chimney style hood & built-in look French door refrigerator in slate finish

### MAIN LEVEL FEATURES

16'x12' sunroom w/ large transom windows

Luxury vinyl plank flooring in foyer, office, great room, kitchen, nook, sunroom, butler's pantry, laundry, mudroom, powder room, bath 3, and bath 2

Gas fireplace w/ stacked stone surround & boxed mantel w/ returns

Double swing glass doors in office

Separate laundry & mudroom

Built-in lockers in drop zone

Laundry room w/ GE washer & dryer, cabinets & folding table

2' side bump at laundry/mudroom

### MASTER SUITE FEATURES

Box up ceiling & large walk-in closet w/ melamine shelving

Double bowl vanity w/ added drawer storage in between  
3.5'x6' tiled shower w/frameless glass door, wall to wall tiled niche, & tiled bench

Tile flooring

Separate commode room

### ADDITIONAL FEATURES

Jack & Jill bathroom between bedroom 2 & 3

Princess suite w/ separate bathroom

4 1/4" base & 3 1/4" casing

Insulated overhead garage door & belt-driven ultra quiet garage door opener

Solid core doors

Basement bathroom plumbing rough in

Egress windows

9' foundation

Pella® windows

Dura Supreme® Cabinets

Moen® Faucets & Kohler® Toilets

Maxim® Light Fixtures

Smooth drywall finish

2x6 Construction

Focus on Energy Certified

Builder Warranty Included

Floor Plan on Other Side →



### ASK RYAN!

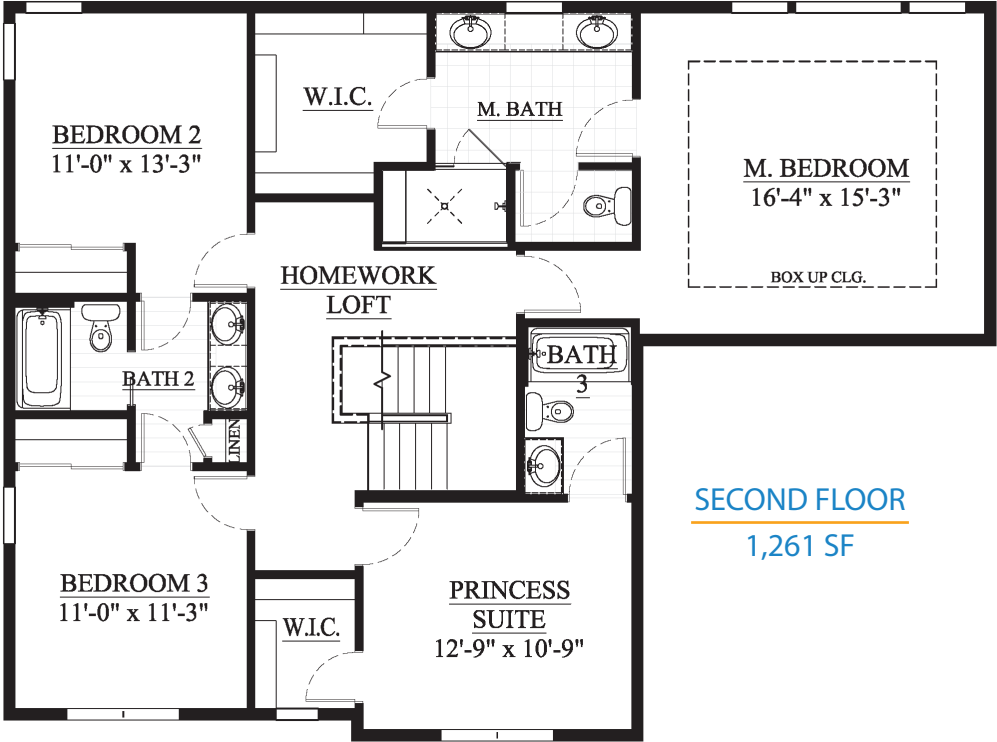
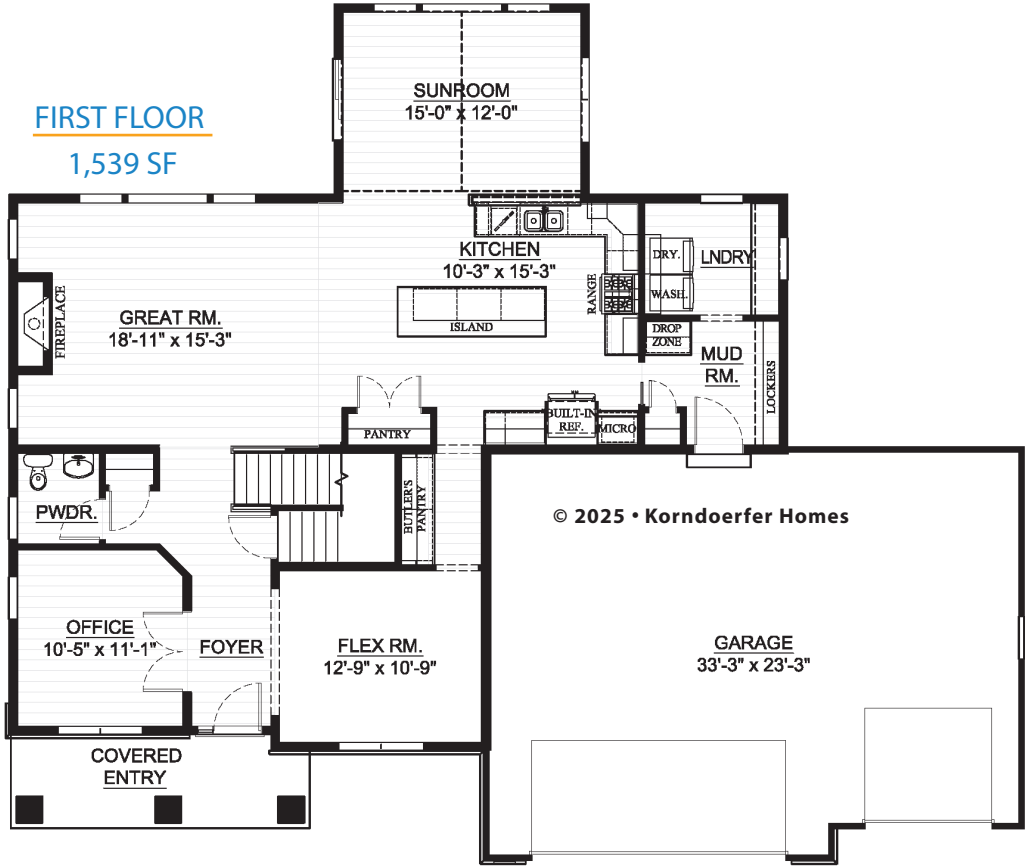
Online Sales Consultant

262-884-9551

[sales@korndoerferhomes.com](mailto:sales@korndoerferhomes.com)



# The Glenwood Craftsman Floor Plan



**ASK RYAN!**

Online Sales Consultant  
262-884-9551  
sales@korndorferhomes.com

**KORNDORFER**  
HOMES  
KORNDORFERHOMES.COM

