

# BRUNSWICK A2

TWO-STORY | 5 BEDROOMS | 4 BATHROOMS | 3,429 SQ FT | ELEVATION A2



2-CAR FRONT ENTRY GARAGE



3-CAR FRONT ENTRY GARAGE



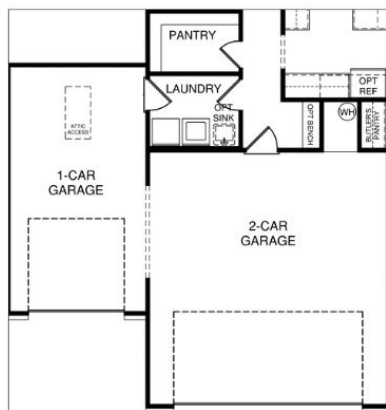
2-CAR SIDE ENTRY GARAGE



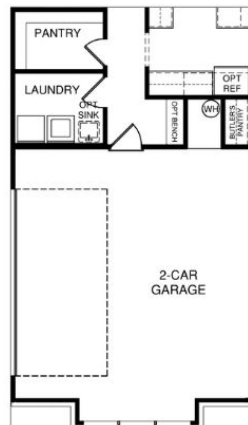
3-CAR SIDE ENTRY GARAGE



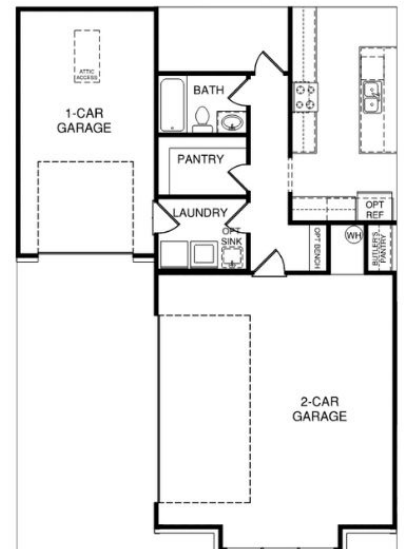
2-CAR FRONT ENTRY GARAGE



3-CAR FRONT ENTRY GARAGE



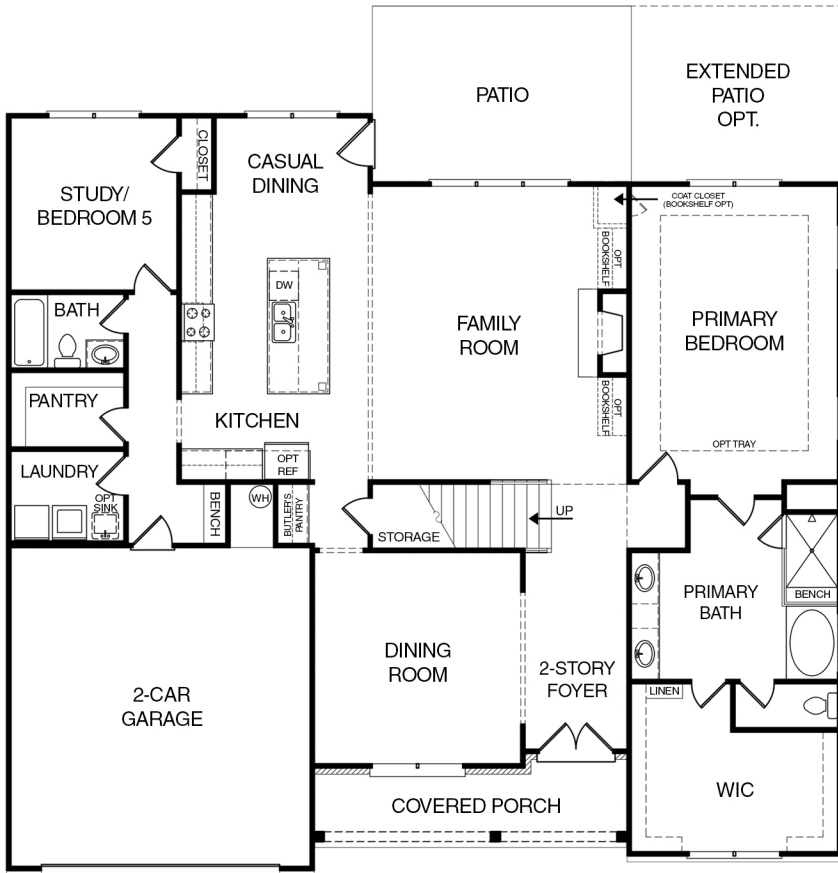
2-CAR SIDE ENTRY GARAGE



3-CAR SIDE ENTRY GARAGE

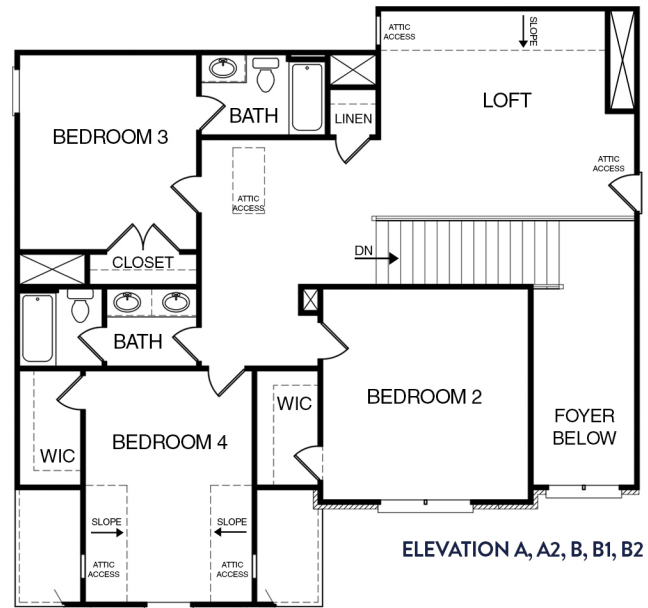
RANCH | 4 BEDROOMS | 4.5 BATHROOMS | 2,945 SQ FT | FLOOR PLAN

- FIRST FLOOR -



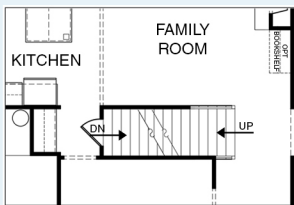
ELEVATION A, A1, B, B1, B2, B3

- SECOND FLOOR -

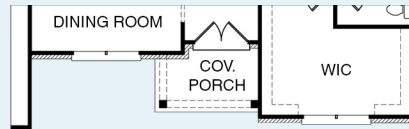


ELEVATION A, A2, B, B1, B2

- FIRST FLOOR OPTIONS -



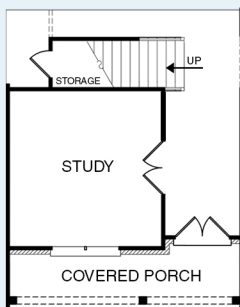
STAIRS TO BASEMENT



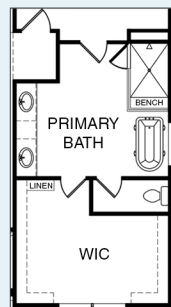
A2 PARTIAL FLOOR PLAN



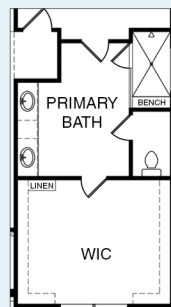
A1, B3 PARTIAL FLOOR PLAN



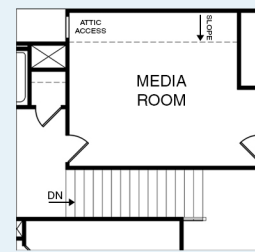
STUDY ILO DINING ROOM



FREESTANDING TUB



ENLARGED SHOWER



MEDIA ROOM ILO LOFT



BED 3 WINDOW CHANGE  
3-CAR SIDE ENTRY GARAGE

- SECOND FLOOR OPTIONS -