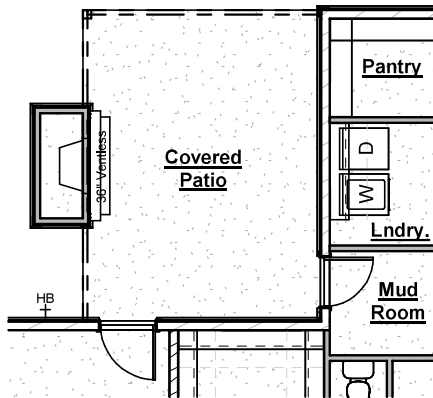


# the FOXGLOVE

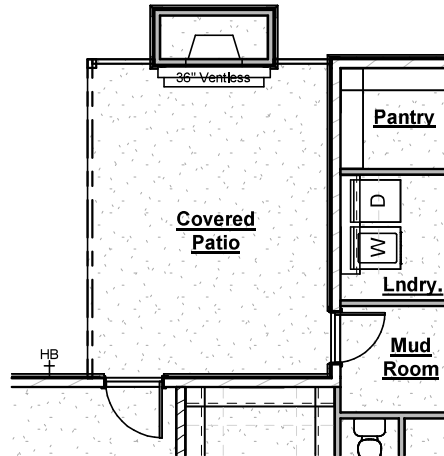
...

## Plan Options



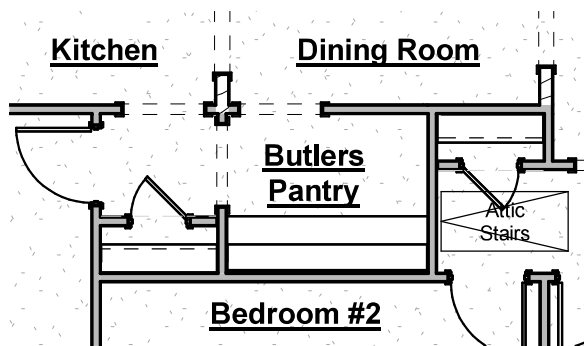
*Outdoor Gas Log Fireplace (Rear Location)*

-Adds outdoor fireplace with siding or brick to match house, cedar beam mantel, firebox, gas logs & electrical outlet above fireplace



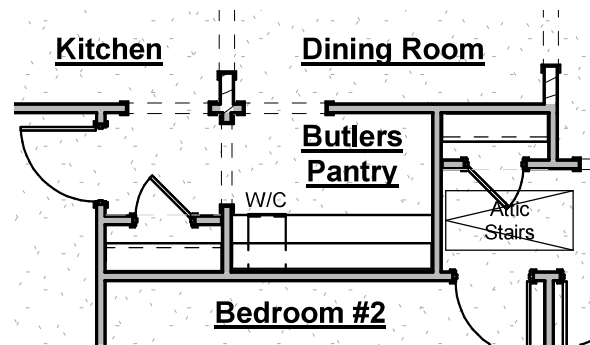
*Outdoor Gas Log Fireplace (Side Location)*

-Adds outdoor fireplace with siding or brick to match house, cedar beam mantel, firebox, gas logs & electrical outlet above fireplace



*Butler's Pantry*

-Adds approximately 85" of upper & lower cabinets, countertops & backsplash

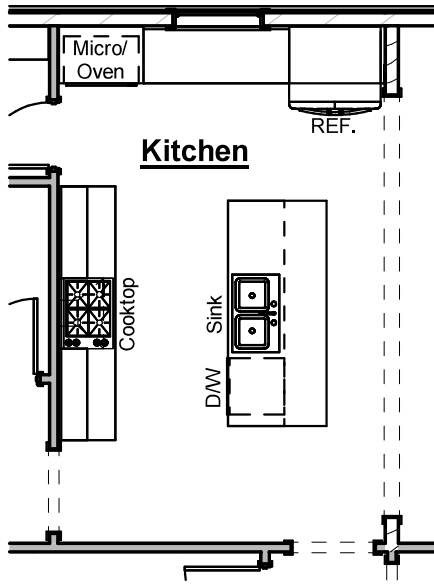


*Butler's Pantry  
with Beverage Cooler*

-Eliminates cabinet base to allow for 24" beverage cooler & includes electrical outlet  
-Beverage cooler is not included and may be selected at design

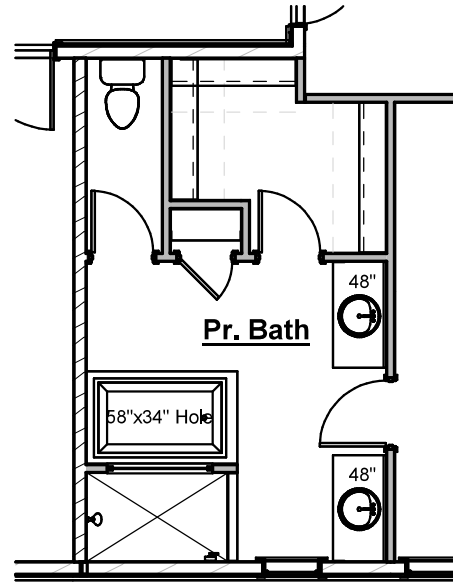


HARRIS DOYLE  
HOMES



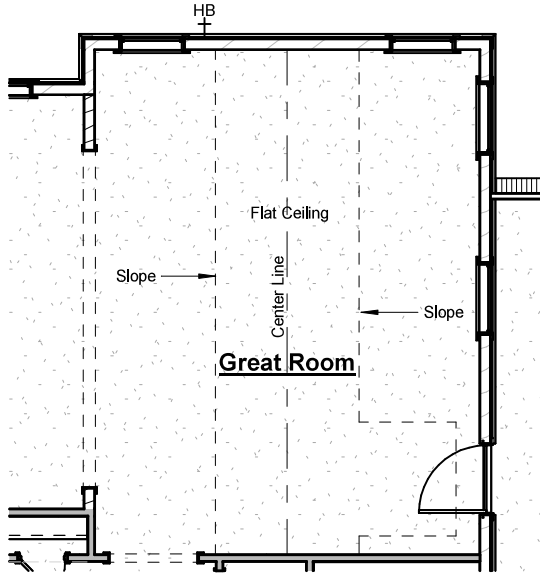
*Chef's Kitchen with Double Oven*

-Includes Frigidaire Gallery cooktop, wood hood, 2 wall ovens, microwave in island & dishwasher

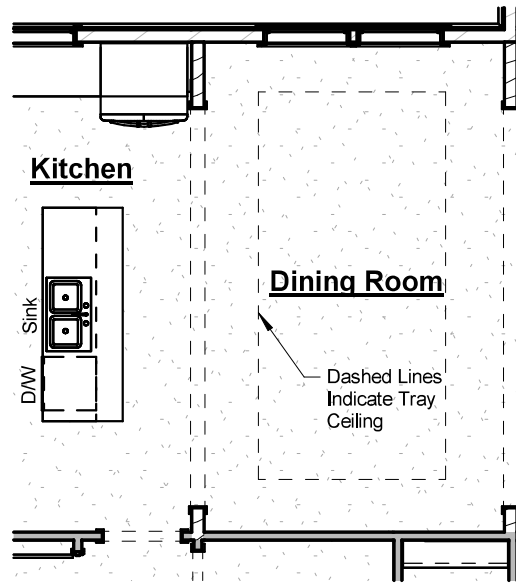


*Primary Bathroom Tub*

-Adds drop in tub with tile surround

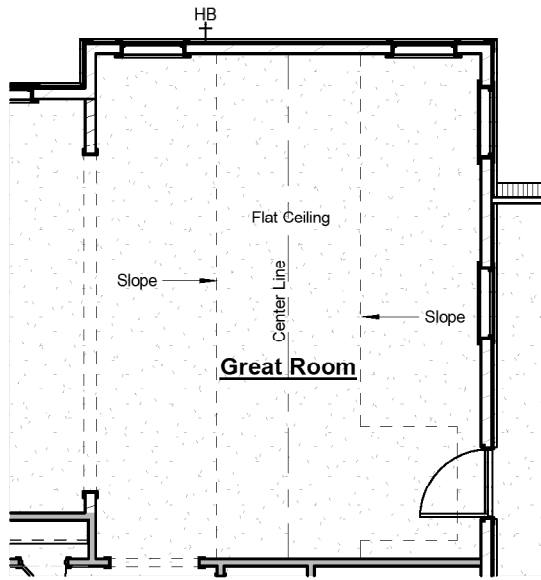


*Great Room Vaulted Ceiling*

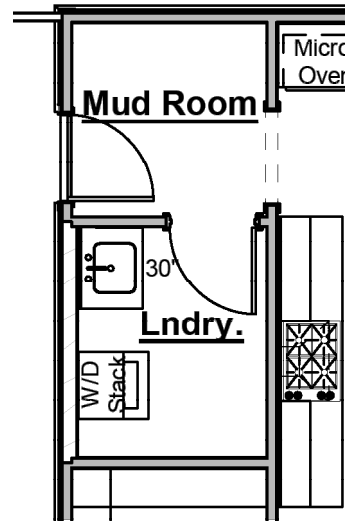


*Dining Room Tray Ceiling*





*Great Room Vaulted Ceiling*



*Laundry Room Sink*

- Includes stainless sink with 30" base cabinet, cabinet hardware and countertop
- Cabinet base and countertop can be replaced with a freestanding utility sink
- Does not include stacking kit for washer & dryer

### *Other Options*

- Guest Bath Syn-Iron Tub Shower with Tile Surround
- Pedestal Tubs
- 8' Interior Doors on Main Level

\*Certain structural options may not be available due to lot restrictions and/or selection of other options. Prices subject to change without notice.



**HARRIS DOYLE**  
HOMES



**LIFE WELL CRAFTED**



HARRISDOYLE.COM



facebook.com/harrisdoylehomes



@harrisdoylehomes  
#harrisdoyle