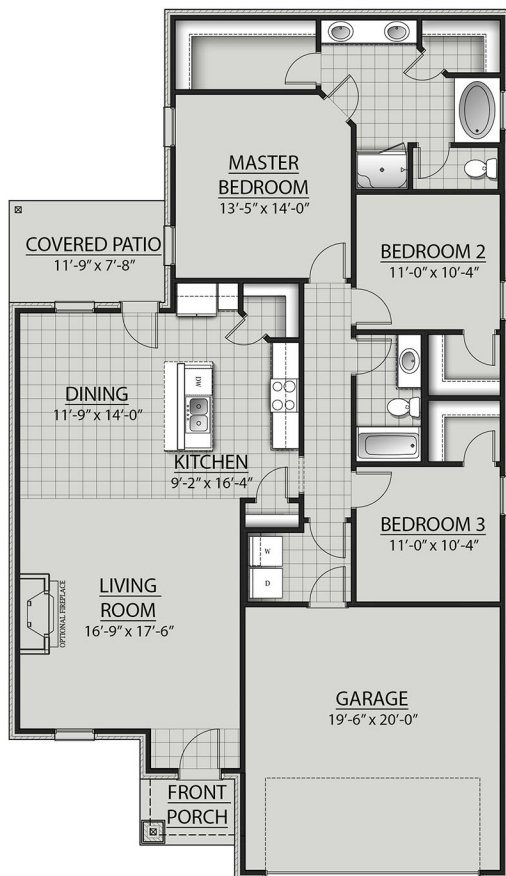


# THE DOGWOOD F IV PLAN



## Living Area

1660 Square Feet

## Total Area

2212 Square Feet

## Features

- Open Floor Plan
- Three Bedrooms, Two Full Bathrooms
- Brick & Stone Exterior
- Double Master Vanity
- Walk-In Closets in all Bedrooms, Two included in Master
- Garden Master Tub
- Separate Master Shower
- Walk-In Pantry
- Recessed Can Lighting in Kitchen
- Two Car Garage
- Covered Rear Patio



Floor plans and elevations are subject to change without notice. Elevations and renderings are artistic conceptions and may not accurately depict home styles. Characteristics, including but not limited to windows, doors, plan configurations and orientations are subject to change per home site. Information contained in this flyer is subject to errors, omissions, changes, withdrawals and prior sales without notice.