

4 BEDROOMS
2.5 BATHS
2 CAR GARAGE

9' CEILING ON FIRST FLOOR
OPEN CONCEPT FLOOR PLAN
FORMAL DINING ROOM
BASEMENT

The
CHARLESTON



Traditional Elevation



Traditional Elevation w/ Opt Dormers and Full Front Porch

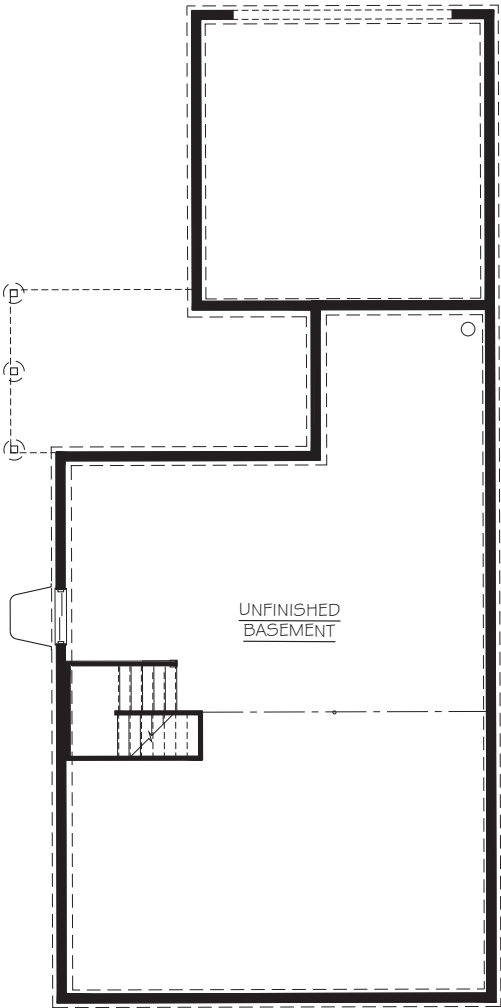


Hip Elevation

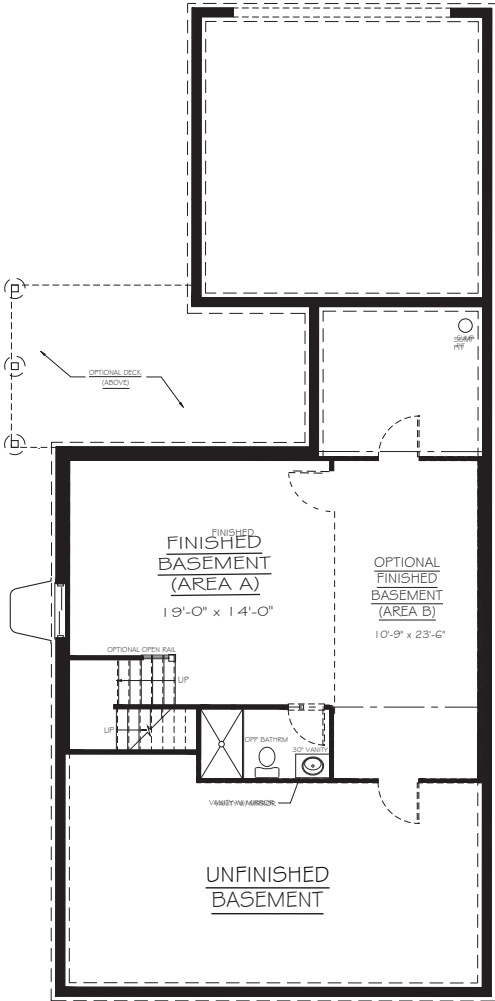


Hip Elevation w/ Opt Full Front Porch

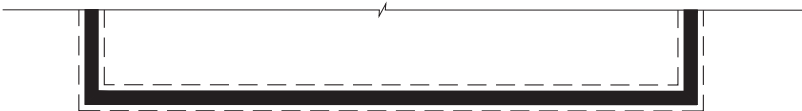
BASEMENT PLAN - STANDARD



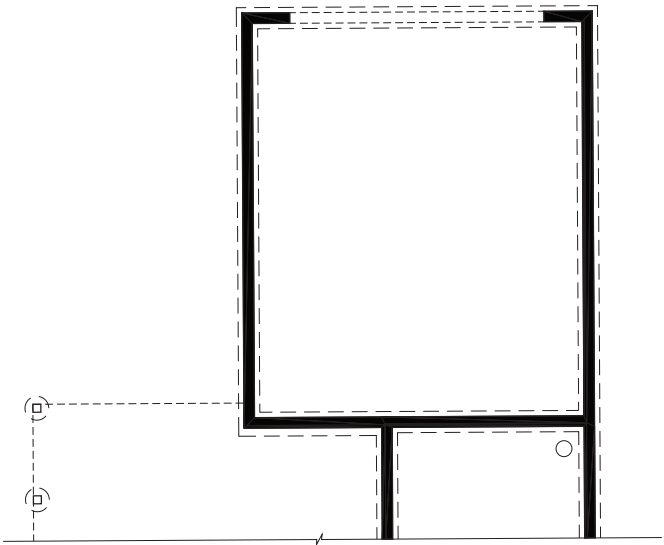
BASEMENT PLAN - OPTIONAL
FINISHED BASEMENT



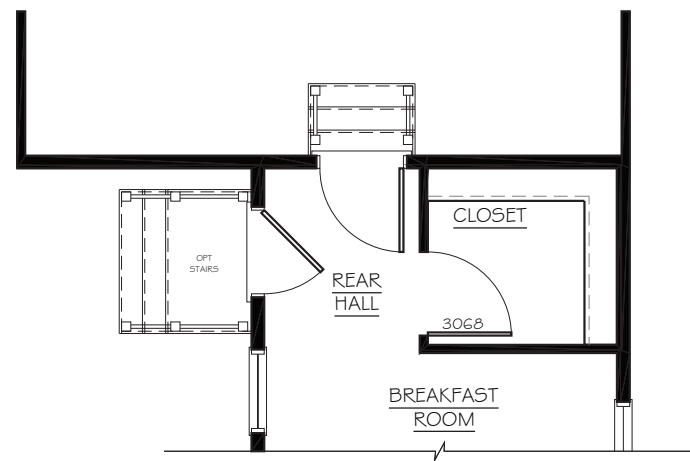
FOUNDATION PLAN - OPTIONAL PORCH



BASEMENT PLAN - OPTIONAL
EXTENDED GARAGE



FIRST FLOOR - ALT PLAN (VIGNETTE)



Floor plan of Unit 501. The plan includes a large **BEDROOM #5** measuring 12'-0" x 11'-0", a **BATHRM** (bathroom) containing a bathtub, toilet, and sink, and a **FOYER** area. A closet labeled **CL** is located near the bathroom. The unit features a balcony with a railing, a staircase, and a door leading to the Foyer. The plan also shows a window in the bedroom and a door leading to the bathroom.

Cottage 1
1200 sq. ft.

Bedrooms:

- BEDROOM #2:** 11'-2" x 13'-1"
- BEDROOM #3:** 12'-2" x 12'-7"
- BEDROOM #4:** 12'-2" x 11'-6"
- PRIMARY BEDROOM:** 12'-2" x 16'-0"

Bathrooms:

- PRIMARY BATH:** Includes a bathtub and two sinks.
- HALL BATH:** Includes two sinks and a toilet.

Hall and Closets:

- HALL:** Central hallway with a linen closet (LIN).
- CLOSETS (CL):** Multiple closets throughout the plan, including a large closet in the Primary Bedroom.
- WIC:** Walk-in closet in the Primary Bedroom.

Optional Features:

- OPT. WINDOW:** Indicated at the top and bottom of the plan.
- TRANSOM AT SIDEYARD:** Indicated at the bottom of the plan.
- OPTIONAL WINDOW @ COTTAGES STANDARD. TRANSOM @ SIDEYARDS:** Indicated at the bottom of the plan.
- OPTIONAL TRANSOM @ COTTAGES TRANSOME @ SIDEYARDS:** Indicated at the bottom of the plan.

