

DESIGN

ALBANY - 4469



A



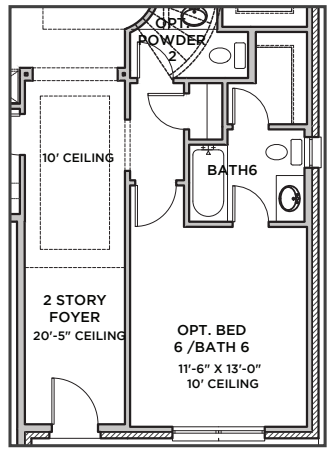
B



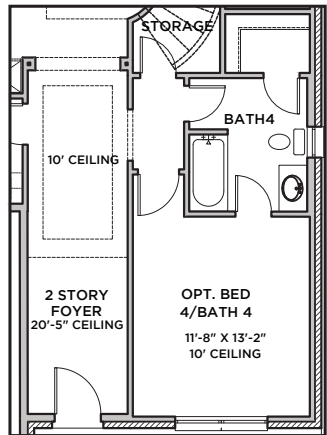
C



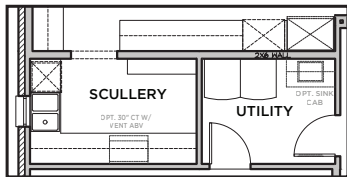
All Product including Architectural Designs, ©2000-2026, Shaddock Homes, LTD., All rights reserved. There may be existing or future design changes made in the floorplans, building products, methods, square footage or designs used in our homes that are not reflected in our information, sales center or in our models. The materials, designs, square footages, features and amenities shown are based upon current development plans, which are subject to change without notice. No guarantee is made that the designs, square footages, materials, features and amenities depicted by artist's renderings or otherwise described will be built, or if built, will be of the same type, size or nature as depicted or described. All stone elevations, metal roofs, cast stone door and window headers and solid sawn cedar posts are optional, but available via change order. Front doors will match the specification sheet or chosen door upgrade. Prices and terms subject to change without notice. REVISION DATE: 12.29.2025



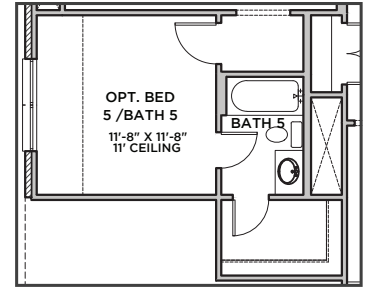
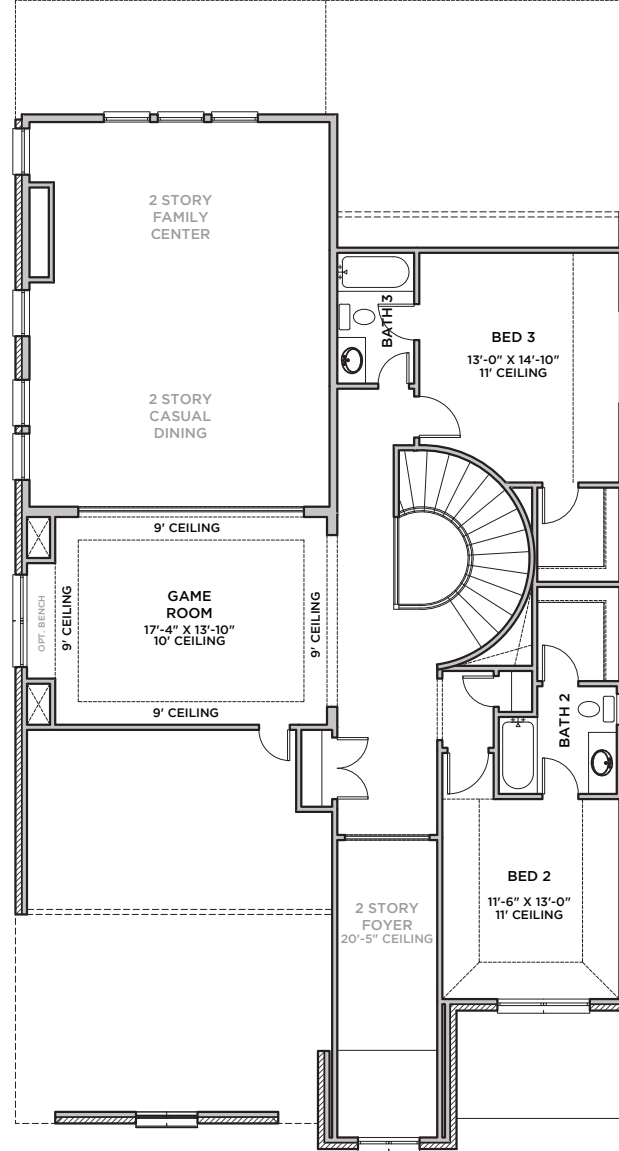
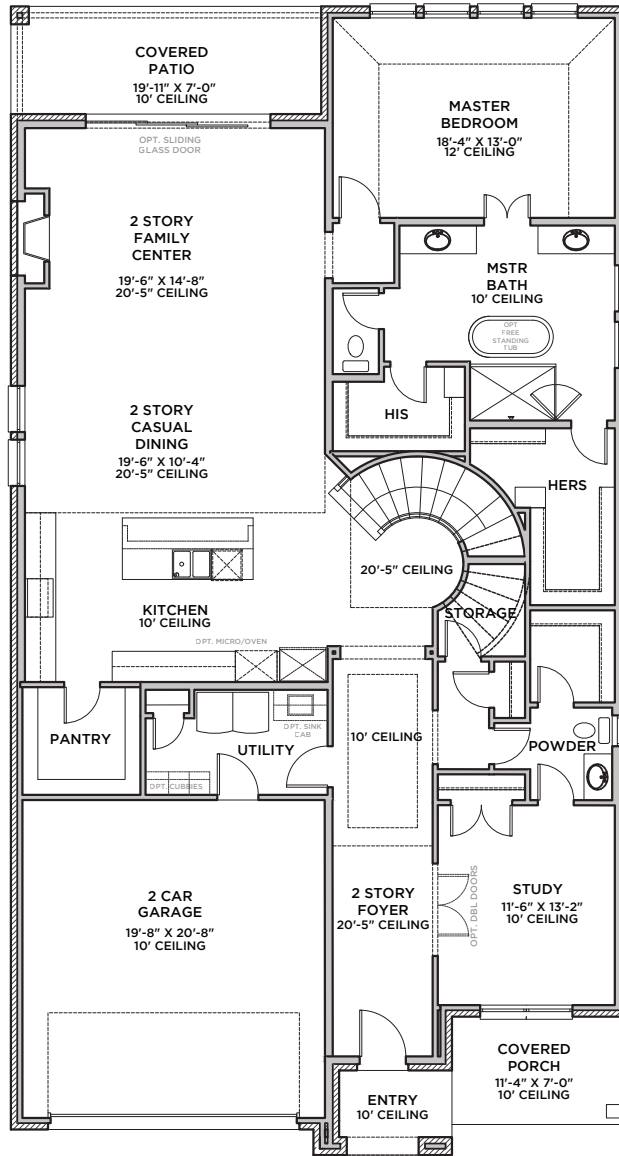
BED 6 BATH 6 W/
POWDER OPTION



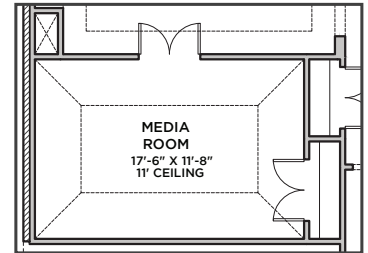
BED 4 BATH 4 OPTION



SCULLERY IN LIEU OF PANTRY



BED 5 & BATH 5 OPTION



MEDIA CENTER OPTION

ALBANY 4469 (12.29.25)

	S.FT
First Floor	2233
Second Floor	1120
Total Living Area	3353
Garage	444
Covered Porch	149
Covered Patio	141
Total Area	4087

Options	
Bed 5/Bath 5	280
Media	235

SHADDOCK HOMES