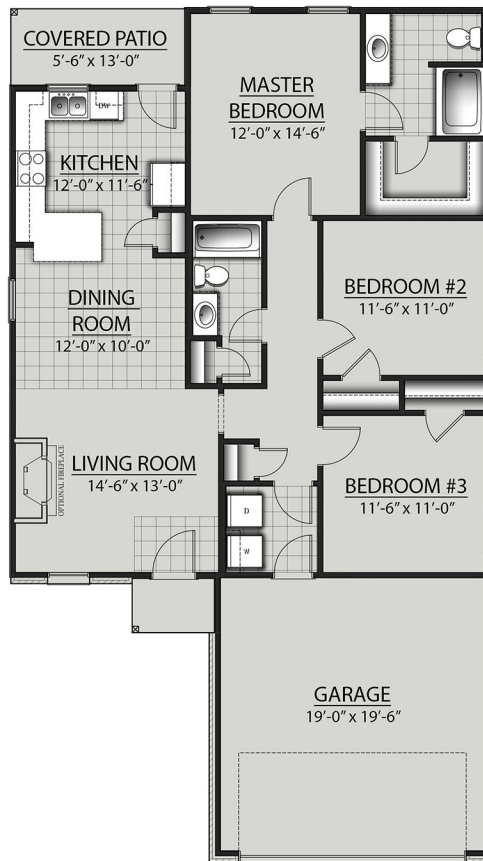


# THE CRESWELL G IV PLAN



## Living Area

1321 Square Feet

## Total Area

1819 Square Feet

## Features

- Open Floor Plan
- Three Bedrooms, Two Full Bathrooms
- Two Car Garage
- Brick & Siding Exterior
- Recessed Canned Lighting in Kitchen and Dining
- Large Master Tub
- Walk-In Master Closet
- Covered Patio



Floor plans and elevations are subject to change without notice. Elevations and renderings are artistic conceptions and may not accurately depict home styles. Characteristics, including but not limited to windows, doors, plan configurations and orientations are subject to change per home site. Information contained in this flyer is subject to errors, omissions, changes, withdrawals and prior sales without notice.