

The Norwood Traditional

Ready Home for Sale



Driveway & landscaping not included.
Not actual home, but similar plan.

\$699,900*

March Occupancy

Settlement at Hoods Creek (Lot 98)
2402 Hoods Creek Path
Mount Pleasant, WI 53406

- 4 Bedrooms
- 2.5 Bathrooms
- 2,372 SF
- 3 Car Garage (extended depth)

Directions:

I-94 exit Hwy C/Spring Street. East on Hwy C/Spring Street. Left on Airline Road. Left on Gittings Road. Right on Settlement Trail into neighborhood.

*Price subject to change without notice.



KITCHEN FEATURES

Designer Kitchen featuring stained cabinetry with crown molding, soft close doors/drawers & convenient roll-out trays in island

Quartz countertops, tile backsplash, island w/ flush snack bar

GE® Designer kitchen appliance package w/built-in microwave, dishwasher, slide-in gas range, chimney style hood & built-in look French door refrigerator in slate finish

MAIN LEVEL FEATURES

16'x12' sunroom

Transom windows in great room

Select jamb & cased windows

Luxury vinyl plank flooring in foyer, kitchen, nook, sunroom, office, great room, powder room, laundry/mudroom, & bath 2

Gas fireplace w/ stacked stone surround & boxed mantel w/ returns

Double swing glass doors in office

Separate laundry & mudroom

Built-in lockers in mudroom

Laundry room w/ cabinets & folding table

4 1/4" base & 3 1/2" casing

MASTER SUITE FEATURES

Two large walk-in closets w/ melamine shelving

Double bowl vanity

4'x5' tiled shower w/frameless glass door, wall to wall tiled shampoo shelf, & tiled bench

Tile flooring

Separate commode room

ADDITIONAL FEATURES

Walk-in closets in bedroom 2 & 3

James Hardie® fibercement lap siding, trim, & corner boards & additional stone to front elevation

Extended 3 car garage

Insulated overhead garage doors & belt-driven ultra quiet garage door opener

Solid core doors

Basement bathroom plumbing rough in

Egress windows

Pella® windows

Dura Supreme® Cabinets

Moen® Faucets & Kohler® Toilets

Maxim® Light Fixtures

2x6 Construction

Focus on Energy Certified

Builder Warranty Included

Floor Plan on Other Side →



ASK RYAN!

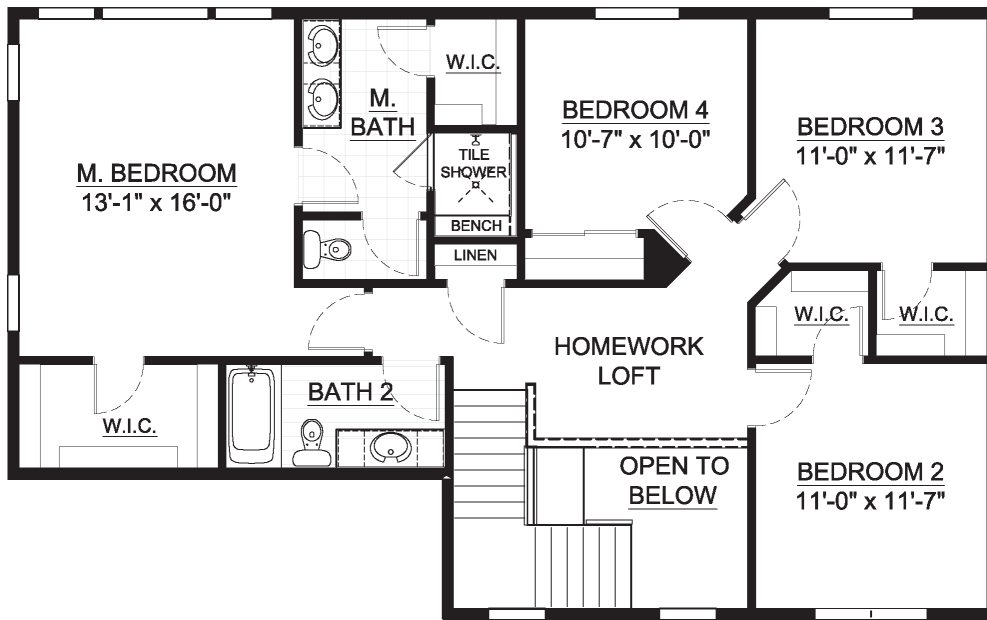
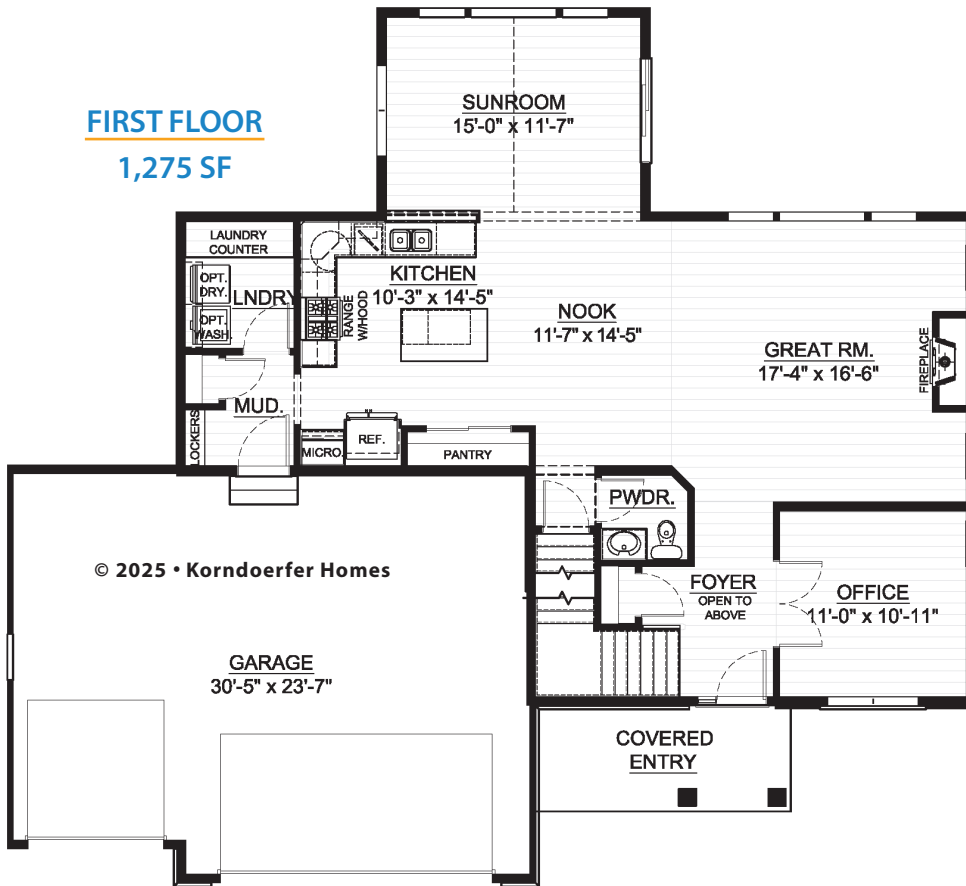
Online Sales Consultant
262-884-9551
sales@korndoerferhomes.com



The Norwood Traditional Floor Plan

FIRST FLOOR

1,275 SF



SECOND FLOOR

1,097 SF



ASK RYAN!

Online Sales Consultant
262-884-9551
sales@korndorferhomes.com

KORNDORFER
HOMES
KORNDORFERHOMES.COM

