

DESIGN

NAPLES - 3117



A



B



C



D



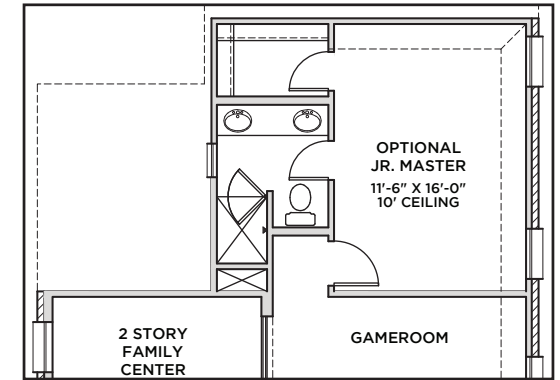
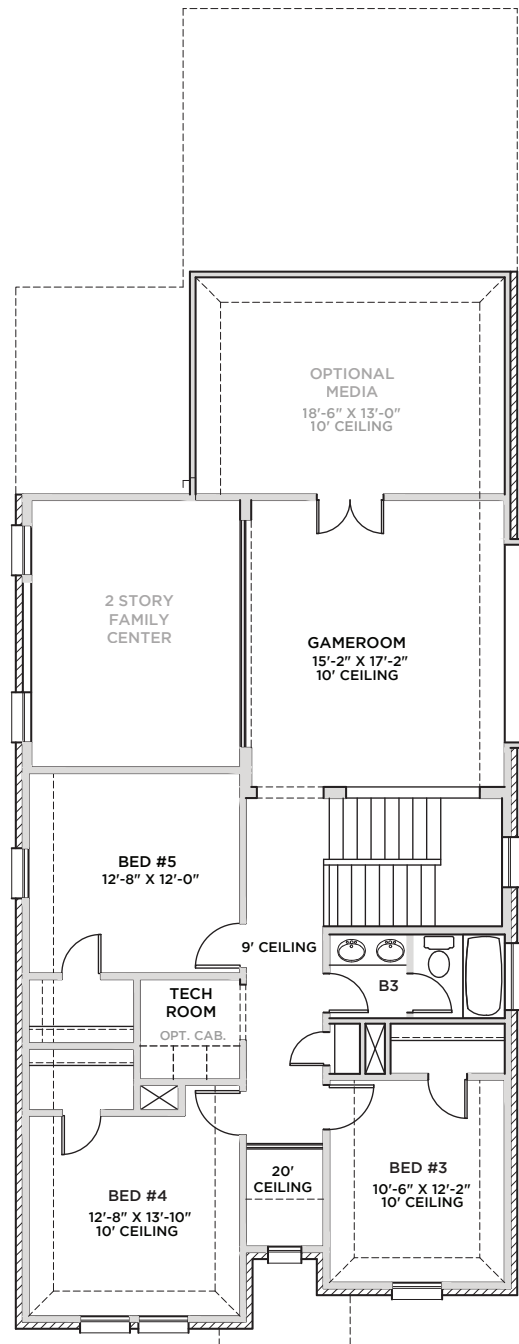
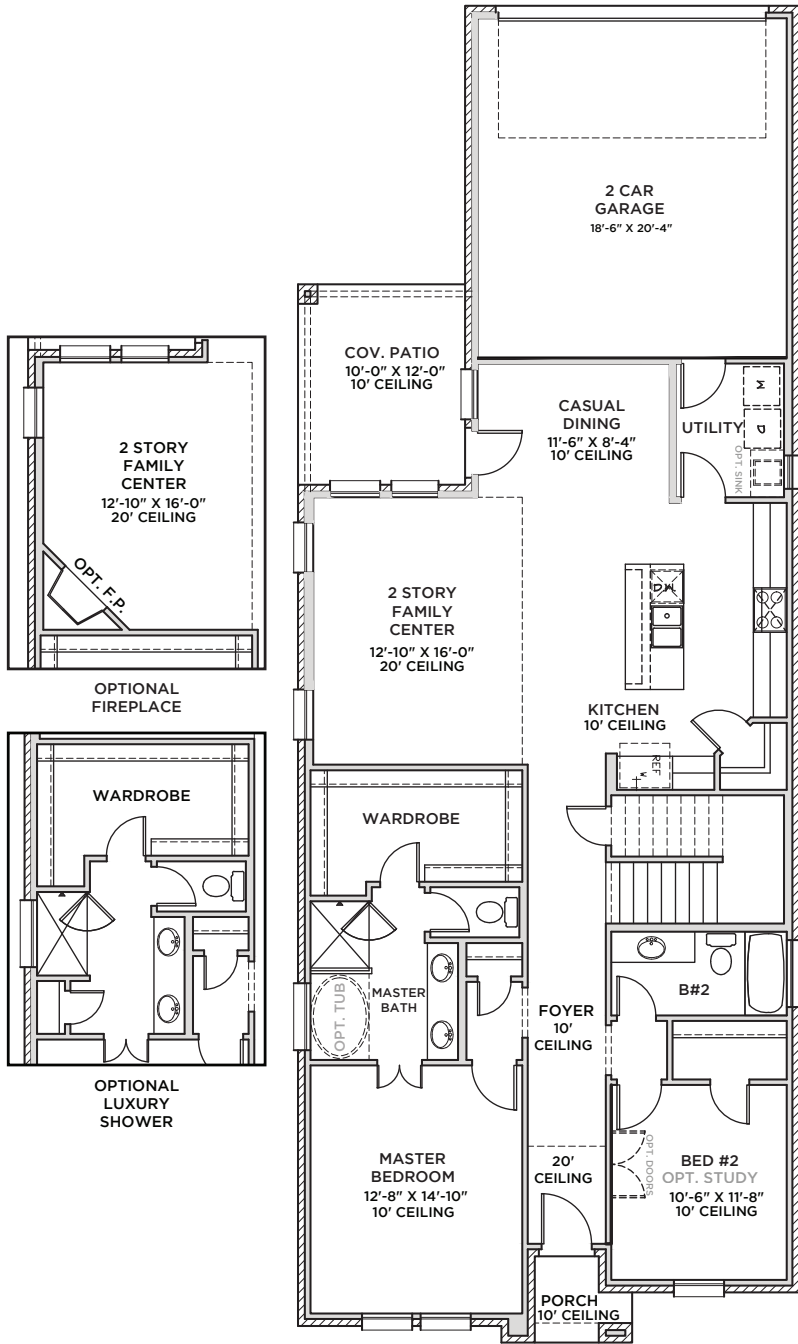
E



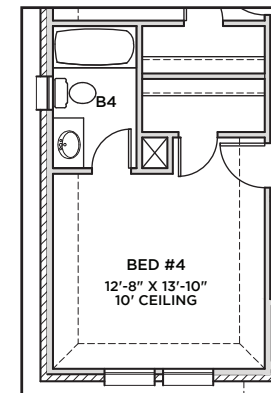
F



All Product including Architectural Designs, ©2000-2026, Shaddock Homes, LTD., All rights reserved. There may be existing or future design changes made in the floorplans, building products, methods, square footage or designs used in our homes that are not reflected in our information, sales center or in our models. The materials, designs, square footages, features, and amenities shown are based upon current development plans, which are subject to change without notice. No guarantee is made that the designs, square footages, materials, features, and amenities depicted by artist's renderings or otherwise described will be built, or if built, will be of the same type, size or nature as depicted or described. All stone elevations, metal roofs, cast stone door and window headers and solid sawn cedar posts are optional, but available via change order. Front doors will match the specification sheet or chosen door upgrade. Prices and terms subject to change without notice. [REVISION DATE: 7.1.2022](#)



OPTIONAL JUNIOR MASTER



OPTIONAL PRIVATE BATH 4 w/ BED 4

NAPLES
3117 F (7.1.22)

First Floor	S.F.T	1622
Second Floor		1108
Total Living Area		2730
2 Car Garage		422
Covered Patio		120
Covered Porch		28
Total Area		3400
Options		
Junior Master		320
Media Room		261

SHADDOCK HOMES