

The Stuart

Farmhouse 'B'



Options Shown: Black Windows

Craftsman 'A2'



Options Shown: Stone Half Columns With Tapered Posts Above, Stone Foundation, & Steps

Farmhouse 'A'



Options Shown: Metal Roof Over Porch

Craftsman 'A'



Traditional 'A'

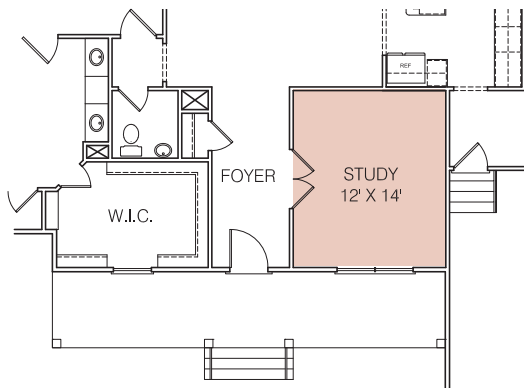
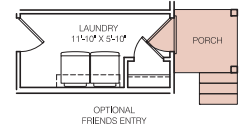
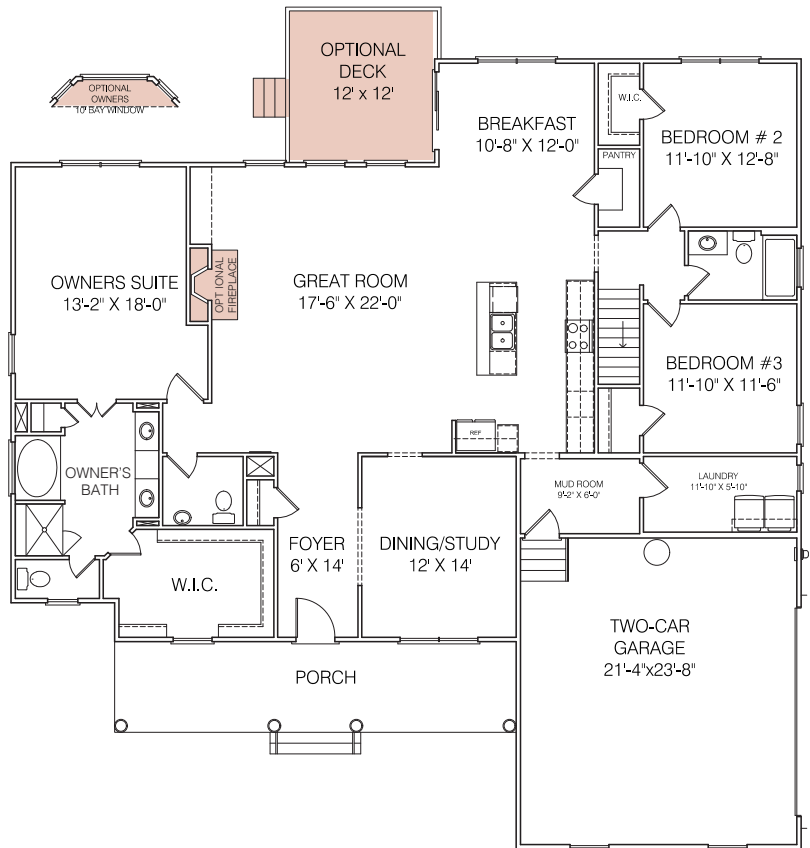
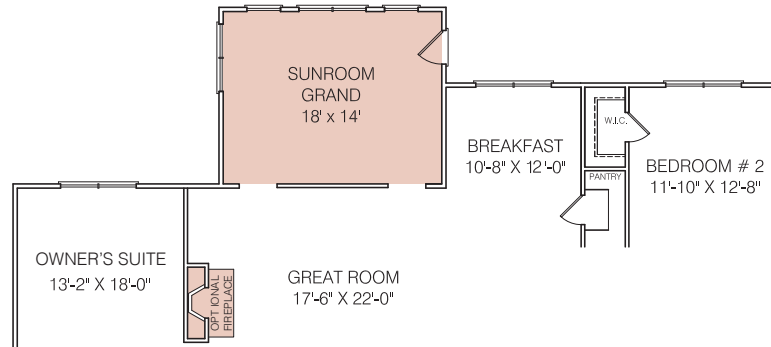


Garage door location per neighborhood

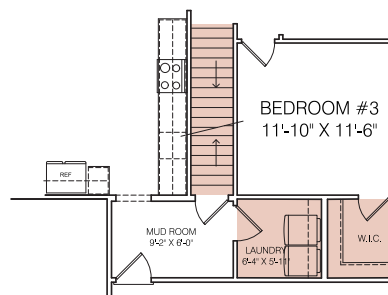
Other elevations may be available. Please ask a New Home Consultant for details.

Design your own elevation or floorplan using our **Interactive Floorplans** by visiting GoMSH.com/plans.

The Stuart 1st Floor Plan



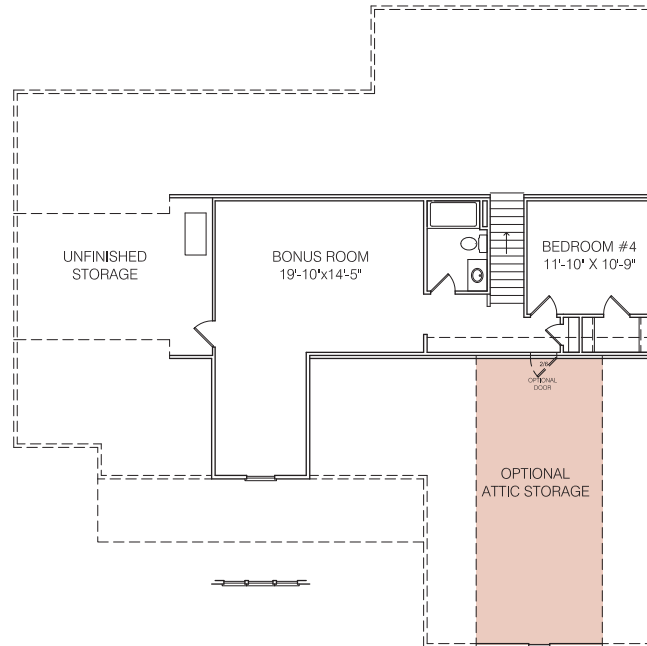
Optional Study Layout



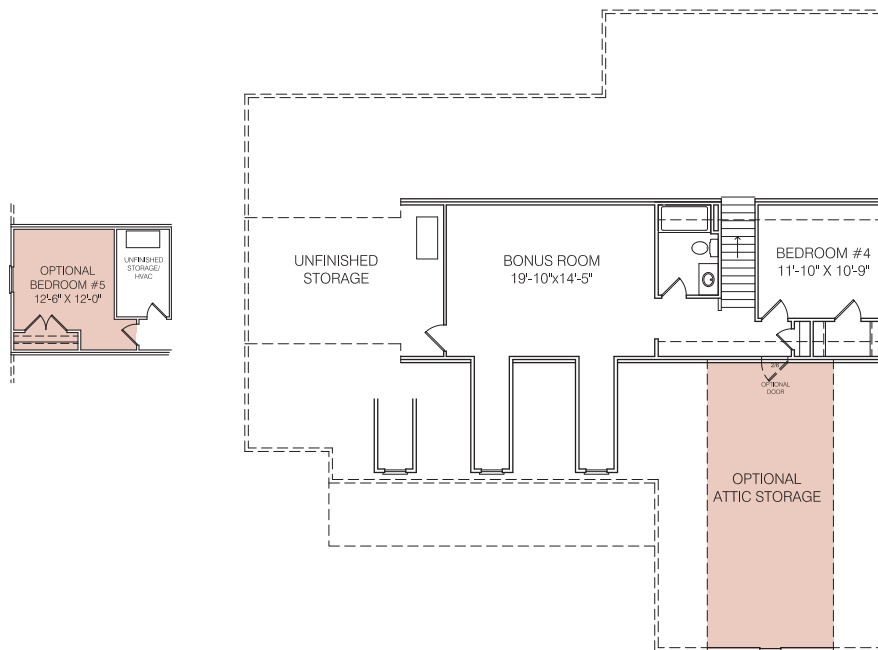
Stair Location With Optional Basement

The Stuart 2nd Floor Plan

Farmhouse & Craftsman Second Floor

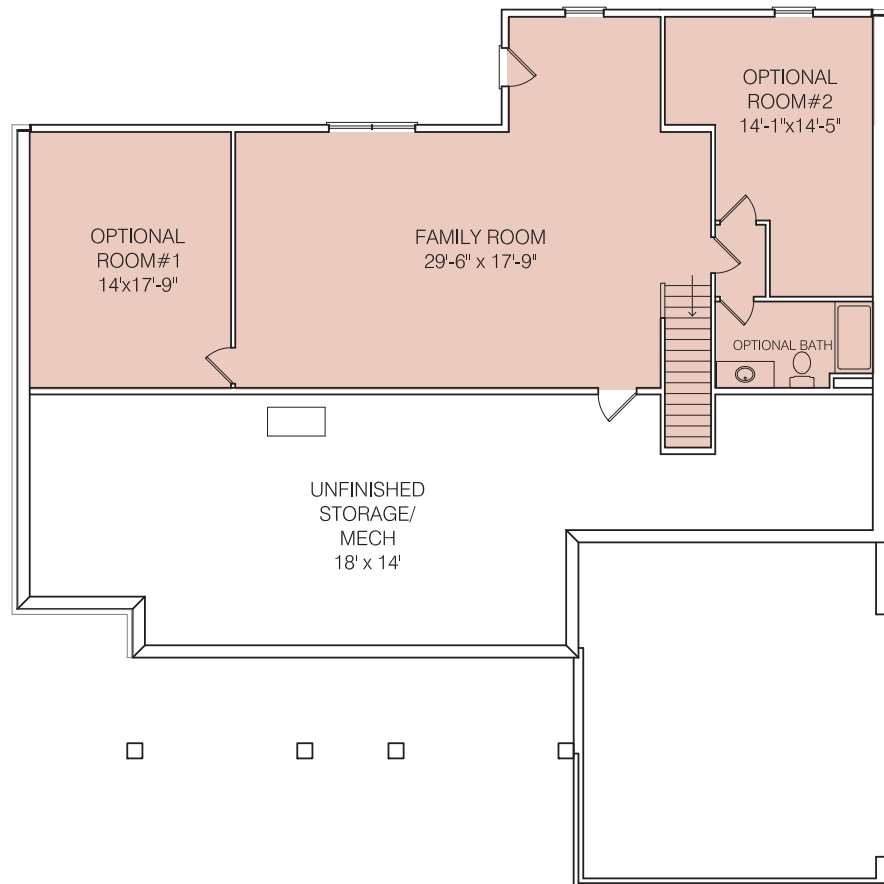


Traditional and Craftsman '2' Second Floor



The Stuart Basement

Optional Basement



Square Footage

First Floor	2,276
Second Floor	710
(Craftsman 'A' /Farmhouse 'A')	
Second Floor	683
(Craftsman 'A2'/Traditional 'A')	
Second Floor	636
(Farmhouse 'B')	
Total	2,912-2,986
Opt. 5th bed	205
Basement	2,125
Garage	525
Footprint	61'x61'

Although all illustrations and specifications are believed correct at the time of publication, the right is reserved to make changes, without notice or obligation. Windows, doors, ceilings, and room sizes may vary depending on the option and elevation selected. Optional items indicated are available at additional cost.

This brochure is for illustrative purposes only and not part of a legal contract. It is recommended that the architectural blueprints be reviewed for further clarification of features. Not all features are shown. Please ask our New Home Consultant for complete information.

We are pledged to the letter and the spirit of the United States Policy for the achievement of equal housing opportunity throughout the Nation. We encourage and support an affirmative advertising and marketing program in which there are no barriers to obtaining housing because of race, color, religion, sex, handicap, familial status or national origin.