



Craftsman



Modern Farmhouse

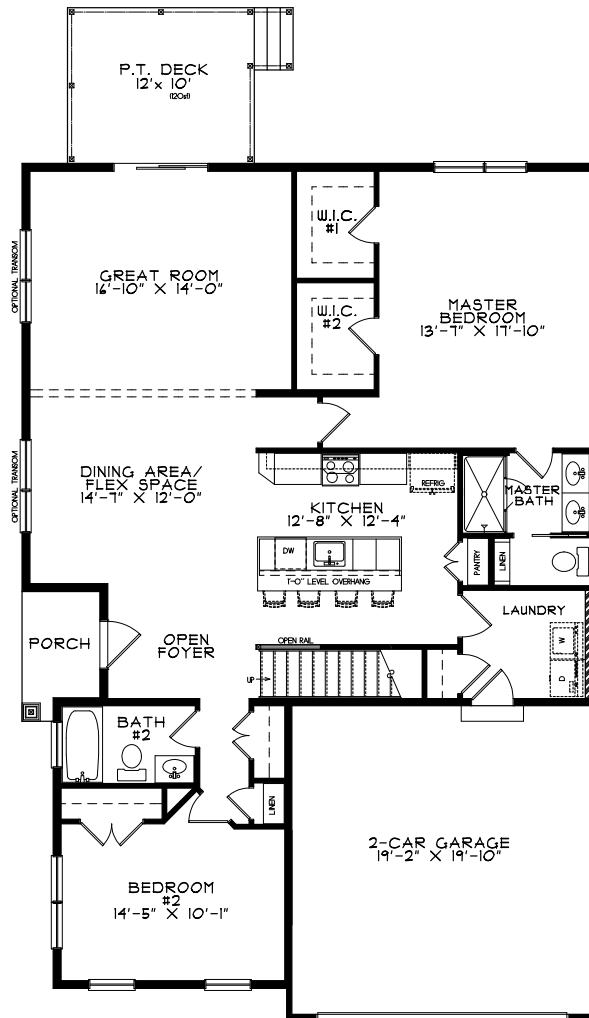


KAY BUILDERS
DECADES OF EXCELLENCE
EST. 1961

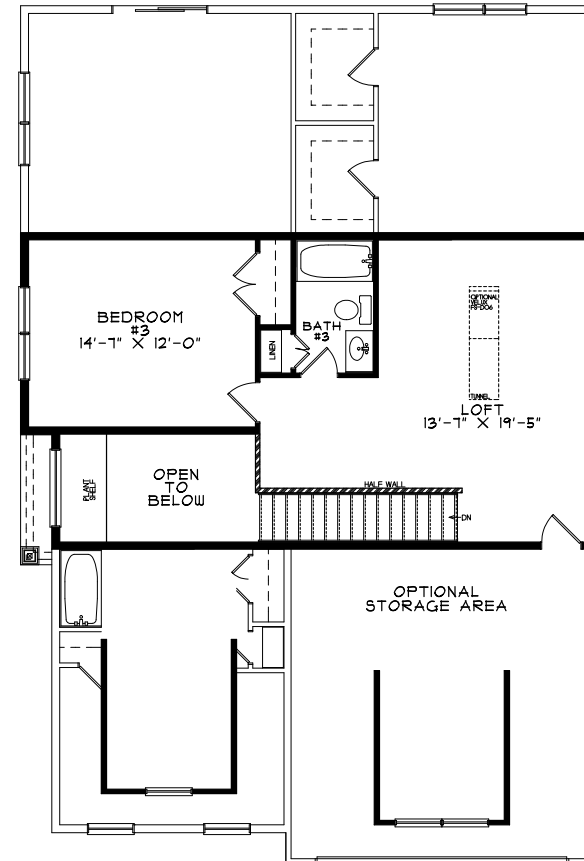
All floor plans and renderings shown are artist's renditions, are subject to change without notice, and may show upgrades or optional features not included as standard. Please consult Sales Manager for details. All dimensions are approximate and subject to field variations. Builder not responsible for printer's errors and/or omissions. © Kay Builders 2025

SOMMET - LW

2,183 SQFT



FIRST FLOOR



SECOND FLOOR

Floor Plan shown is of Craftsman elevation.

Floor Plan with Optional Basement is available. See Sales Manager for full Plan details.