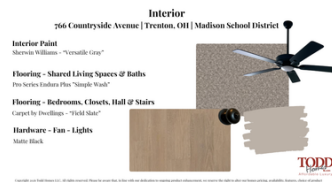


# 766 Countryside Avenue Arlington Parke | Trenton, Ohio

**TODD**  
Homes  
llc.com  
Affordable Luxury



- NO HOA Community in the Madison School District
- Wooded Views
- First-Floor Study
- Open-Concept Design with Great Room, Open Dining Room, and Kitchen Blending Together
- Kitchen Features Calacatta Bali Quartz Countertops, Two-Tone, Soft- Close Shaker Cabinetry, Island, Spacious Pantry, and Stainless Steel Appliances
- LVT Flooring in All Shared Living Spaces
- Primary Suite with Walk-In Closet and Adjoining Lux Bath
- Primary Bath with Oversized Walk-In Shower, Bathing Bench, Quartz Countertops & Moen Fixtures
- Second-Floor Laundry
- Secondary Full Bath with Quartz Countertops and Double Vanity
- Full Basement with Full Bath Rough-In for Future Living Spaces

4  
Bedrooms

2.5  
Bathrooms

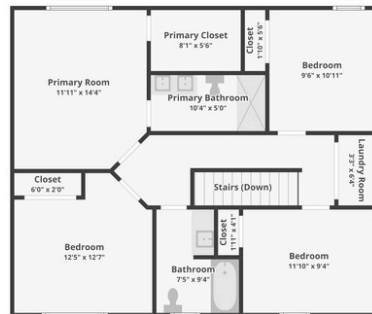
2 Car  
Garage

1765  
Square Feet

# 766 Countryside Avenue Arlington Parke | Trenton, Ohio



First Floor



Second Floor



LEARN MORE

CONTACT US 513.823.3774

VISIT US: [www.toddhomesllc.com](http://www.toddhomesllc.com)