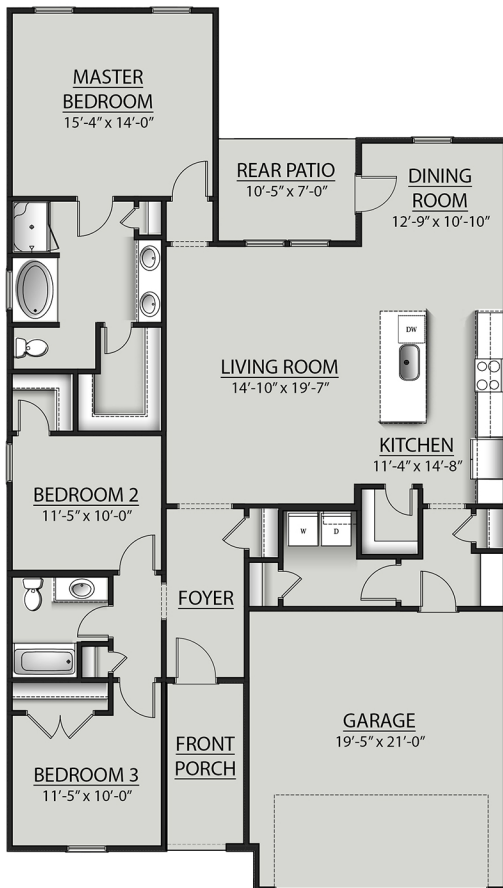


THE NOVATO G IV PLAN



Living Area

1682 Square Feet

Total Area

2273 Square Feet

Features

- Open Floor Plan
- Three Bedrooms, Two Bathrooms
- Siding Exterior
- Double Master Vanity
- Walk-In Master Closet
- Separate Master Shower
- Walk-In Pantry
- Recessed Can Lighting in Kitchen
- Two Car Garage
- Covered Rear Patio



Floor plans and elevations are subject to change without notice. Elevations and renderings are artistic conceptions and may not accurately depict home styles. Characteristics, including but not limited to windows, doors, plan configurations and orientations are subject to change per home site. Information contained in this flyer is subject to errors, omissions, changes, withdrawals and prior sales without notice.