



STONE BRIDGE HOMES NW



Autumn Sunrise



**BEDROOM &
FULL BATH
ON
MAIN FLOOR!**

**3 CAR
TANDEM
GARAGE!**

**9261 SW SALINAN ST
HOMESITE 390
PLAN 341**

ABOUT THE PROPERTY

Bedroom & full bath on main! Drop bevel style alder cabinetry w/multiple upgrades, slab quartz countertops in kitchen/bathrooms. Whirlpool stainless steel appliances inc. 5-burner gas cooktop, double wall oven, wall microwave, stainless steel tub dishwasher & chimney hoodvent. Delta Woodhust plumbing fixtures in bathrooms in stainless steel finish. Vaulted great room ceiling w/natural light & floating gas fireplace with box beam mantle. Primary suite inc. 5x4 all tile shower, garden tub, dual sink vanity and dual walk-in closet. Front/rear landscaping fenced w/gate. Tankless water heater, central A/C. Earth Advantage Certified!

FEATURES

- ✓ 5 BED / 3 BATHS / BONUS
- ✓ 3,136 SF HOME
- ✓ 3 CAR TANDEM GARAGE
- ✓ VAULTED GREAT ROOM
- ✓ GENEROUS PRIMARY SUITE
- ✓ CENTRAL AIR CONDITIONING
- ✓ FULLY FENCED & LANDSCAPED

\$849,916

RMLS# 144064265



**STONE BRIDGE
HOMES NW**



503.746-6215

GaryC@stonebridge-realty.com



MODEL HOME:

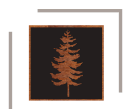
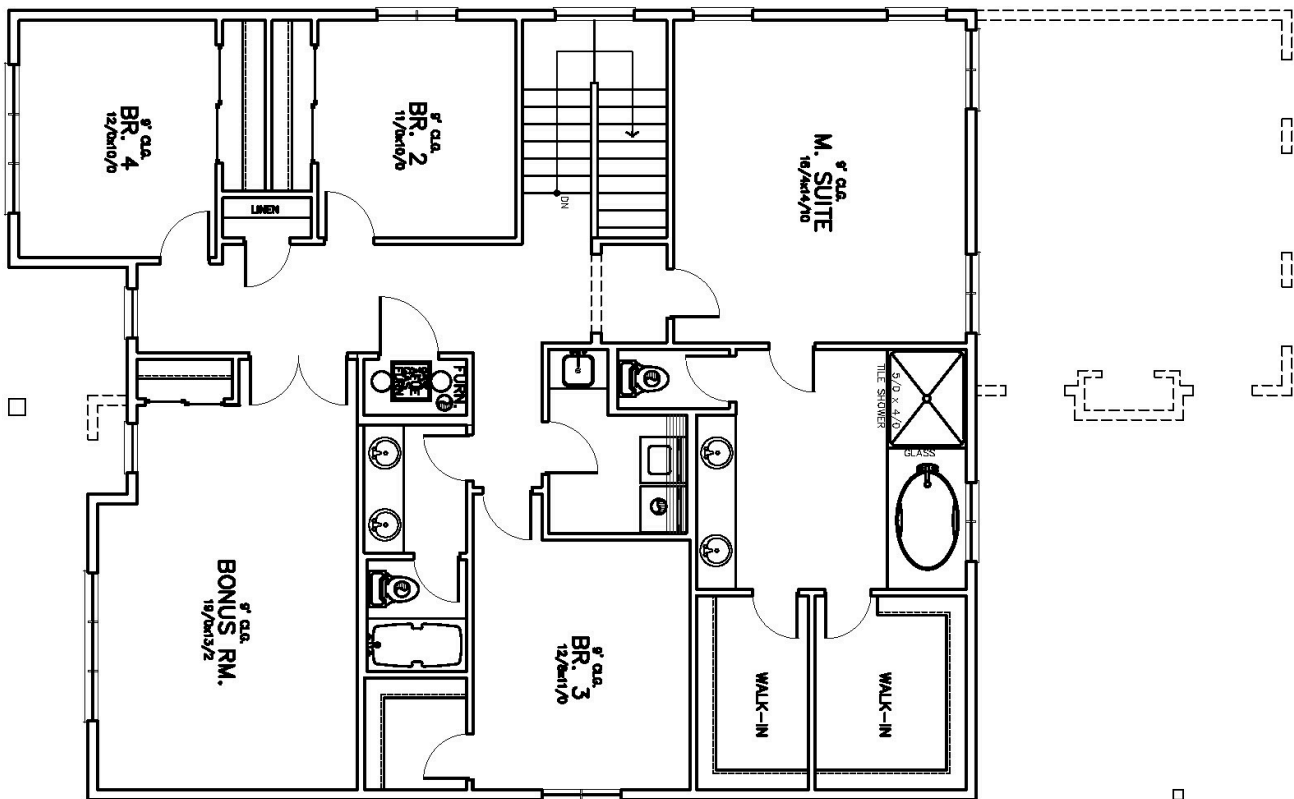
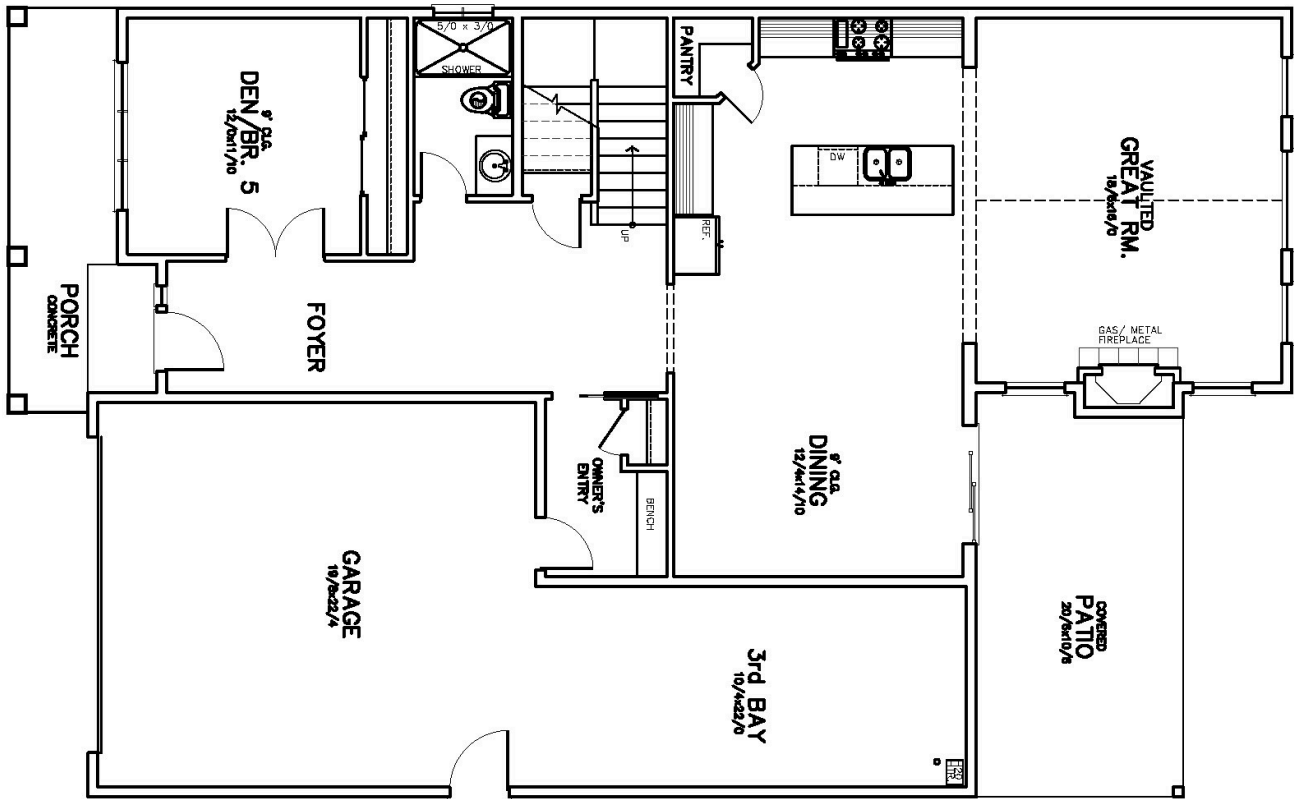
**9345 SW SALINAN STREET
TUALATIN, OR 97062**

Prices, features, and incentives are subject to change. Photos and drawings are for illustrative purposes only and actual details may vary. Please see a sales representative and the sale agreement for additional information. CCB#173318



HOMESITE 390

9261 SW SALINAN ST
TUALATIN, OR 97062



Autumn Sunrise