



CALIBER HOMES

CHARACTER REDEFINED

# 182 FAN MILL

Offered at

**\$861,784**



## THE FRANKLIN

### PROPERTY FEATURES:



4 Bedroom



3.5 Bathroom



3 Car



3130 Sq Ft



Full Foam Insulation

*ABOUT: "A PLACE FOR EVERYTHING, EVERYTHING IN ITS PLACE," -BENJAMIN FRANKLIN*

The Franklin Plan is a Caliber Modern Farmhouse designed to create seamless experiences within the home. It features a stunning Front and Rear Porch, Prep Kitchen, Dining Space, Office, Open Concept Living and Extended Workshop/Garage. Caliber's Perfect Flow Floorplan shines in the Franklin, come see why "We Make you Want to Move!"

### CONTACT DETAILS:



817-360-0249



[sales@caliberhomestx.com](mailto:sales@caliberhomestx.com)



[www.caliberhomestx.com](http://www.caliberhomestx.com)

All plans and elevations are subject to change without prior notice. All Caliber Homes floor plans & elevations are copyrighted. Caliber Homes will enforce copyright laws to their fullest extent. All plan numbers are approximations of square footage and may vary with alternate elevations.

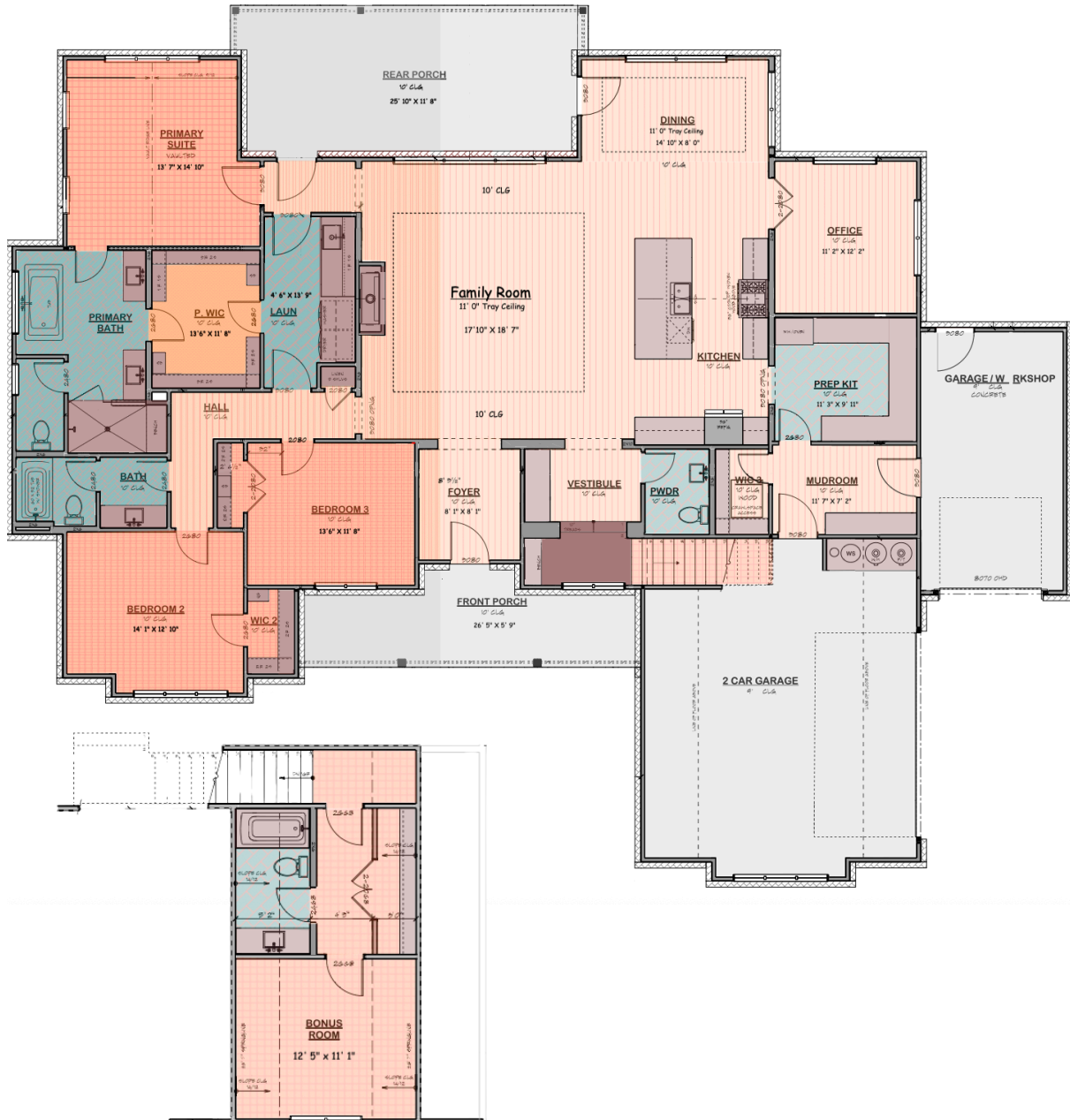
Please note: In an effort to continually improve our floor plans and elevations, Caliber Homes reserves the right to make alterations to the designs without prior notice.



CALIBER HOMES

CHARACTER REDEFINED

# 3130 SQ. FT. THE FRANKLIN



## SQUARE FOOTAGE TOTALS

2775	1 ST FLOOR
355	2ND FLOOR
463	COVERED PORCHES
871	GARAGE
4464	TOTAL A.U.R.

All plans and elevations are subject to change without prior notice. All Caliber Homes floor plans & elevations are copyrighted. Caliber Homes will enforce copyright laws to their fullest extent. All plan numbers are approximations of square footage and may vary with alternate elevations.

Please note: In an effort to continually improve our floor plans and elevations, Caliber Homes reserves the right to make alterations to the designs without prior notice.