



STONE BRIDGE HOMES NW



RIVER TERRACE CROSSING

Fall-Into-Savings Event

**THIS HOME QUALIFIES
FOR A \$35,000
INCENTIVE! FALL
SAVINGS ARE HERE**

**DAYLIGHT
BASEMENT PLAN
WITH STUNNING
TERRITORIAL
VIEWS UPSTAIRS!**



15666 SW EVERGLADE AVE

- OPEN DAYLIGHT BASEMENT PLAN
- MODERN STYLE ALDER CABINETRY IN NUTMEG STAIN WITH MULTIPLE UPGRADES
- SLAB QUARTZ COUNTERTOPS WITH UNDERMOUNT SINKS IN KITCHEN AND BATHROOMS
- STAINLESS STEEL WHIRLPOOL 5 BURNER GAS COOKTOP, BUILT-IN DOUBLE OVENS AND MICROWAVE, STAINLESS STEEL TUB DISHWASHER AND CHIMNEY HOOD VENT
- BUILT-IN SHELVES FLANKING THE FIREPLACE
- BLACK METAL PICKET RAILING WITH STAINED WOOD TOPRAIL
- AIR CONDITIONING WITH NEST THERMOSTAT AND TANKLESS WATER HEATER
- FULLY FENCED AND LANDSCAPED FRONT AND REAR YARD WITH GATE AND SPRINKLER SYSTEM ON A TIMER
- SPACIOUS COVERED DECK WITH GAS LINE FOR FUTURE BBQ
- EARTH ADVANTAGE CERTIFIED, BUILT WITH ENERGY SAVING FEATURES

RMLS# 524705599

Homesite #164

Plan 487

Standard

3,756 SQFT

4 BEDROOM

4 BATHS

DEN/5th BED

+ REC. ROOM

2 CAR GARAGE

LIST PRICE

\$1,033,861

SCAN QR
CODE
FOR
AVAILABLE
FINANCING
OPTIONS



Since 2006, Stone Bridge Homes NW has been recognized as an innovative leader in new home construction in the Pacific Northwest. We are proud to construct quality energy efficient houses that our owners delightfully call "home."

For more information:

GaryC@StoneBridge-Realty.com

503-746-6215



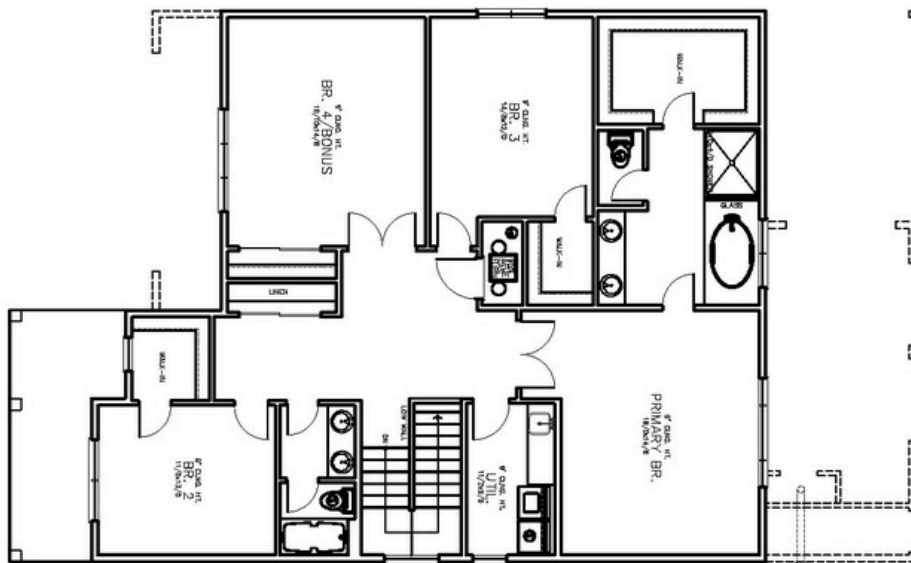
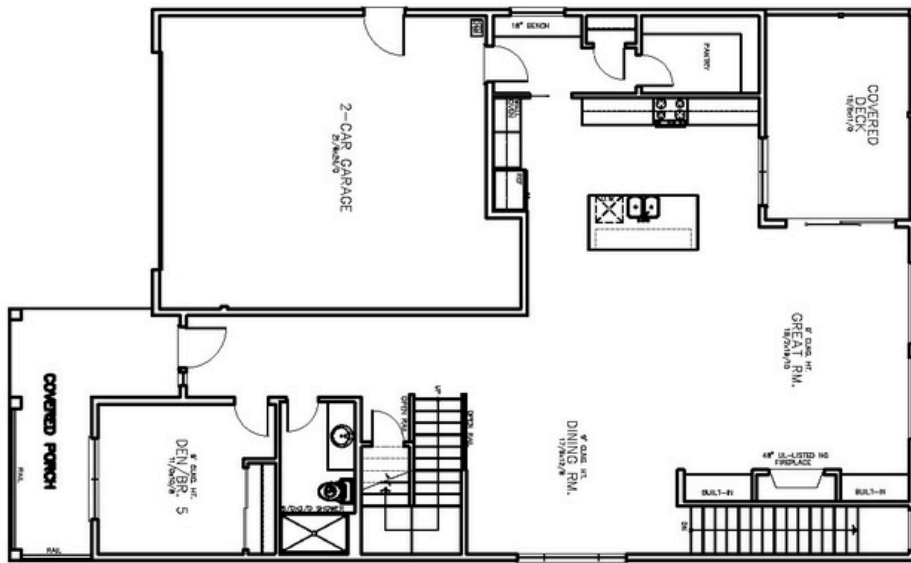
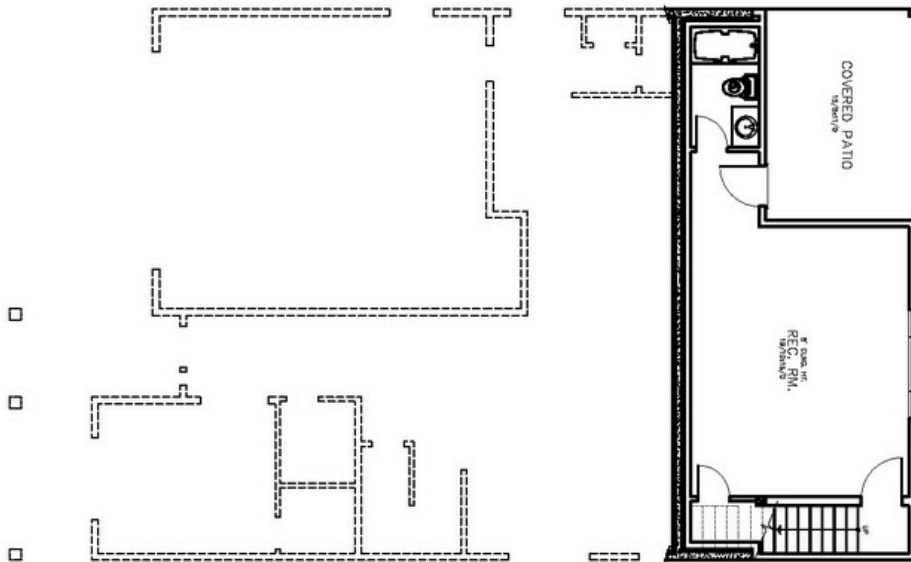
WWW.STONEBRIDGEHOMESNW.COM

Prices, features, and incentives are subject to change. Photos and drawings are for illustrative purposes only and actual details may vary.

Please see a sales representative and the sale agreement for additional information. CCB#173318

*Special financing examples provided by Prime Lending. Financing through Builder's preferred lender not required to receive incentive.

See sales associate for details.



RIVER TERRACE
CROSSING