

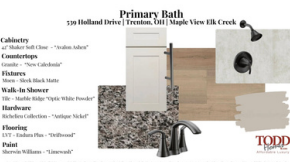
6802 Cork Drive



WEST RIDGE IN WEST CHESTER, OHIO



The Alameda



SOME SPECIAL FEATURES:

- Custom, Modern Craftsman at 2489 SF, 3/4 BR & 3 BA & 3 Car Garage
- An Open-Concept Plan, Accentuated by Soaring Ceilings, Fosters Connectivity Throughout the Living Spaces
- 1st Floor Guest Suite/Office/Bonus Room with French Doors and Adjoining Full Bath - Versatile Space For Your Needs
- Primary Suite offers 2 Walk-In Closets & Adjoining Spa-Like Bath with a Walk-In Shower with Floor to Ceiling Tile, Framless Door, and a Bathing Bench, Quartz Topped Vanity, Dual Sinks & Sleek Moen Fixtures in Matte Black
- Great Room with Soaring 9ft Ceiling and Stunning Custom Fireplace Flows Easily Into the Chef's Kitchen and Open Dining Room
- Spacious, Upscale Kitchen with Quartz Countertops, Island, Ambient Lighting, 42" Soft Close Shaker Cabinetry with Crown Molding and Stainless Steel Appliances, Including Gas Stove with a Canopy
- Bonus Room (395 SF) on Second Floor For Future Expansion
- Full Lower Level with 9ft Ceiling, Full Bath Rough-In and Egress For Future Living Spaces

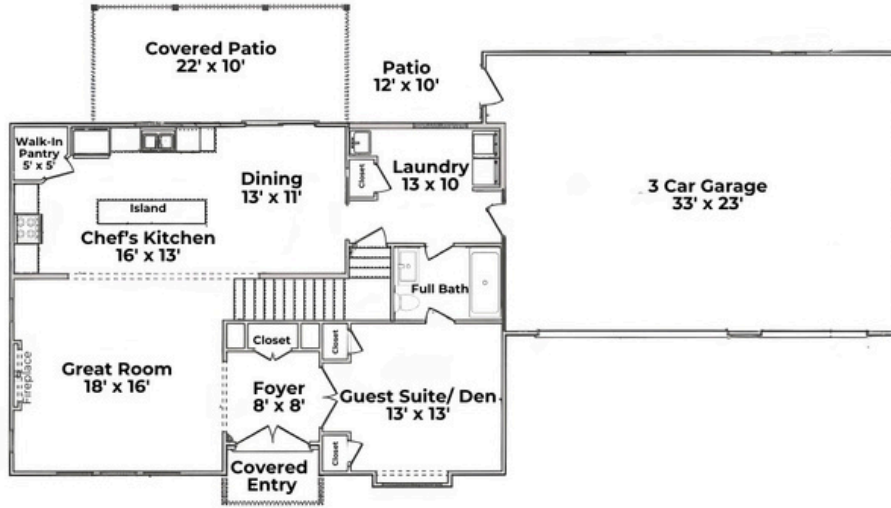
3 or 4
Bedrooms

3
Bathrooms

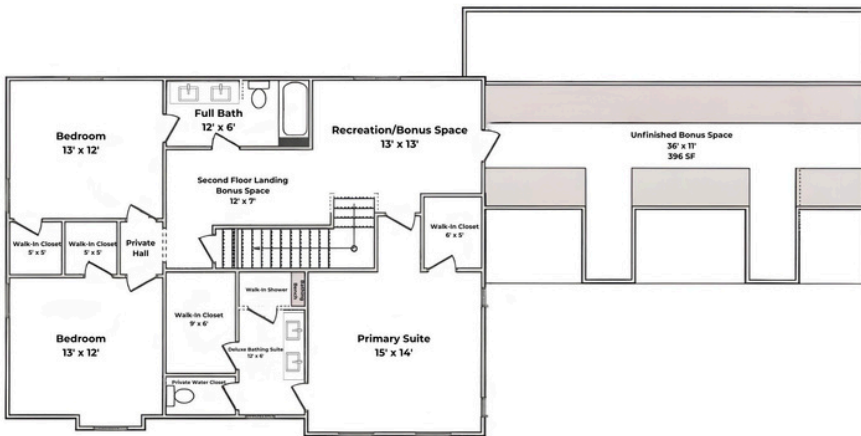
3
Garage

2489
Square Feet

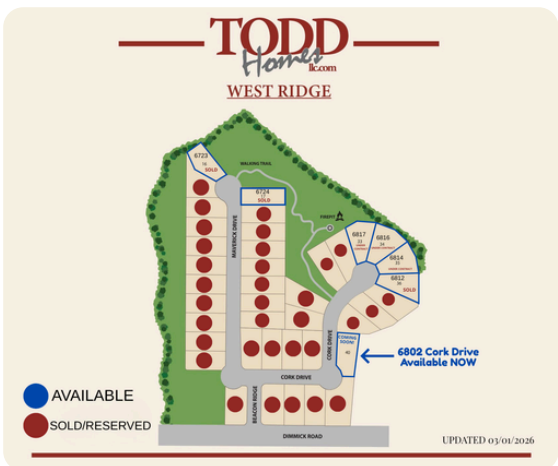
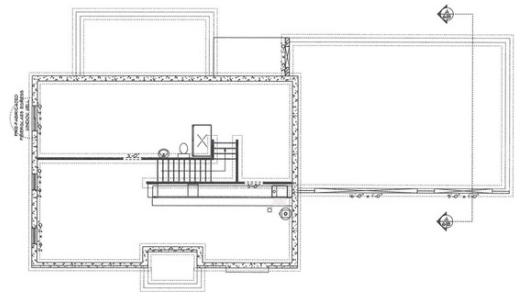
First Floor



Second Floor



Lower Level



Visit The Alameda



Visit Todd Homes LLC

Copyright 2026 Todd Homes LLC. All rights reserved. Please be aware that, in line with our dedication to ongoing product enhancement, we reserve the right to alter our home pricing, availability, features, choice of product brands, dimensions, architectural details, and design specifications. This brochure serves solely for illustrative purposes and does not form any part of a legally binding contract. Room sizes and square footage are approximate. **For illustrative purposes - not exact colors and finishes.**