

**DABBERT**  
CUSTOM HOMES

THE

*Ashbury*

STARTING AT **\$679,900**

INCLUDES 3-STALL GARAGE

## PROPERTY FEATURES

- Two-story
- Front covered porch with maintenance-free decking
- Large pantry
- Double-volume ceilings in living room
- Main floor office or bedroom
- Large owner's suite & closet on main floor
- Three bedrooms on upper floor
- Large upper-floor living space
- Upper-floor laundry room and pocket office
- Unfinished lower floor
- Up to two additional bedrooms on lower floor
- Optional morning kitchen
- Insulated & sheetrocked garage with floor drain

 5 BD RM  2.5 BATH  4,805 SQFT

 3 CAR  54' WIDE



*Mike Gillund*

DABBERT CUSTOM HOMES  
REPRESENTATIVE

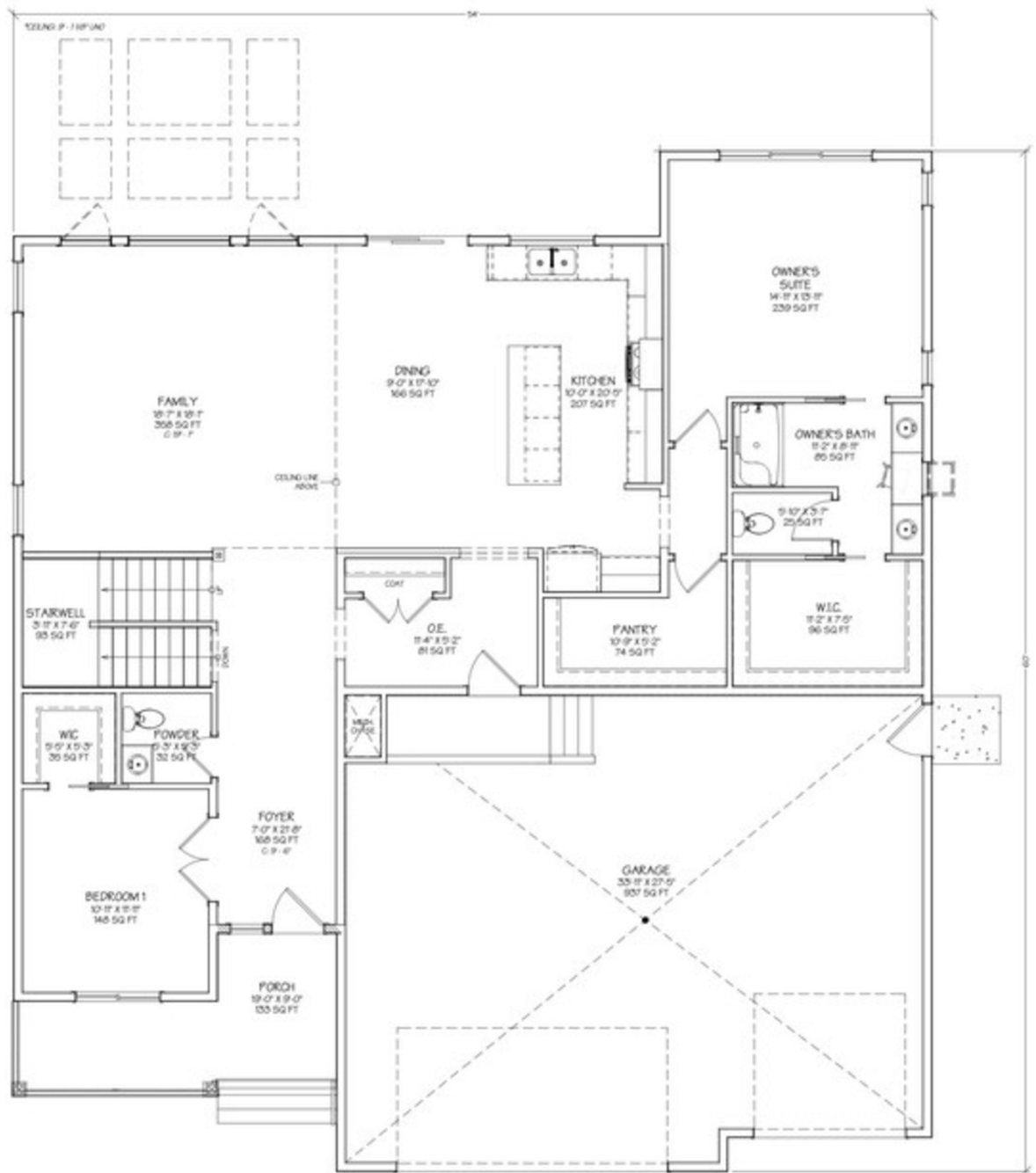
Pricing and square foot are subject to change. Printed 9/15/25.

701-371-9163  
MIKE@DABBERTHOMES.COM  
DABBERTHOMES.COM

**B. BEYOND**  
REALTY  
*Be Moved.*  
BEYONDDREALTYFM.COM



# THE ASHBURY



**Ashbury 3.0 - Base Plan - Main Floor - 1,850 sq ft**

THIS PLAN IS FEDERALLY COPYRIGHTED BY



©Dabbert Custom Homes. Plans are copyrighted and/or otherwise subject to intellectual property rights of Dabbert Custom Homes, LLC and/or others and cannot be reproduced or copied without Dabbert Custom Homes, LLC prior written consent.



# THE ASHBURY



**Ashbury 3.0 - Base Plan - Upper Floor - 1,096 sq ft**

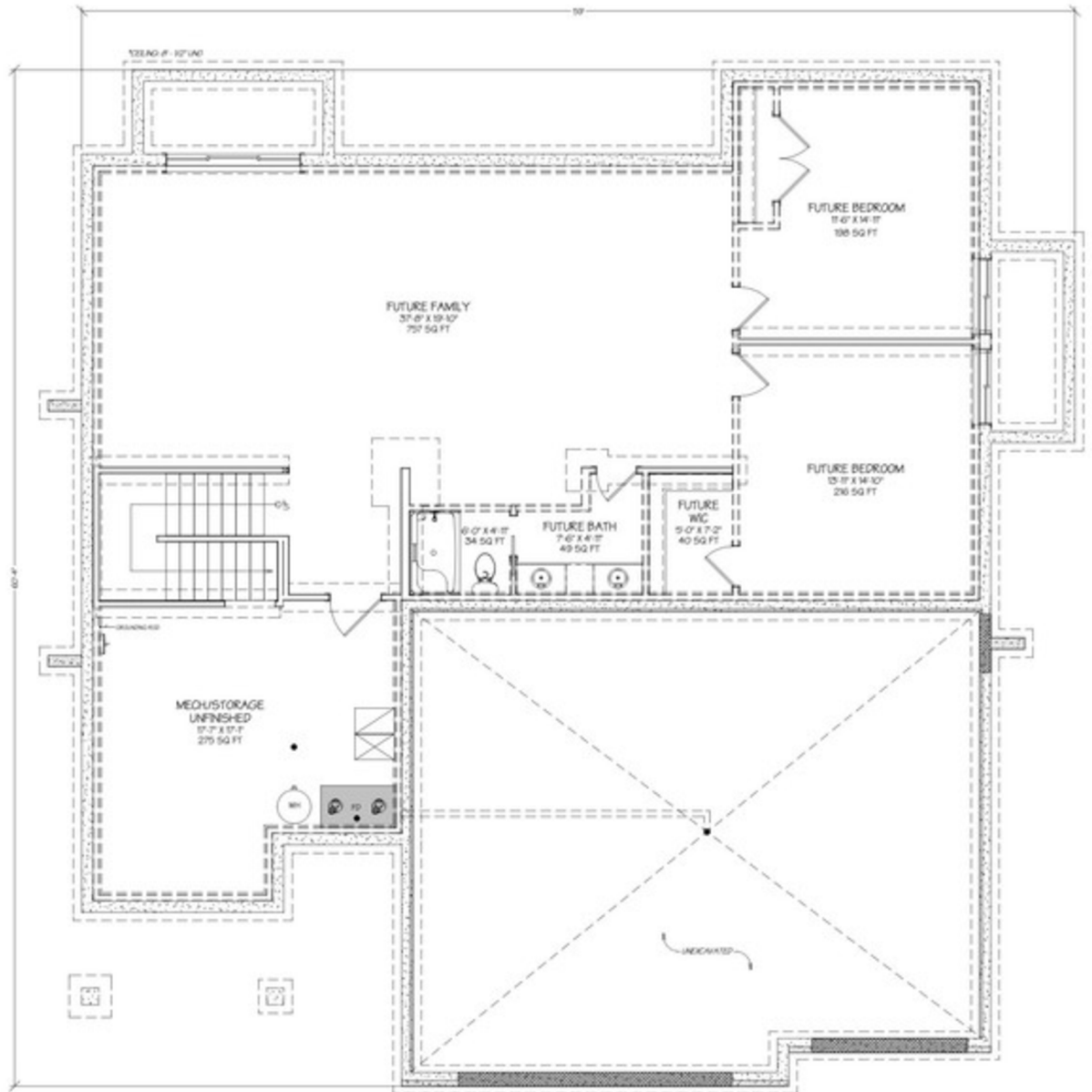
THIS PLAN IS FEDERALLY COPYRIGHTED BY



©Dabbert Custom Homes. Plans are copyrighted and/or otherwise subject to intellectual property rights of Dabbert Custom Homes, LLC and/or others and cannot be reproduced or copied without Dabbert Custom Homes, LLC prior written consent.



# THE ASHBURY



**Ashbury 3.0 - Base Plan - Lower Floor - 1,859 sq ft**

THIS PLAN IS FEDERALLY COPYRIGHTED BY



©Dabbert Custom Homes. Plans are copyrighted and/or otherwise subject to intellectual property rights of Dabbert Custom Homes, LLC and/or others and cannot be reproduced or copied without Dabbert Custom Homes, LLC prior written consent.