




PLAN 3

 **Single-Story**
  **3,019 Sq Ft**

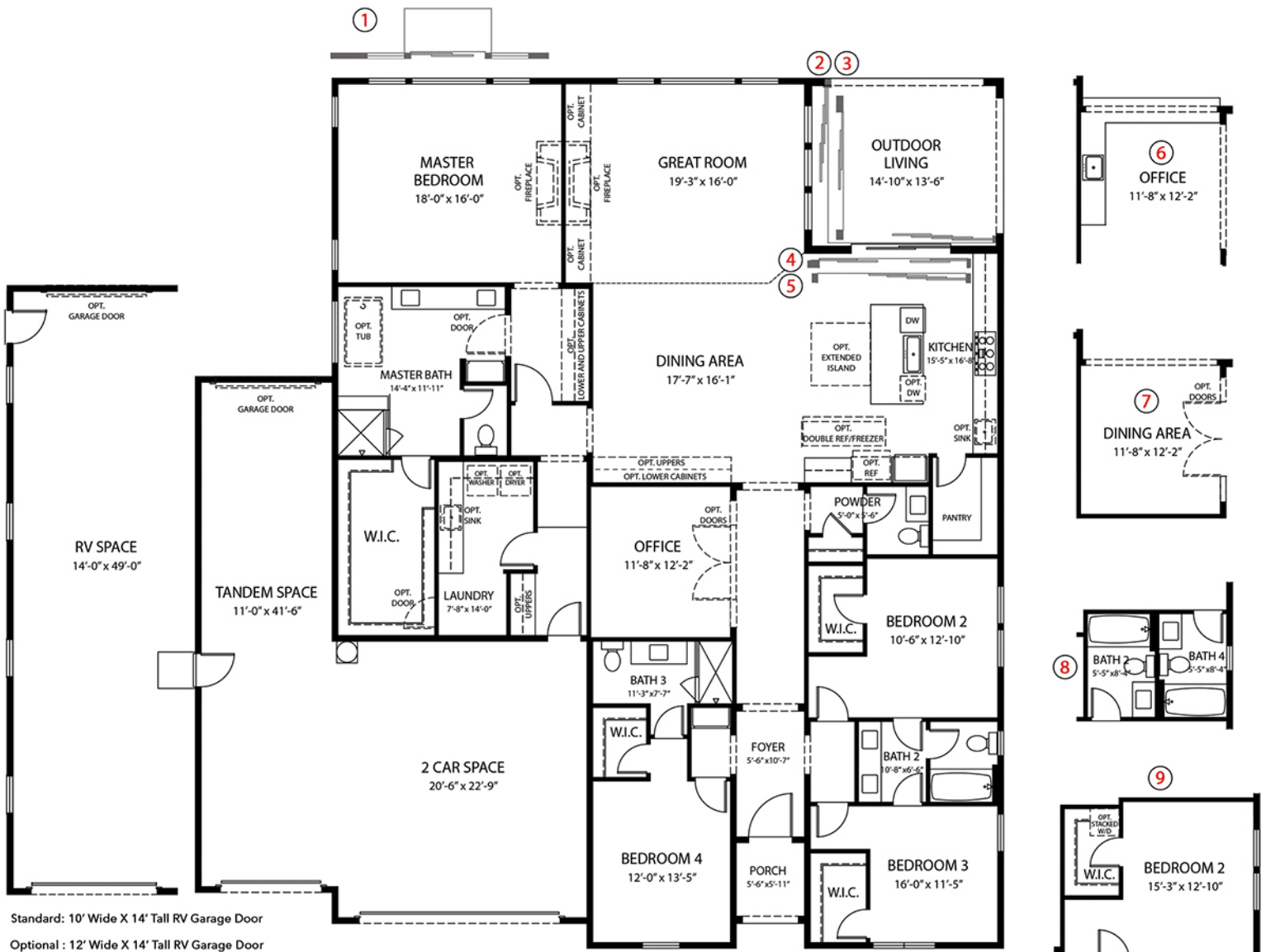
 **4 Bedrooms**
+Office
  **3.5 Bathrooms**
  **4-Car Garage**
*Optional RV Garage Extension

RYDER HOMES

Contact Information
 775-971-4204 | ShadowHills@RyderHomes.com | RyderHomes.com/ShadowHills
 Sales Office Located at 11687 Sugarloaf Peak Drive, Sparks, NV 89441



3,019 Square Feet | 4 Bedrooms | 3.5 Bathrooms | 4-Car Garage
+Office



OPTIONAL CONFIGURATIONS

- | | |
|----------------------------------------------|--------------------------|
| ① 6ft Sliding Glass Door at Master | ⑥ Bar at Office |
| ② 9ft & 12ft Corner Stacking Doors | ⑦ Dining Room ILO Office |
| ③ 9ft Stacking Door at Great Room | ⑧ Bath 2 Bath 4 |
| ④ 4 Panel 12ft Sliding Glass Door At Kitchen | ⑨ Multi Gen Suite |
| ⑤ 12ft Stacking Door at Kitchen | |

Scan the QR Code to visit our Interactive Floor Plan, where you can browse the available builder options and elevation styles for the Shadow Hills Plan 3 Homes.



Included Features



APPLIANCES

- KitchenAid® 30" Gas Oven & 5-Burner Range
- KitchenAid® Microwave/Hood Over Range Combo
- KitchenAid® 24" Top Control Dishwasher

CABINETS

- Beech Wood Derby 2" Shaker Door Stained Cabinets
 - Available Stains: Steel grey, Twilight, Boardwalk, or Pecan

STANDARD COUNTERTOPS, FLOORING & TILE

Countertops

- DalTile Quartz® 2cm Countertops with 4cm Eased Edge and 6" Backsplash in the Kitchen only & 4" Backsplash in the Bathrooms with 2cm edge
 - Available in Simply White, Simply Grey, and Simply Beige

Flooring:

- Mannington ADURA Max Vinyl Plank Hardwood Flooring at the Entry, Kitchen, Master & Secondary Bathrooms, Mud & Laundry Rooms
 - Available Styles: Aspen Drift, Napa Dry Cork, Sunrise, and Sausalito Bridgeway
- Mohawk® Carpet Available in 7 Different Colors at Great Room, Bedrooms/Offices, Closets, Stairs & Hallways
 - 3/8 5lb. Rebond Pad

Master Bathroom Tile:

- 12" x 12" DalTile Cabris® Shower Walls and Decks
 - Available in Umber, Fair, Buff, and Iron

SINKS, FAUCETS & FIXTURES

- Moen® Sleek Chrome Single-Handle Pulldown Kitchen Faucet
- Sterling McAllister® Undermount Stainless Steel Kitchen Sink
- Moen® GENTA Chrome Bathroom Faucets & Fixtures
- Kohler Caxton® Rectangle White Undermount Bathroom Sinks

DOORS, HARDWARE & TRIM

- Modern 8' tall x 3' wide Full-Lite Satin Etched Glass Therma Tru® Entry Door
- Satin Nickel Schlage Schalge® Century Connect Smart Deadbolt with Century Trim
- Fully Encased 8' tall x 1 3/8" thick Single-Panel Interior Doors
- Modern Chrome Schalge® Latitude Interior Door Hardware
- 5 1/4" Square Baseboards

SMART HOME & ELECTRICAL FEATURES

- 6" LED Can Lighting
- CAT6 Wiring
- Ring® Pro Video Doorbell
- Lutron® Caseta Wireless Smart Light Switch
- Z-Wave Schlage® Smart Entry Door Deadbolt Locks
- Honeywell® Lyric Pro WiFi Thermostat
- 220v Laundry Outlet or Gas
- USB/Outlet Combo in Kitchens
- Floor Outlet in Great Rooms (Except Plan 3)
- 320 amp Electrical Panel
- Recirculation Pump Pre-Wired
- Keyless Lighting at Attics

THE LATEST QUALITY CONSTRUCTION TECHNOLOGIES

- Engineered Pads with Concrete Slab Foundations
- Standard 4-Car Garages with Optional Attached RV Garage Expansion!
- 2" x 6" Exterior Frame Construction
- Fully-Enclose Building Envelope with Polyseal at All Penetrations
- Covered Backyard Loggias
- Central Air Conditioning & Forced Air Heating
- Low VOC Eggshell Sherwin Williams® Paint
- Flush Panel Modern Steel Garage Doors with Jack-Driven LiftMaster® Wall-Mounted Smart Garage Door Openers
- 40-Year Composite Shingle Roofing
- 10' Interior Ceilings
- Low E Dual-Pane Vinyl Windows
- Greenboard with 100% Silicon Caulking in All Wet Areas
- 90%+ Efficiency Furnace
- Tankless Water Heater
- Anti-Syphon Exterior Hose Bibb
- Standard Hot Water Recirculation
- Energy Saving Insulation
- 1-Year Builder Warranty
- 10-Year Construction Defect Warranty
- Xeriscape Front Yard Landscaping and Irrigation

THOUSANDS OF BUILDER & DESIGNER OPTIONS

- RV Garage
- Electrical, Wiring, & Lighting Fixtures
- Plumbing Fixtures & Finishes
- Optional Tankless Water Heaters
- Appliance Packages
- Multi-Panel Sliding Glass Doors
- Interior Millwork
- Cabinet Styles & Configurations
- Fireplaces
- Flooring, Countertops, & Tile
- And much more!



Contact Information

775-971-4204 | ShadowHills@RyderHomes.com | RyderHomes.com/ShadowHills
Sales Office Located at 11687 Sugarloaf Peak Drive, Sparks, NV 89441

