

Dawson



1,295 sq ft



3 bed



2 bath



a

traditional



b

craftsman



e

tudor



f

modern

FEATURES YOU'LL LOVE ABOUT THIS HOME

dual vanity in
primary suite

five-foot shower
in primary suite

40-inch upper cabinets
for extra storage

mud bench off the
garage entry

open-concept layout to connect
living room and kitchen



IDEAL
homes | neighborhoods®



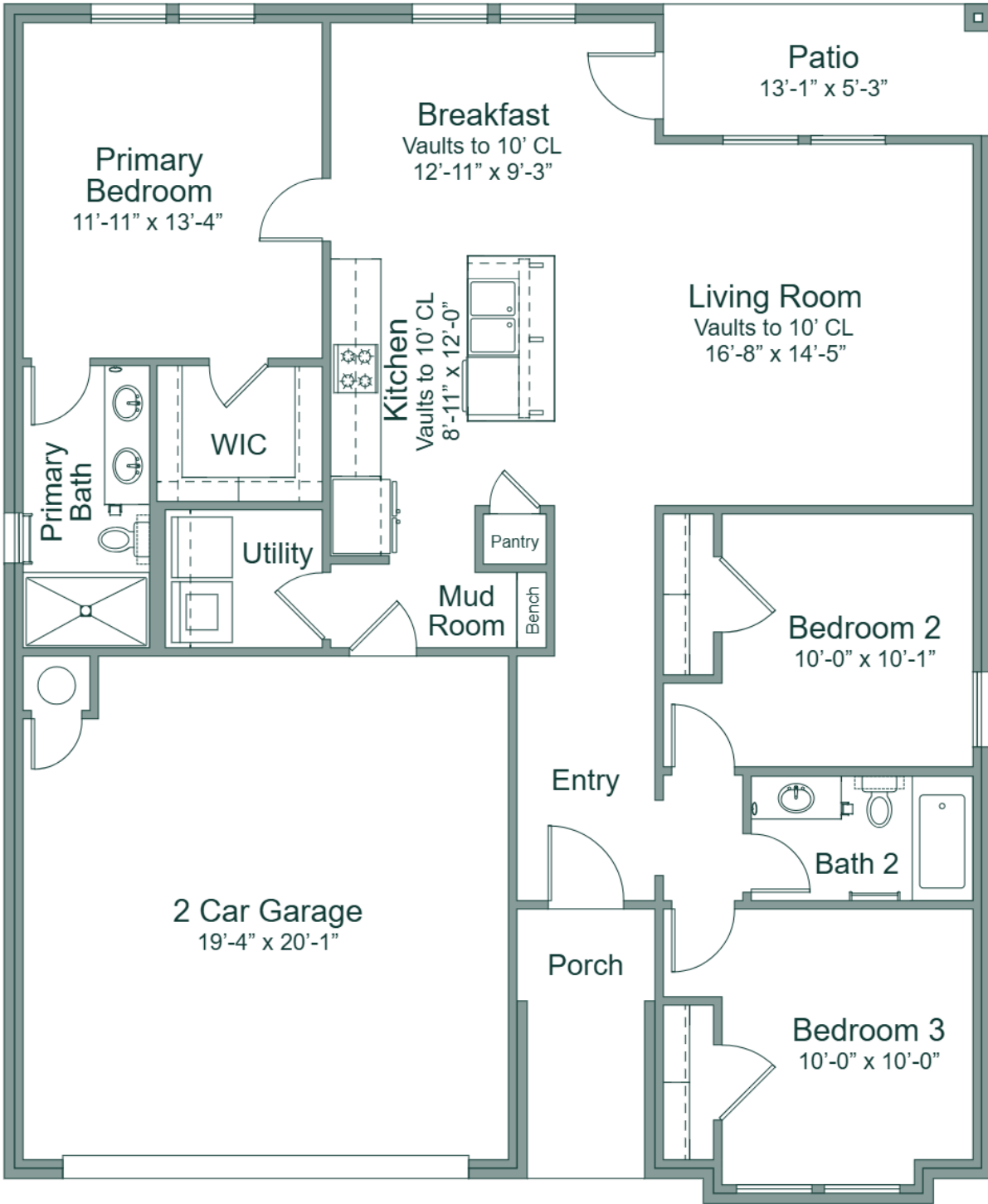
**HERE'S HOW WE DEVELOP
EVERY IDEAL FLOOR PLAN:**

We consider everything ...

- sight lines & traffic flow
- furniture placement
- usable space
- architectural details
- window placement & size for optimal lighting
- function & low maintenance needs

405.364.1152

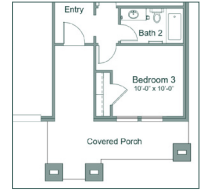
www.idealhomes.com



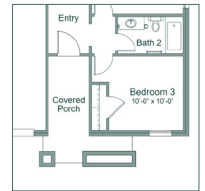
customize this plan



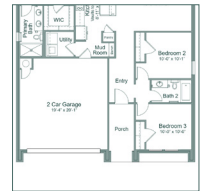
fireplace



porch b



porch e



porch f



Scan the code to view a **photo gallery & included features** for the Dawson floor plan