

MOVE-IN READY HOME - AVAILABLE IMMEDIATELY!

THE KENWOOD I

Lot 5 • 17225 Tom Fox Avenue, Poolesville, MD 20837

LIMITED TIME OFFER!

5 ⁷/₈% 30-YEAR FIXED RATE*

Plus **\$25,000 PAID CLOSING!**

(See Sales Consultant For Details)



This Luxurious New Home Features:

- 6,400+ Sq. Ft. of Finished Living Space
- 3.2 Acre Wooded Estate Homesite
- 6+ Bedrooms and 6 Full Baths
- Oversized 4-Car Garage
- Clean & Green high energy efficiency and cleaner indoor air
- 3 Finished Levels of Luxury



KettlerForlinesHomes.com

*Ability to make changes to builder's selections are based on the stage of the home at time of contract.

THE KENWOOD I

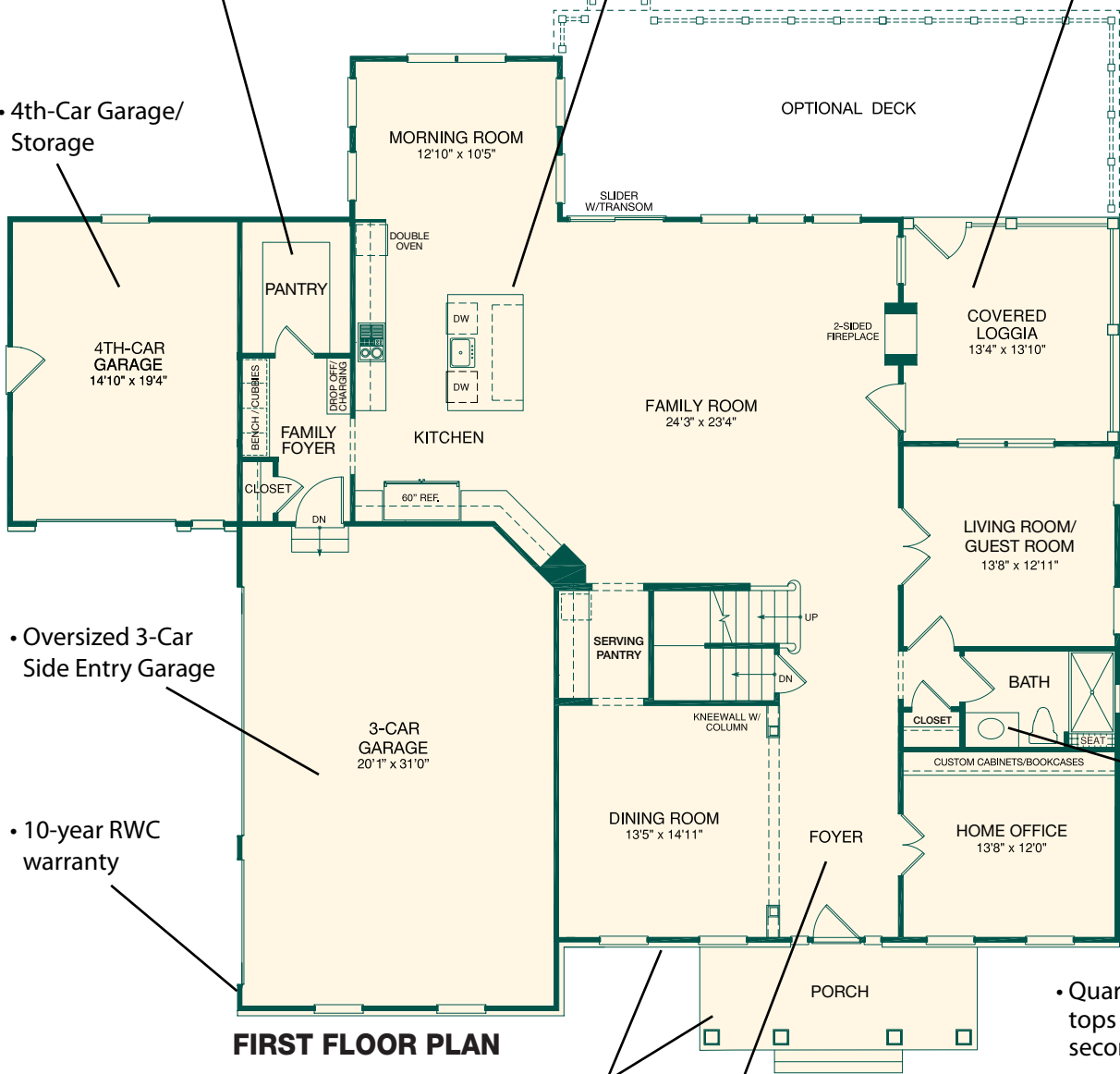
LOT 5 • 17225 TOM FOX AVENUE, POOLESVILLE, MD 20837

- Chef's gourmet Kitchen with Quartz counter tops, Timberlake Cabinetry, Viking gas cooktop, KitchenAid double wall ovens, dual dishwashers, vented Zephyr chimney hood and custom 60" dual refrigerator/freezer

- Family Foyer "Drop Zone" Featuring custom bench with cubbies and huge walk in storage pantry

- Covered screened-in Loggia with 2-sided fireplace with stone face

- 4th-Car Garage/Storage



FIRST FLOOR PLAN

- Oversized 3-Car Side Entry Garage

- 10-year RWC warranty

- Quartz vanity tops in all secondary Baths

- Stone Front and 3/4 Porch

- Wider plank real hardwood 3/4" thick tongue-and-groove flooring throughout the first and second floor



THE KENWOOD I

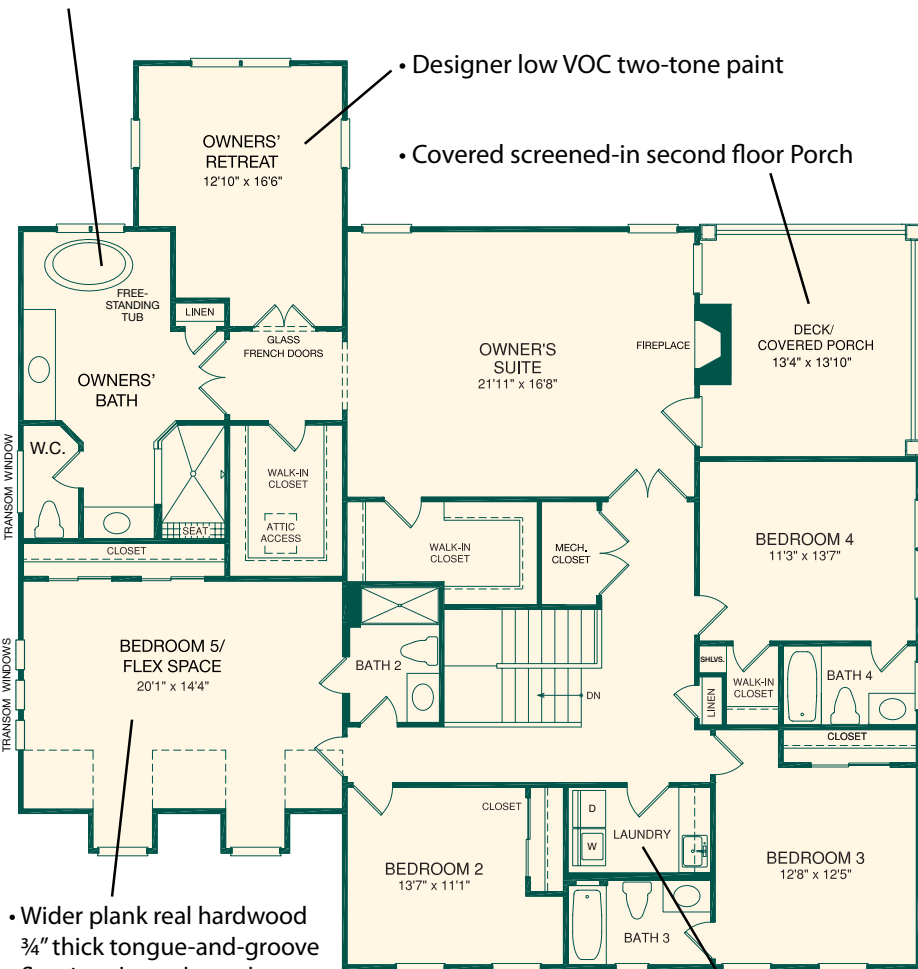
LOT 5 • 17225 TOM FOX AVENUE, POOLESVILLE, MD 20837

Plus:

• Smart Home Package*, Including

- WiFi enabled* Honeywell® programmable thermostats
- WiFi enabled* Liftmaster® garage door openers with remote for each garage door
- WiFi-enabled HD Ring Video Doorbell Camera
- WiFi-enabled Schlage® front door lock
- USB Charging Ports with Electrical Outlets
- Structured Data Stream Wiring Package including High-Speed/Video Connectivity

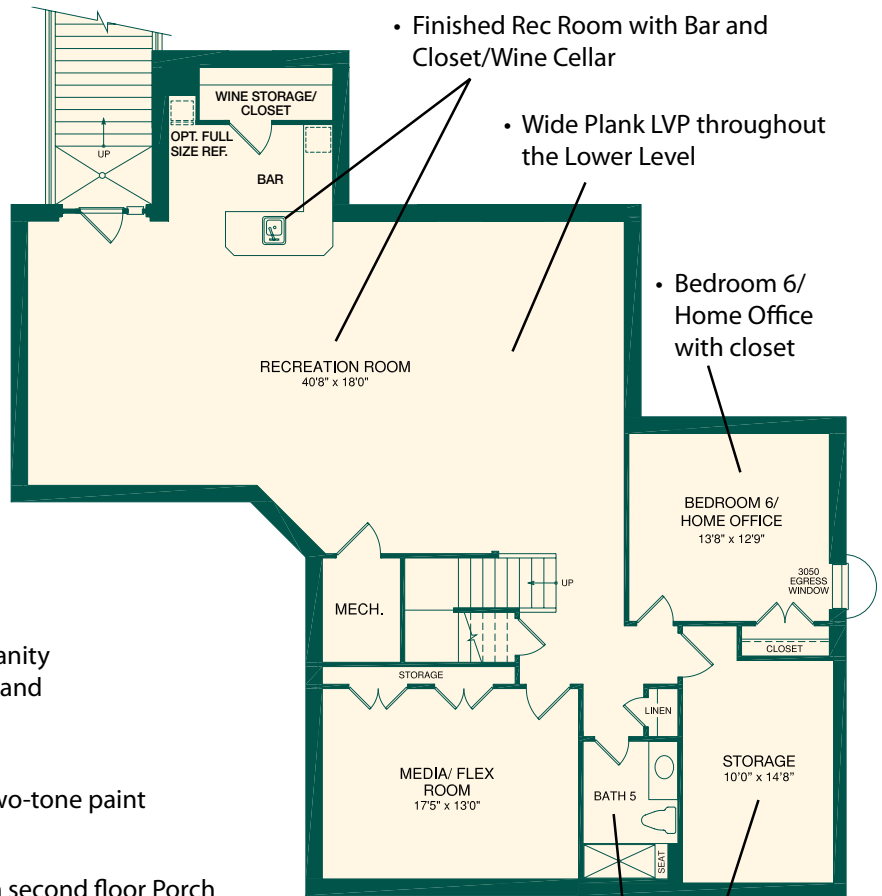
- Owner's Suite with two huge walk-in closets, Quartz Vanity Tops, elegant heavy glass frameless shower enclosure and free-standing soaking tub in Owners' Bath



SECOND FLOOR PLAN

- Wider plank real hardwood ¾" thick tongue-and-groove flooring throughout the first and second floor

- Second floor Laundry with cabinetry & sink



LOWER LEVEL PLAN

- Finished Rec Room with Bar and Closet/Wine Cellar
- Wide Plank LVP throughout the Lower Level
- Bedroom 6/ Home Office with closet
- Finished Storage Area
- Full Bath with Shower and seat

~~\$2,048,255~~

SPRING SAVINGS PRICE:

\$1,879,650



*Purchaser to provide internet and Wi-Fi service as well as download smartphone app.

Foxwood Crossing is a Unique Enclave of 5 Luxury Homes Featuring:

- Naturally beautiful 2 acre+ wooded homesites located in historic, family-friendly Poolesville, MD
- Home designs from 3,530 to 7,852 sq. ft.
- Up to 8+ Bedrooms, 8 Baths
- Up to 5-Car Garages Plus Storage Available
- Multigenerational/Family Guest Suite Plans available
- Multiple Home Offices and Flex Space
- Smart Home Automation and Structured Wiring included
- Clean & Green high energy efficiency and cleaner indoor air
- Award-winning schools, including Poolesville High School – Ranked #1 in Maryland several years in a row!
- Conveniently located with access to major commuter routes and transit
- Award-winning Kettler Forlines Homes quality craftsmanship and attention to detail

**Contact George Neill
at 301-807-8266 or
gneill@kettlerforlineshomes.com
for an appointment.**

Lot 5 Site Plan



Area Map



**Model Home & Design Center located at 17919 Elgin Road, Poolesville, MD 20837.
Open Daily 11am to 5pm or by appointment.**

At Kettler Forlines Homes, the choice is yours. We believe in offering a comprehensive selection of alternates and options so that our new homes may be personalized to each owner's individual desires. Because of continuing changes in products, building codes, and availability of materials, builder reserves the right to incorporate new and improved design features at any time without notice or to use equivalent materials. Kettler Forlines, Inc. – Maryland Home Builder Registration #186 – March 7, 2024

