

The Norwood Traditional

Ready Home for Sale







Landscaping not included.
Not actual home, but similar plan.

\$699,900*

Immediate Occupancy

Settlement at Hoods Creek (Lot 98)
2402 Hoods Creek Path
Mount Pleasant, WI 53406

-  4 Bedrooms
-  2.5 Bathrooms
-  2,372 SF
-  3 Car Garage (extended depth)

Directions:

I-94 exit Hwy C/Spring Street. East on Hwy C/Spring Street. Left on Airline Road. Left on Gittings Road. Right on Settlement Trail into neighborhood.

*Price subject to change without notice.



KITCHEN FEATURES

Designer Kitchen featuring stained cabinetry with crown molding, soft close doors/drawers & convenient roll-out trays in island
Quartz countertops, tile backsplash, island w/ flush snack bar
GE® Designer kitchen appliance package w/built-in microwave, dishwasher, slide-in gas range, chimney style hood & built-in look French door refrigerator in slate finish

MAIN LEVEL FEATURES

16'x12' sunroom
Transom windows in great room
Select jamb & cased windows
Luxury vinyl plank flooring in foyer, kitchen, nook, sunroom, office, great room, powder room, laundry/mudroom, & bath 2
Gas fireplace w/ stacked stone surround & boxed mantel w/ returns
Double swing glass doors in office
Separate laundry & mudroom
Built-in lockers in mudroom
Laundry room w/ cabinets & folding table
4 ¼" base & 3 ½" casing

MASTER SUITE FEATURES

Two large walk-in closets w/ melamine shelving
Double bowl vanity
4'x5' tiled shower w/frameless glass door, wall to wall tiled shampoo shelf, & tiled bench
Tile flooring
Separate commode room

ADDITIONAL FEATURES

Concrete driveway & walkway
Walk-in closets in bedroom 2 & 3
James Hardie® fiber cement lap siding, trim, & corner boards & additional stone to front elevation
Extended 3 car garage
Insulated overhead garage doors & belt-driven ultra quiet garage door opener
Solid core doors
Basement bathroom plumbing rough in
Egress windows
Pella® windows
Dura Supreme® Cabinets
Moen® Faucets & Kohler® Toilets
Maxim® Light Fixtures
2x6 Construction
Focus on Energy Certified
Builder Warranty Included

Floor Plan on Other Side →



ASK RYAN!

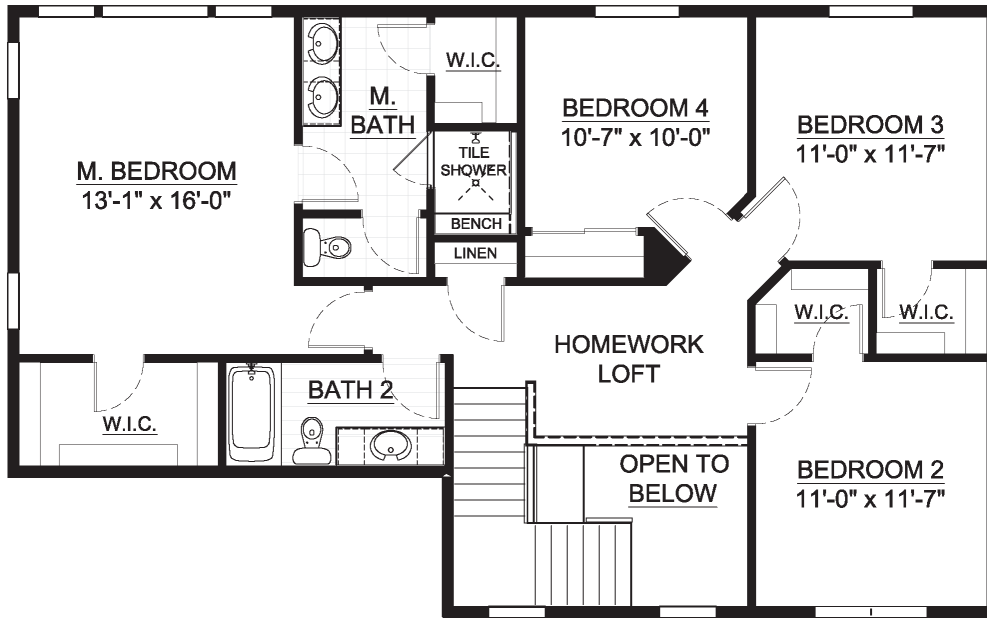
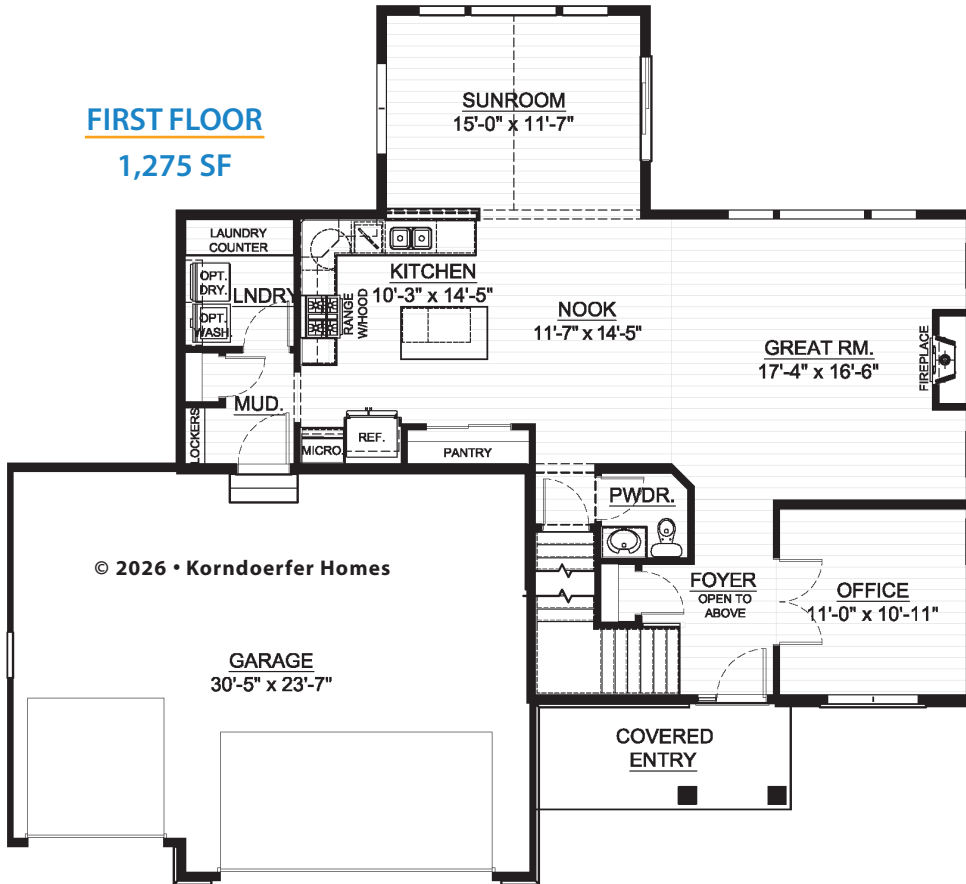
Online Sales Consultant
262-884-9551
sales@korndoerferhomes.com



The Norwood Traditional Floor Plan

FIRST FLOOR

1,275 SF



SECOND FLOOR

1,097 SF



ASK RYAN!

Online Sales Consultant
262-884-9551
sales@korndorferhomes.com

