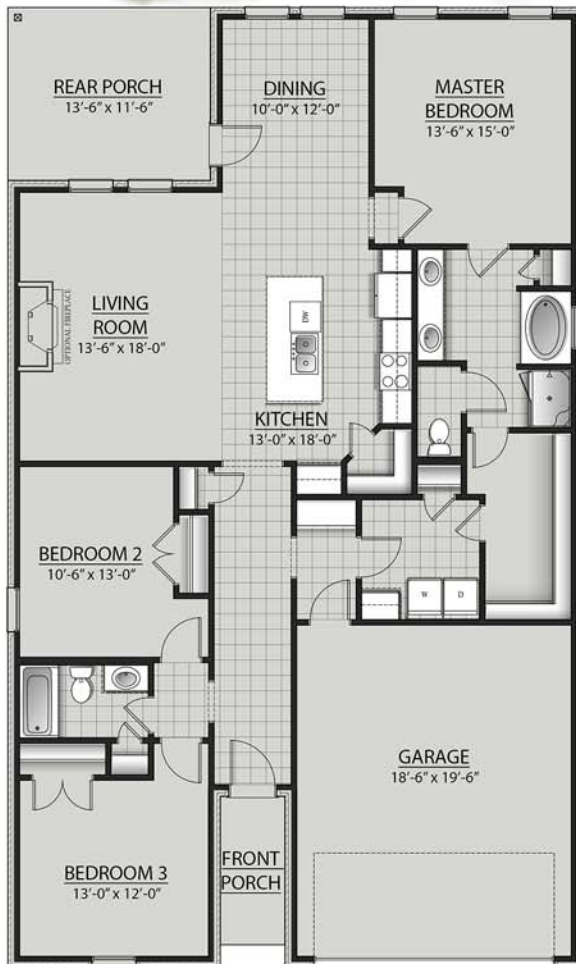


# THE TRILLIUM J IV PLAN



## LIVING AREA

1858 Square Feet

## TOTAL AREA

2523 Square Feet

## FEATURES

- Open Floor Plan
- 3 Bedrooms, 2 Bathrooms
- Two Car Garage
- Brick and Siding Exterior
- Recessed Can Lighting in Kitchen
- Walk-In Pantry
- Double Master Vanity
- Separate Master Shower



Floor plans and elevations are subject to change without notice. Elevations and renderings are artistic conceptions and may not accurately depict home styles. Windows, doors and plan configurations are subject to change per elevation. Information contained in this flyer is subject to errors, omissions, changes, withdrawals and prior sales without notice.