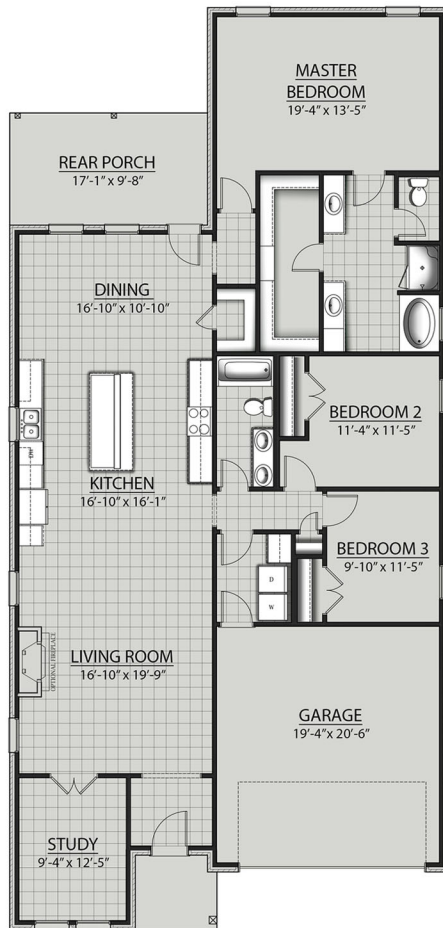


THE BOYANCI B PLAN



Living Area

2137 Square Feet

Total Area

2777 Square Feet

Exterior Features

- Brick Exterior
- Covered Rear Porch
- Two Car Garage

Interior Features

- Open Floor Plan
- Three Bedrooms, Two Bathrooms
- Recessed Can Lighting in Kitchen & Living Room
- Study
- Double Master Vanity
- Master Garden Tub
- Separate Master Shower
- Master Walk-In Closet



Floor plans and elevations are subject to change without notice. Elevations and renderings are artistic conceptions and may not accurately depict home styles. Characteristics, including but not limited to windows, doors, plan configurations and orientations are subject to change per home site. Information contained in this flyer is subject to errors, omissions, changes, withdrawals and prior sales without notice.