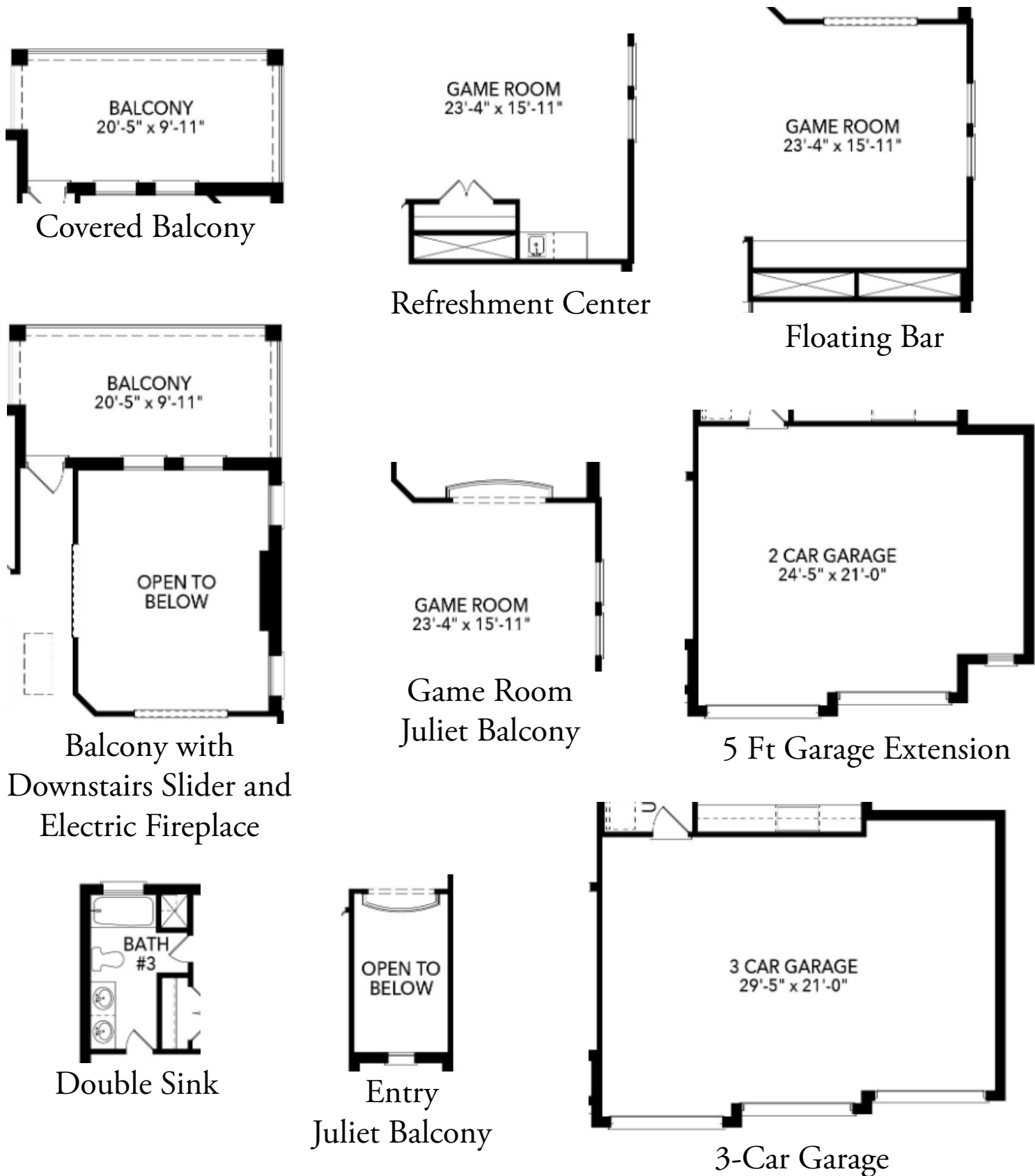


The Monte Carlo



Elevation A



Elevation C



Elevation F

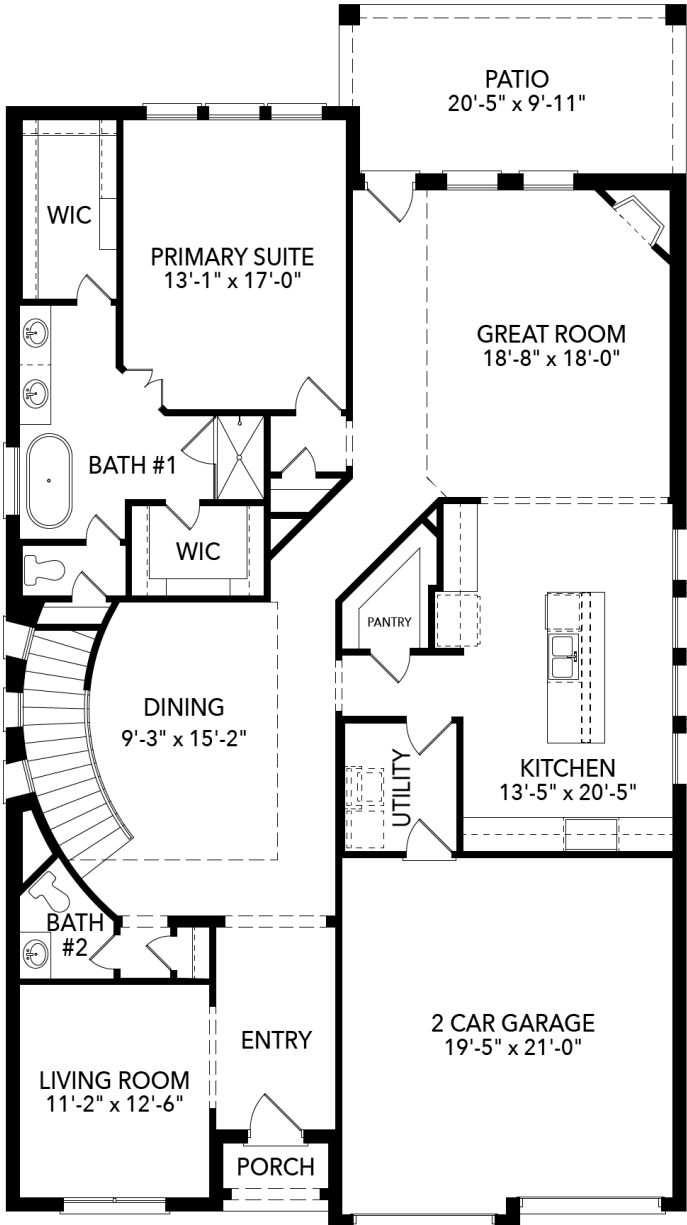


Elevation G

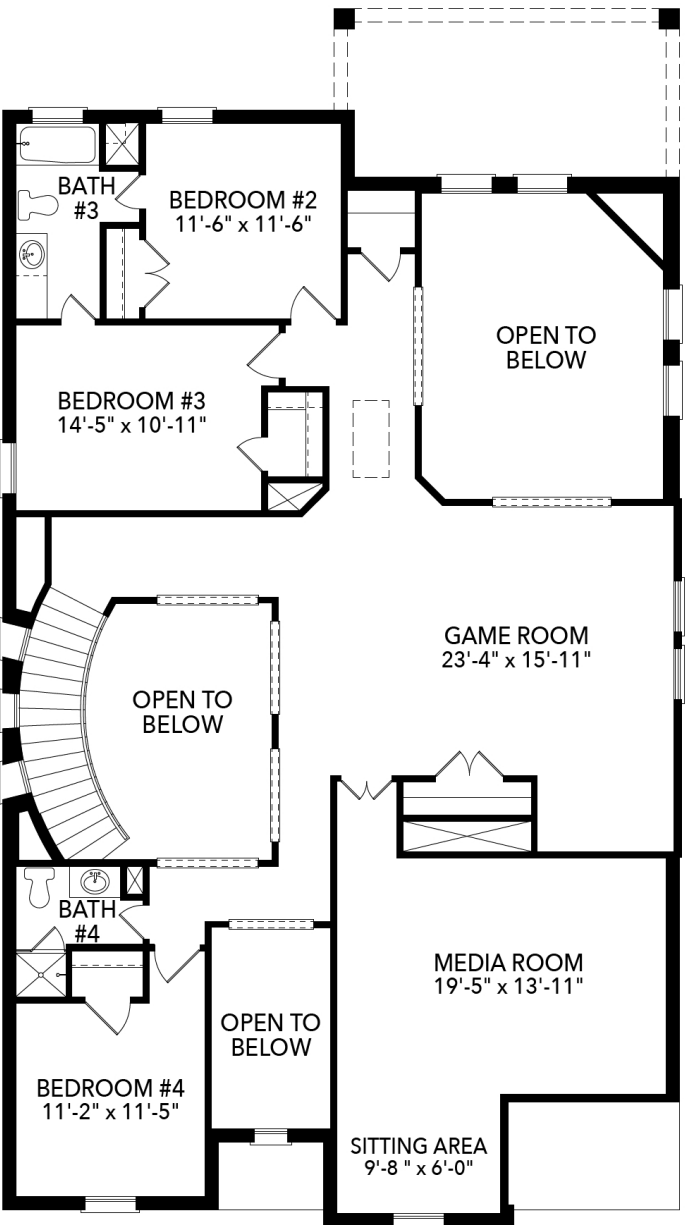


Elevation H

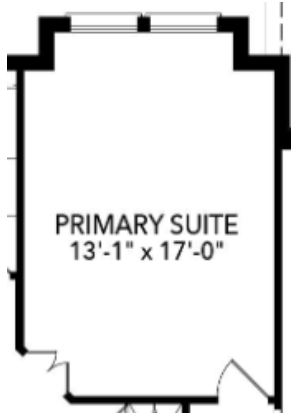
4 Bedrooms | 3.5 Bathrooms | 2-Car Garage | 3892 Sq Ft



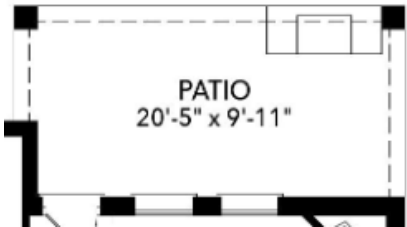
First Floor



Second Floor



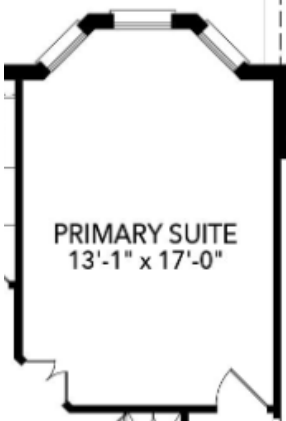
Box Bay Windows



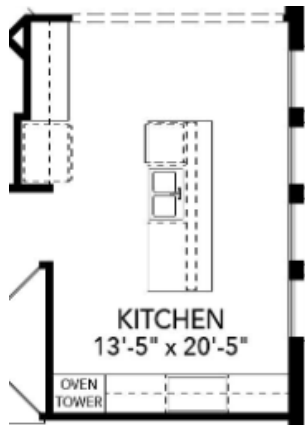
Outdoor Grill



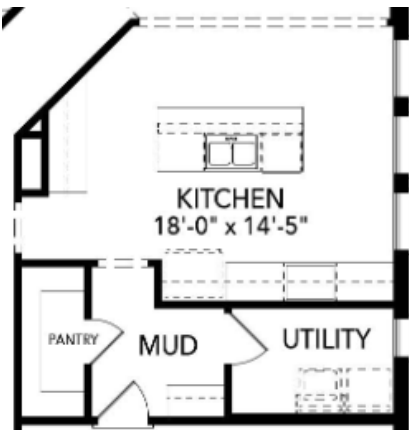
Patio Slider and Electric Fireplace



Bay Windows



Oven Tower



Alternate Kitchen



Bedroom 5 and Bath 5



Study ILO Living



Study Built-Ins



Utility Sink

All discounts and/or incentives are subject to credit approval and use of builder's preferred lender and title company. Floorplans and renderings are artist's conceptions. Dimensions are approximate. Floor plans, room sizes, exteriors, and standard features may vary. Sandlin Homes reserves the right to modify the plan and specifications without notice or obligation. Copyright 2017 Sandlin Homes - All Rights Reserved

