



Craftsman Elevation

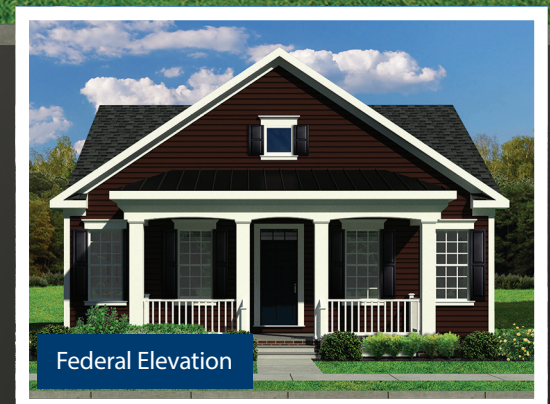
THE BELVILLE

Features:

- 2-3 bedrooms
- 2-3 full baths
- 2-car garage
- Full basement
- 9-foot first-floor ceilings
- First-floor owner's bedroom suite



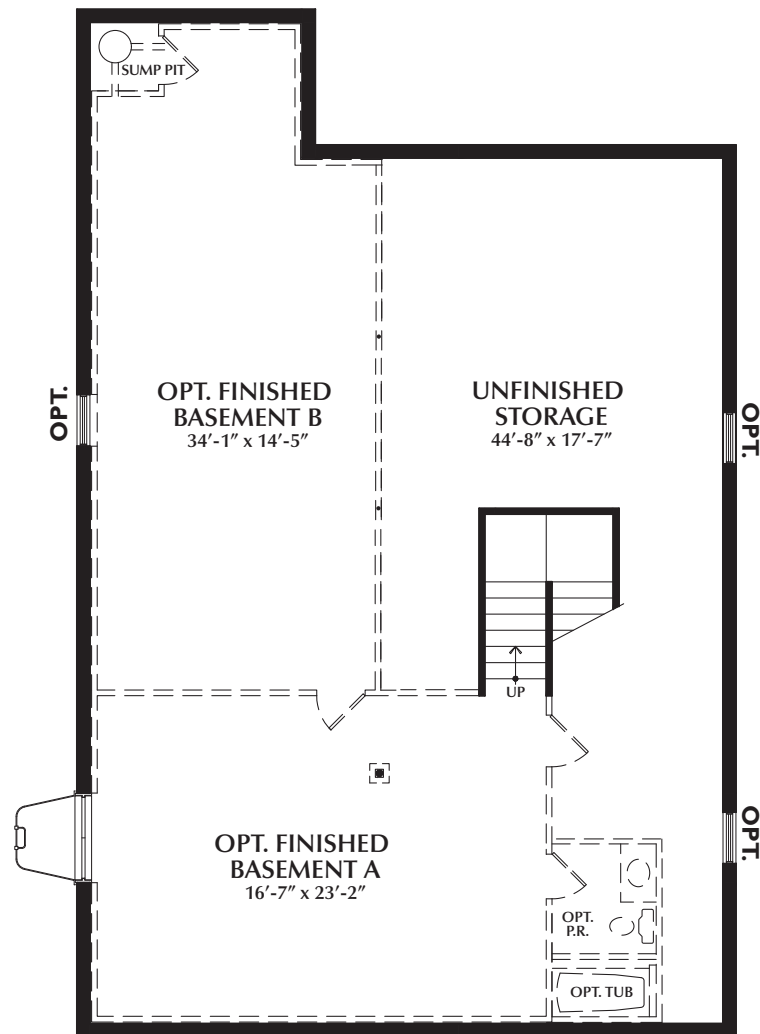
Classical Elevation



Federal Elevation



Basement Plan



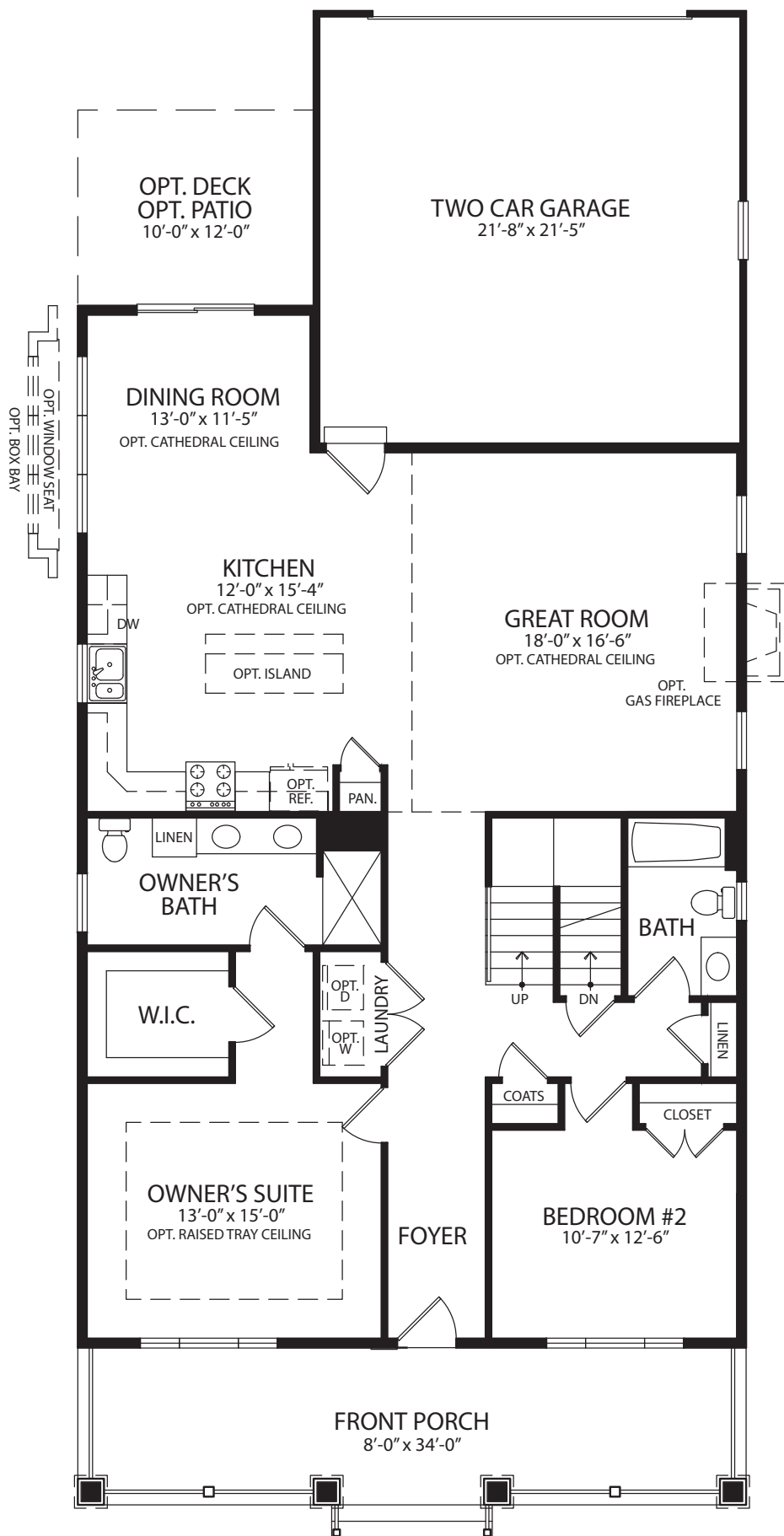
REV. 1-9-24

Details and dimensions shown on these floor plans are approximate and subject to change. Illustrations are artists concepts and may vary in detail from the actual plans and specifications. The right is reserved to make changes without notice or obligation. Floor plans in brochure represent Craftsman elevation. Classical and Federal elevations have walls, windows, and room sizes that vary slightly. Please consult the community sales manager for alternate floor plans, options, and features.



First Floor Plan

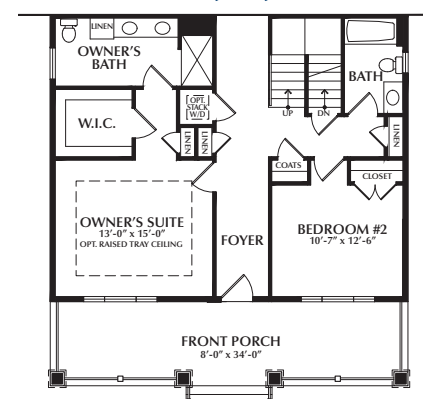
Shown on Craftsman Elevation



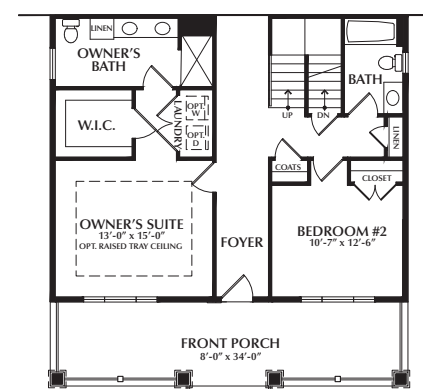
Optional Sunroom



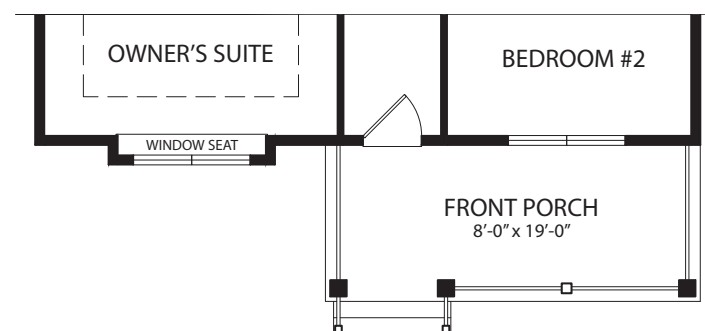
Alt. Laundry Layout #1



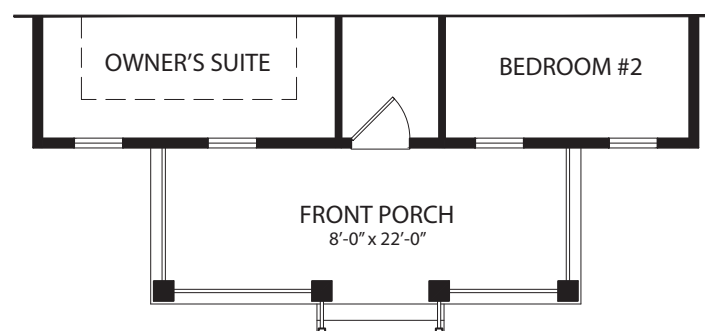
Alt. Laundry Layout #2



Classical Elevation Porch

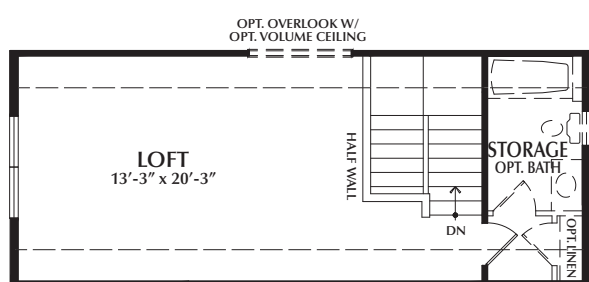


Federal Elevation Porch

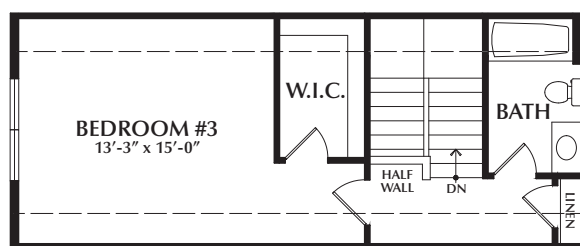


Second Floor Plan

Standard Loft



Optional 3rd Bedroom with



Optional 3rd Bedroom with Bath and Loft

