



CALIBER HOMES

CHARACTER REDEFINED

# 555 Aermotor



## The Patton

### PROPERTY FEATURES:



4 Bedroom



3.5 Bathroom



3 Car



3068 Sq Ft



Full Foam Insulation

### ABOUT:

"If everyone is thinking alike, then somebody isn't thinking."

-George S. Patton

We definitely think outside the box at Caliber Homes TX and our Patton Plan is no exception. It boasts a split floor plan including a game room, study and separate dining area that flows perfectly into the kitchen and main living area.

### CONTACT DETAILS:



817-360-0249



[sales@caliberhomestx.com](mailto:sales@caliberhomestx.com)



[www.caliberhomestx.com](http://www.caliberhomestx.com)

All plans and elevations are subject to change without prior notice. All Caliber Homes floor plans & elevations are copyrighted. Caliber Homes will enforce copyright laws to their fullest extent. All plan numbers are approximations of square footage and may vary with alternate elevations.

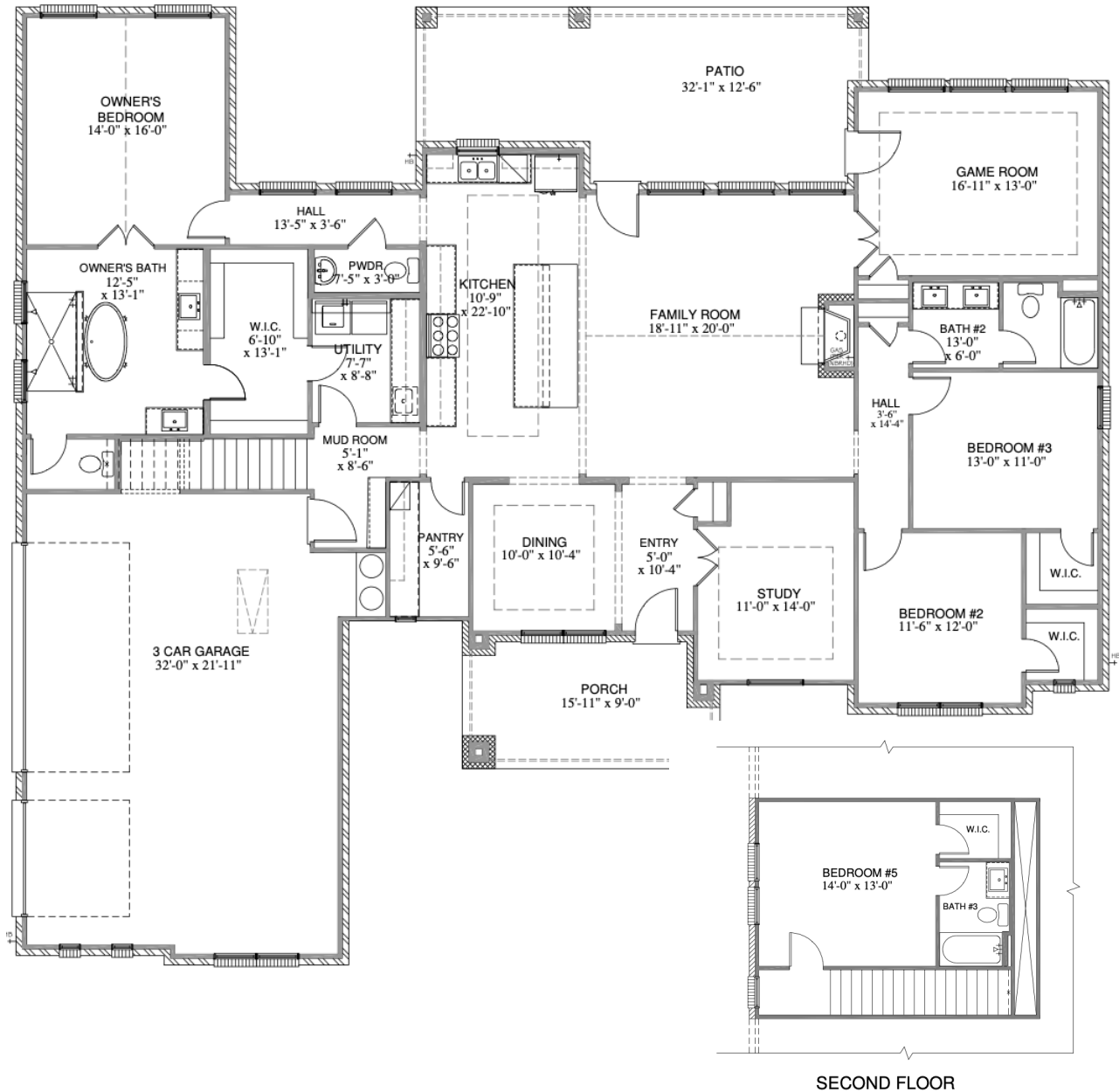
Please note: In an effort to continually improve our floor plans and elevations, Caliber Homes reserves the right to make alterations to the designs without prior notice.



CALIBER HOMES

CHARACTER REDEFINED

# 3068 SQ. FT THE PATTON



## SQUARE FOOTAGE TOTALS

|      |                 |
|------|-----------------|
| 2753 | 1ST FLOOR       |
| 315  | 2ND FLOOR       |
| 511  | COVERED PORCHES |
| 770  | GARAGE          |
| 4349 | TOTAL A.U.R.    |

All plans and elevations are subject to change without prior notice. All Caliber Homes floor plans & elevations are copyrighted. Caliber Homes will enforce copyright laws to their fullest extent. All plan numbers are approximations of square footage and may vary with alternate elevations.

Please note: In an effort to continually improve our floor plans and elevations, Caliber Homes reserves the right to make alterations to the designs without prior notice.