



# STONE BRIDGE HOMES NW



*Autumn Sunrise*



**BEDROOM &  
FULL BATH  
ON MAIN!**

**8831 SW PEORIA LANE  
HOMESITE 306  
PLAN 402A FH**

## ABOUT THE PROPERTY

The main level features a versatile den/5th bedroom, a full bath, and a great room highlighted by a gas fireplace with a floating box-beam mantle. The gourmet kitchen offers quartz slab countertops, undermount sinks in both the kitchen and bathrooms, mission-style stained alder cabinetry, a walk-in pantry, and stainless-steel Whirlpool appliances—including a 5-burner gas cooktop, double wall ovens, built-in microwave, dishwasher, and chimney-style hood. Upstairs, enjoy an expansive primary suite with a generous walk-in closet and a spa-like bath featuring all tile shower and soaking tub. Three additional bedrooms and a spacious bonus room provide ample living space. Front and rear landscaping, fencing with a gate, sprinkler system on timer. Earth Advantage Certified!

## FEATURES

- ✓ 5 BED / 3 BATHS
- ✓ 2,988 SF HOME
- ✓ 2 CAR PLUS SHOP GARAGE
- ✓ DEN/5TH BEDROOM ON MAIN
- ✓ BONUS ROOM ON UPPER
- ✓ GENEROUS PRIMARY SUITE
- ✓ CENTRAL AIR CONDITIONING

# \$849,860

**RMLS# 252428007**



**503.746-6215**

GaryC@stonebridge-realty.com



**MODEL HOME:**

**9345 SW SALINAN STREET  
TUALATIN, OR 97062**

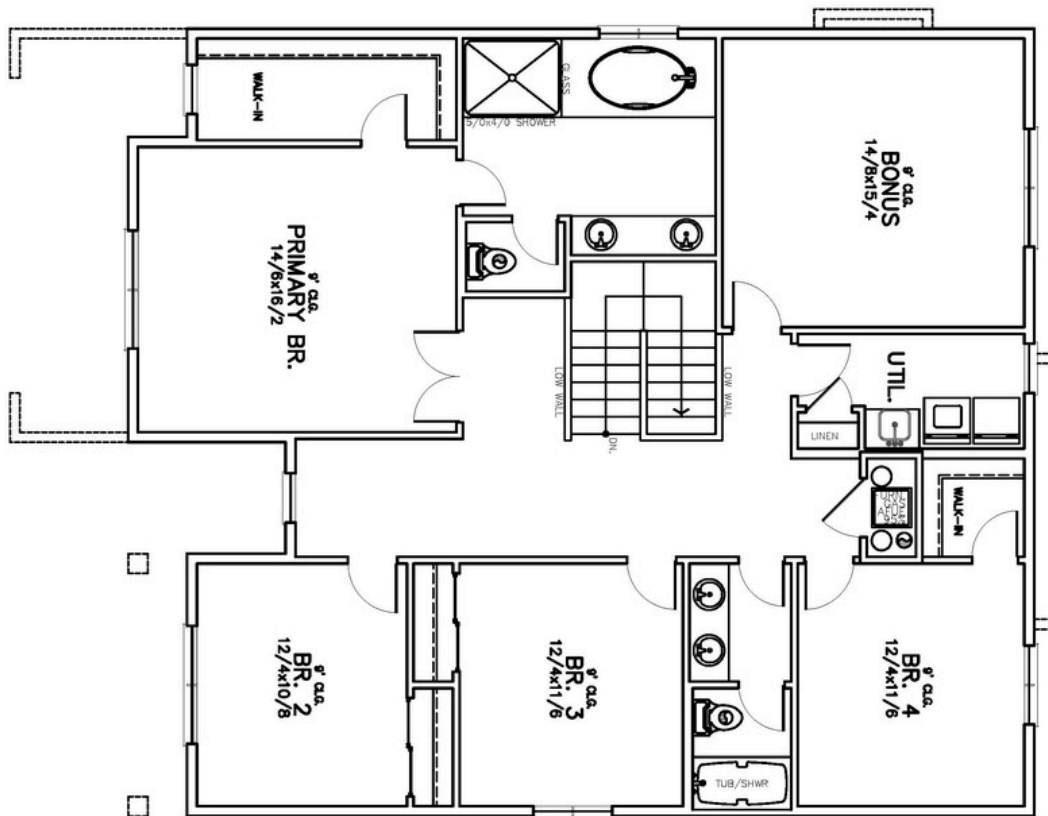
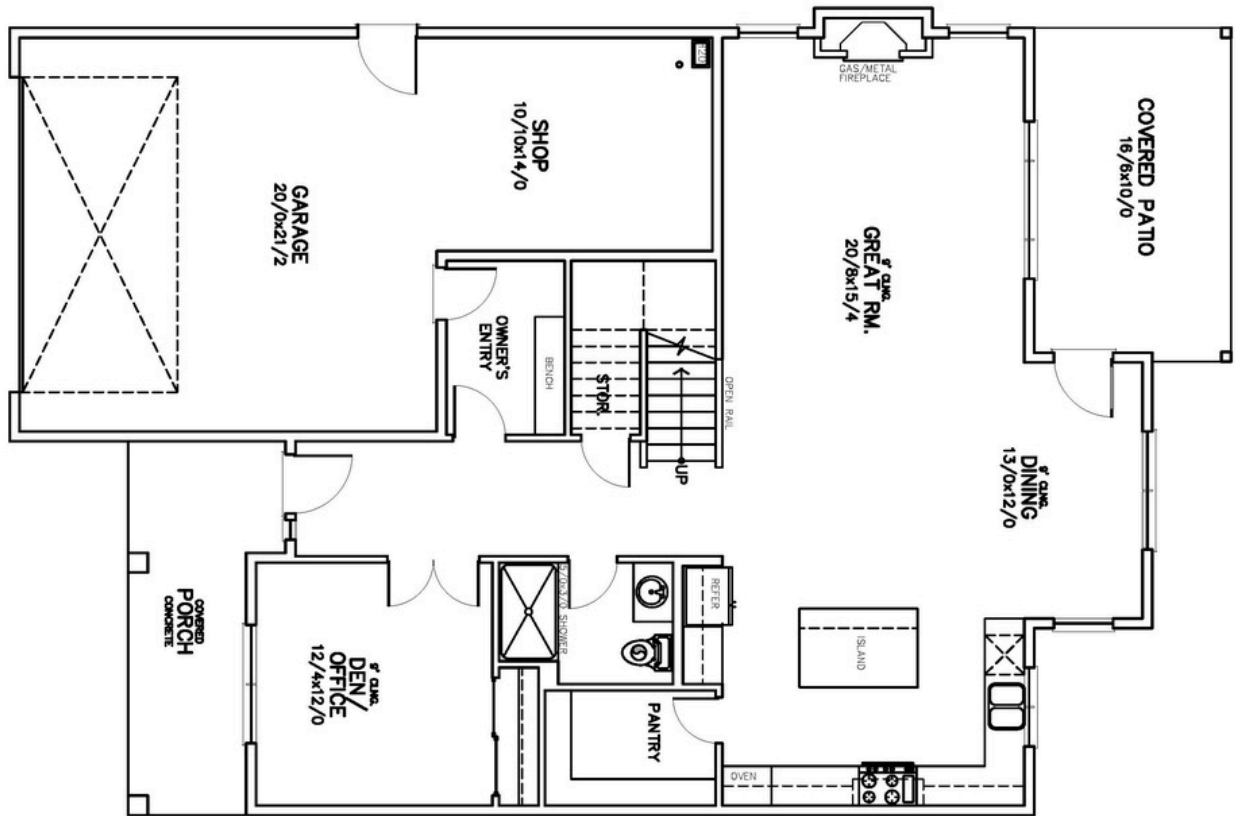
Prices, features, and incentives are subject to change. Photos and drawings are for illustrative purposes only and actual details may vary.

Please see a sales representative and the sale agreement for additional information. CCB#173318



# HOMESITE 306

8831 SW PEORIA LANE  
TUALATIN OR, 97062



*Autumn Sunrise*