

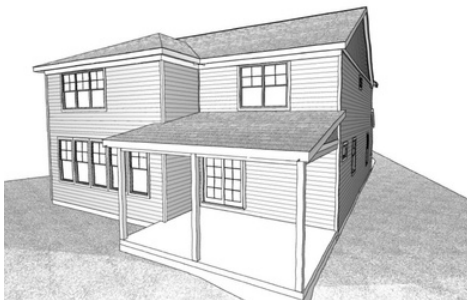
The Wilshire

TODD
Homes llc.com
Affordable Luxury

BY TODD HOMES LLC



THE WILSHIRE FEATURES:



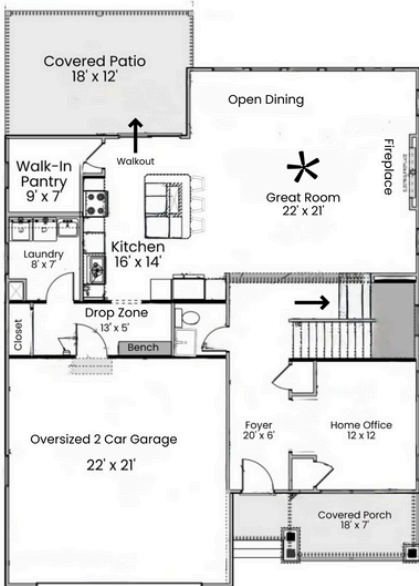
- Custom, Modern Craftsman at 3350 SF with 4/5 BR & 3.5/4.5 BA
- An Open-Concept Plan, Accentuated by Soaring Ceilings, Fosters Connectivity Throughout the Living Spaces
- Private Primary Suite has a Walk-In Closet & Adjoining Spa-Like Bath with a Walk-In Shower, Quartz Topped Vanity & Dual Sinks
- Expansive 2 Story Great Room Flows Easily Into the Kitchen and Walks Out to a Large, Covered Patio for Outdoor Enjoyment
- 2nd Floor Loft & a Nanny/Guest Suite with a Full Bath
- Spacious, Upscale Kitchen With Granite Countertops, Island, Soft Close Shaker Cabinetry & Stainless Steel Appliances
- Beautiful LVT Flooring In All Shared Living Spaces
- Lower Level With Full Bath Rough-In & Optional Egress For Future Living Spaces
- Optional Finished Lower Level with Full Bath, Bedroom, Recreation Room & Home Office/Gym

 **5**
Bedrooms

 **4.5**
Bathrooms

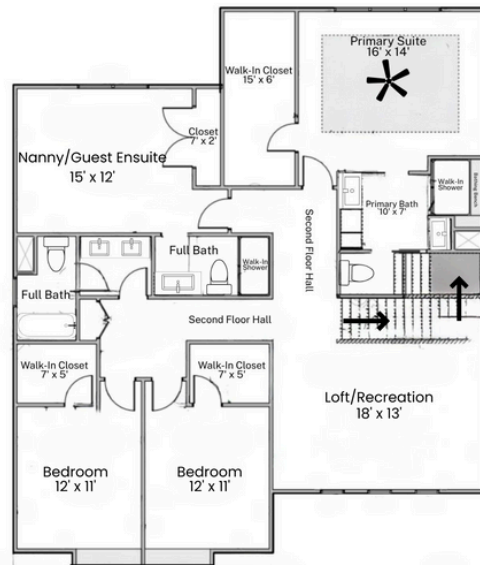
 **2**
Garage

 **3350**
Square Feet

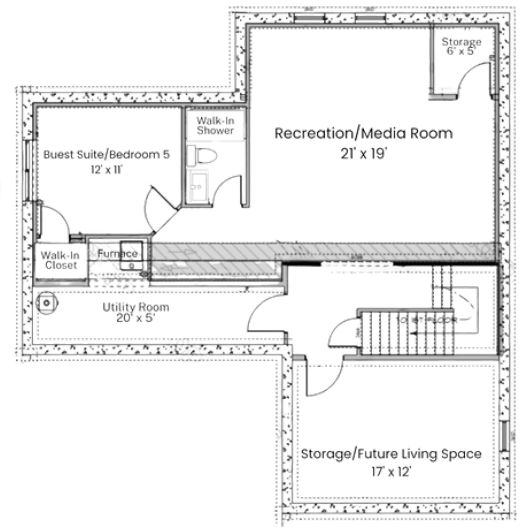


First Floor

First Floor



Second Floor



Optional Lower Level

Copyright 2025 Todd Homes LLC. All rights reserved. Please note that floor plans, tours & photos are intended for illustrative purposes only and cannot be used for building or design purposes. Sizes and dimensions provided are approximate and not guaranteed. Floor plan may include upgrades; please ask your Sales Professional for details.