



AVONLEY HOMES

3030 TELLER DRIVE



AUSTIN'S COLONY NEIGHBORHOOD

4 BDRM | 3 BATH | 2100 SF

Making her debut as one of Avonley Homes' newest plans, the "Laurel" showcases the perfect idea of an open concept living area that is an entertainer's dream. Where natural light is in abundance, this 4 bedroom, 3 bath home features a beautiful kitchen with ample storage and the perfect workspace. Walk into the master suite and enjoy the spacious walk-in closet, walk-in shower, and separate garden bath tub. The covered back porch off of the living area and the flex room both provide additional living spaces to escape to. Design features include built-in mudroom cabinetry, granite countertops, stainless appliances, and so much more! Fall in love with this home and Come Home to Avonley!

FEATURES:

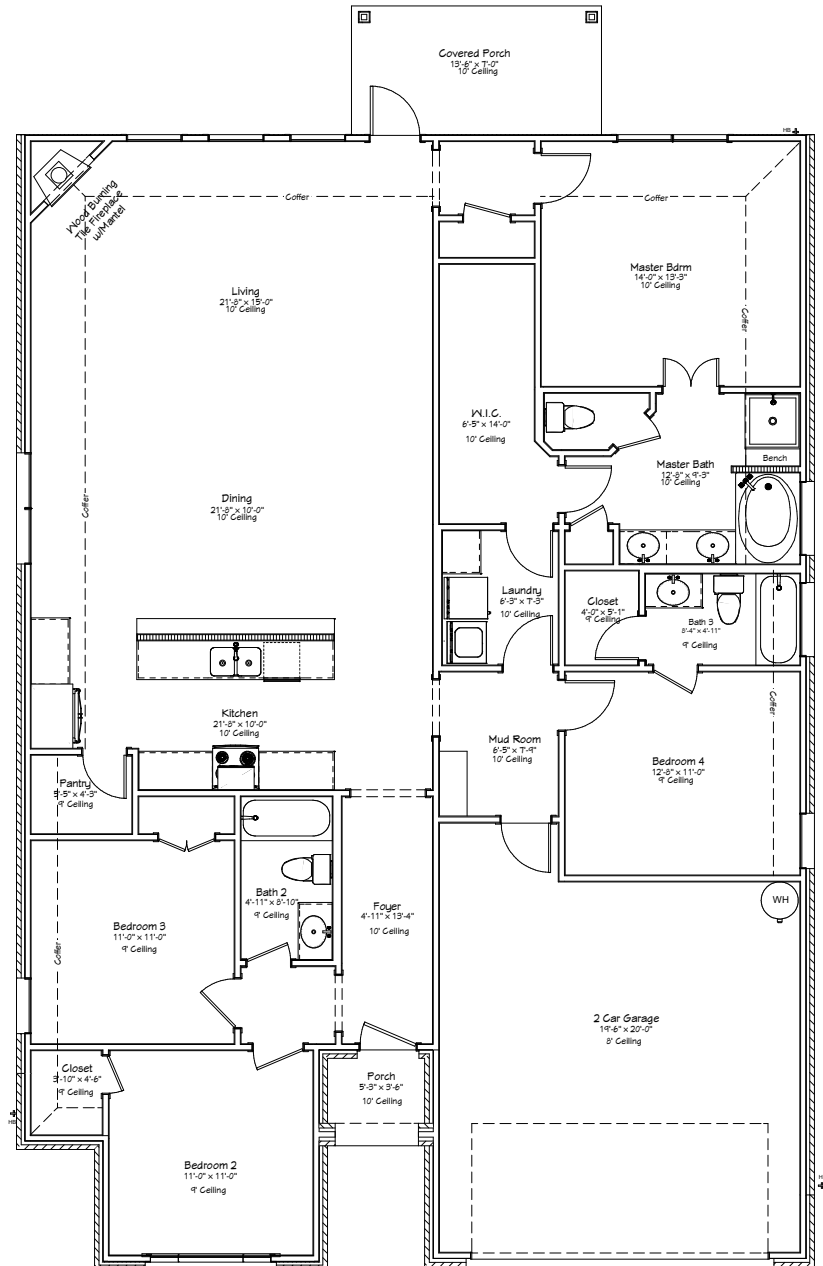
Mudroom Cabinetry | Granite Countertops
Wood Burning Fireplace | Covered Back Porch | Stainless Appliances

COME HOME TO AVONLEY



Avonley Homes
 979-321-7200
 info@avonleyhomes.com

3030 TELLER DRIVE



4 BDRM | 3 BATH | 2100 SF

WWW.AVONLEYHOMES.COM

COME HOME TO AVONLEY | Avonley Homes is committed to giving families the home of their dreams. From simple comfort to expert craftsmanship, we promise you will be proud to call our house your home.