

REECE HOMES

5664 MILL WATER COURT



WINDMILL HILL NEIGHBORHOOD

4 BDRM | 3.5 BATH | 2850 SF

The “Elizabeth” floor plan is one of the most popular Reece Homes layout with its perfect combination of functionality and design. The game room, study nook, and Reece Homes’ signature mudroom make this generous house feel like home. A beautiful u-shaped kitchen with a large island and a wall of windows looking out into the front, expand the feel of this plan. A restful master suite and lovely porches finish out the home.

FEATURES:

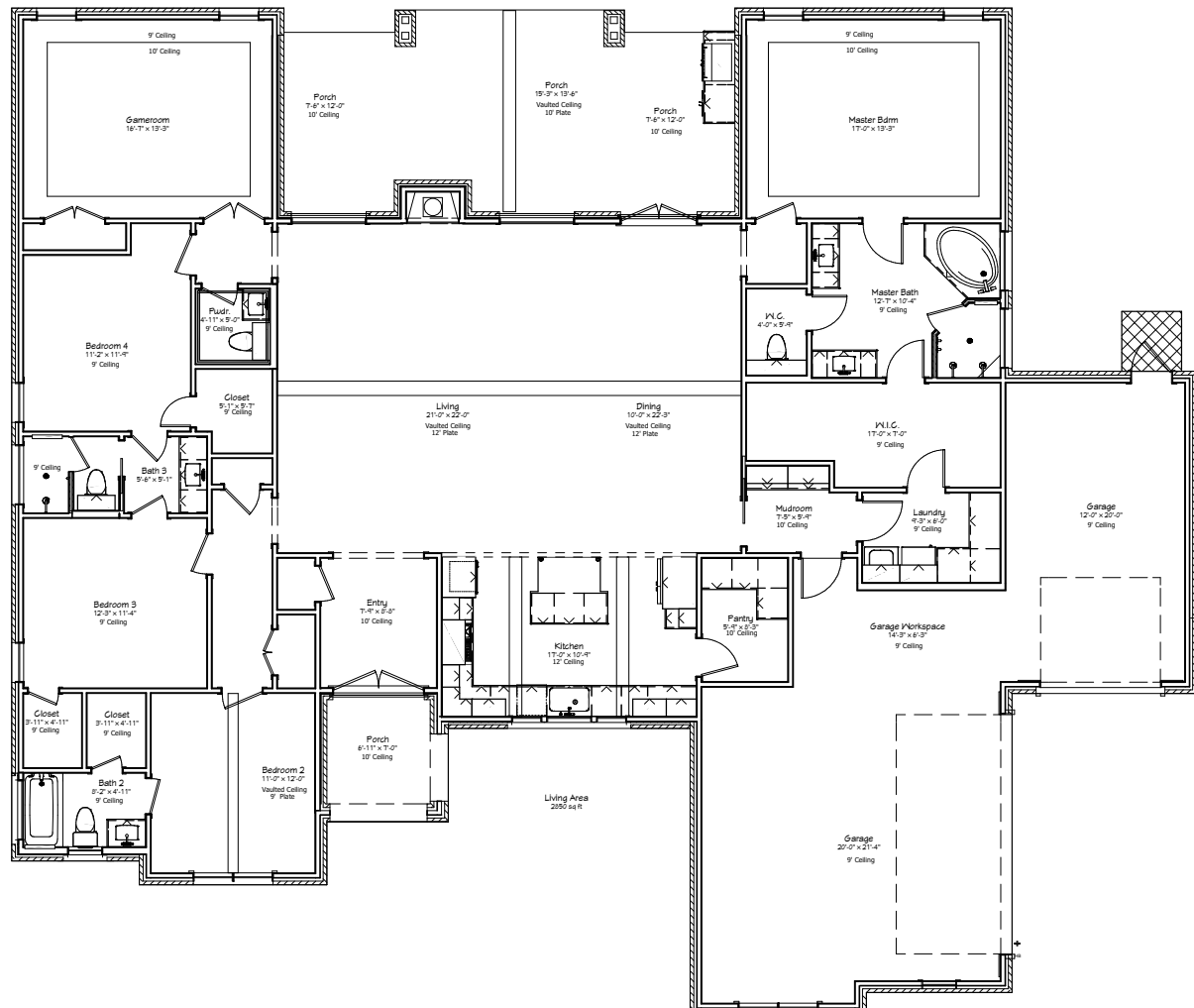
Custom Cabinetry | Quartz & Granite Countertops
Hardwood Flooring | Stainless Appliances | Custom Design Elements

Come Make Our House, Your Home.



Reece Homes
979-635-4800
info@reece-homes.com

5664 MILL WATER COURT



4 BDRM | 3.5 BATH | 2850 SF

Built the way we live | At Reece Homes we take great care in personalizing every home to meet each family right where they are. Truly unique, the Reece Homes building experience provides in house drafting, personalized design assistance, and constant communication throughout construction.

WWW.REECE-HOMES.COM