



AVONLEY HOMES

3238 WESLEY LOOP



RUDDER POINTE NEIGHBORHOOD

3 BDRM | 2 BATH | 1725 SF

Discover the charm of the newly redesigned Rose Plan by Avonley Homes—where comfort meets thoughtful design. The heart of the home is a spacious U-shaped kitchen that seamlessly flows into the open-concept living and dining areas, perfect for both everyday living and entertaining. With 3 bedrooms and 2 bathrooms, this light-filled home is crafted with your family's lifestyle in mind. The primary suite features a serene bath retreat with a separate garden tub and shower, offering the perfect blend of relaxation and functionality.

Landscaping shown is for illustrative purposes only and may include optional upgrades not included in the landscape package per the list price

FEATURES:

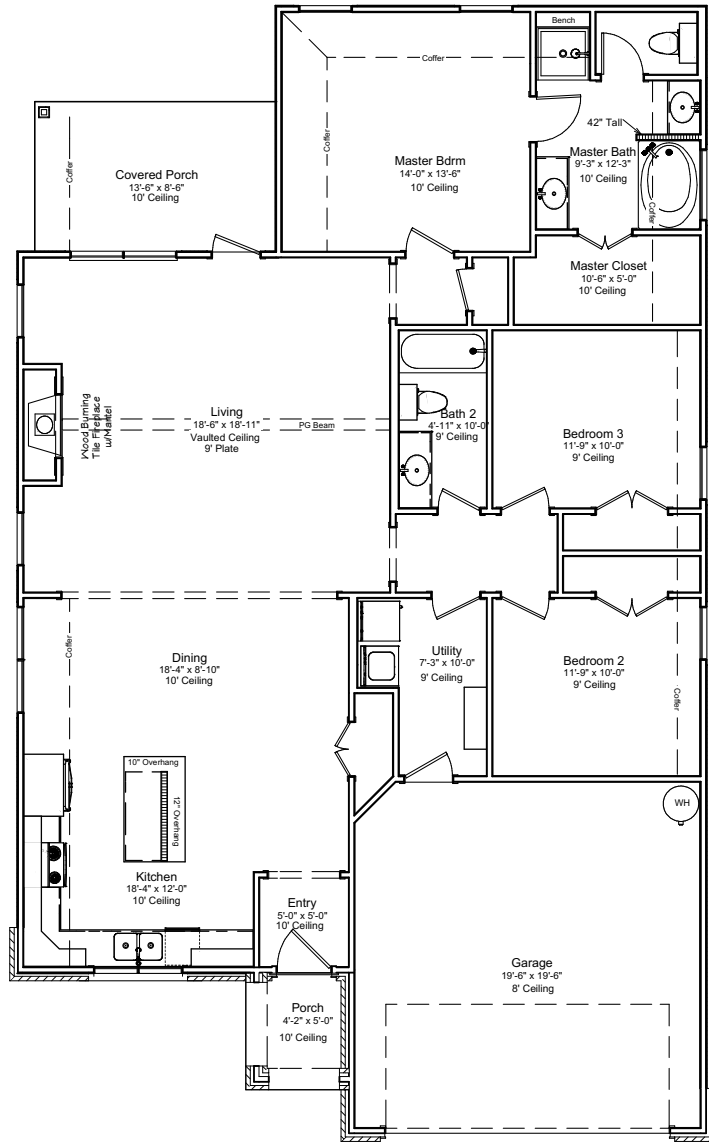
Covered Back Porch | Granite Countertops | Mudroom Built-In
Wood Burning Fireplace | Luxury Vinyl Plank Flooring | Stainless Appliances

COME HOME TO AVONLEY



Avonley Homes
979-321-7200
info@avonleyhomes.com

3238 WESLEY LOOP



3 BDRM | 2 BATH | 1725 SF

WWW.AVONLEYHOMES.COM

COME HOME TO AVONLEY | Avonley Homes is committed to giving families the home of their dreams. From simple comfort to expert craftsmanship, we promise you will be proud to call our house your home.