



PROVIDENCE
HOMES



Elevation A



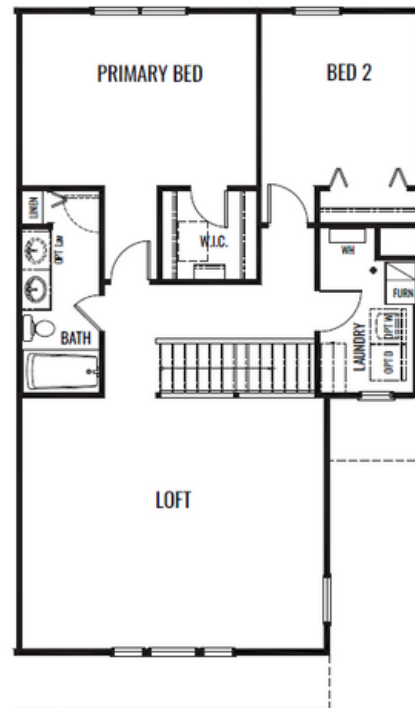
Elevation C

The Linden

1616 Sq. Ft. | 2 BDRM + Loft 1.5 BA



FIRST FLOOR



SECOND FLOOR

Stone Mill - Townhomes

Artist's renderings may vary in precise detail as compared to actual construction. All dimensions are approximate. Providence Real Estate Development, LLC. DBA Providence Homes in an effort to improve its product, reserves the right to make changes without notice. Actual home may be built as shown or reversed as dictated by engineered site plan. © Copyright 2025, Providence Real Estate Development, LLC.



PROVIDENCE
HOMES



Elevation A



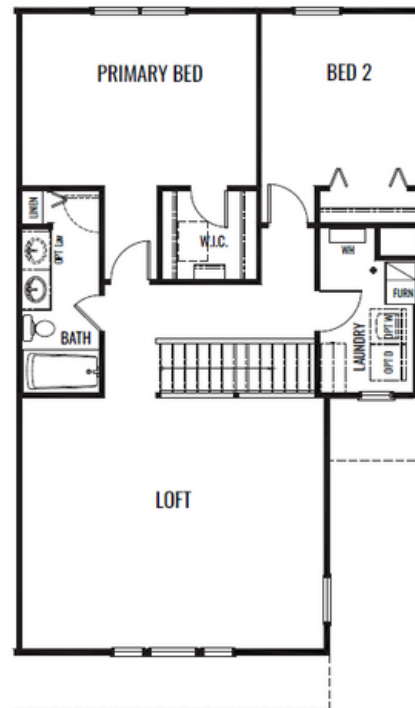
Elevation C

The Linden - End Condition

1616 Sq. Ft. | 2 BDRM + Loft 1.5 BA



FIRST FLOOR



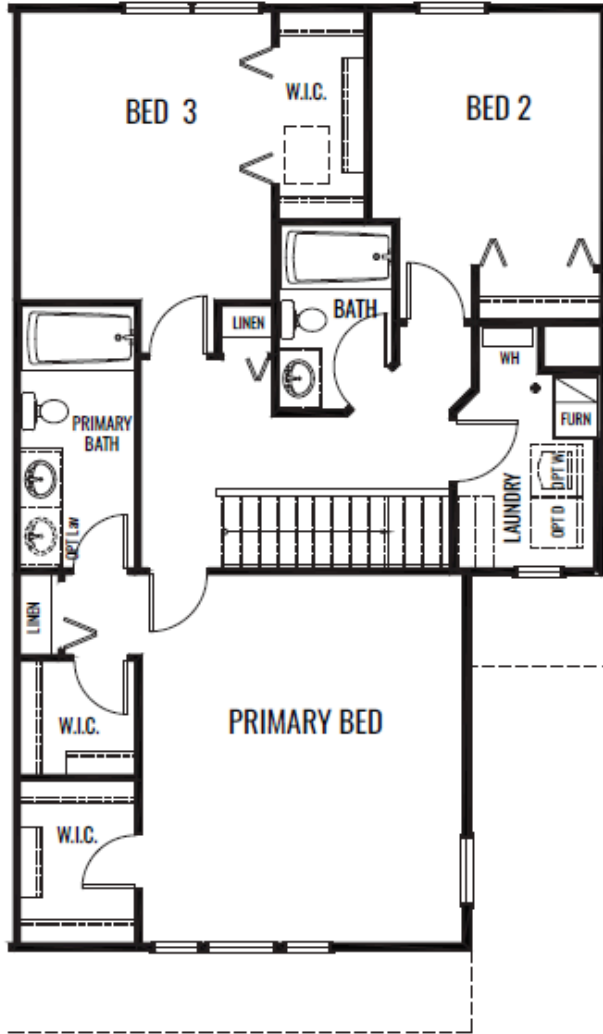
SECOND FLOOR

Stone Mill - Townhomes

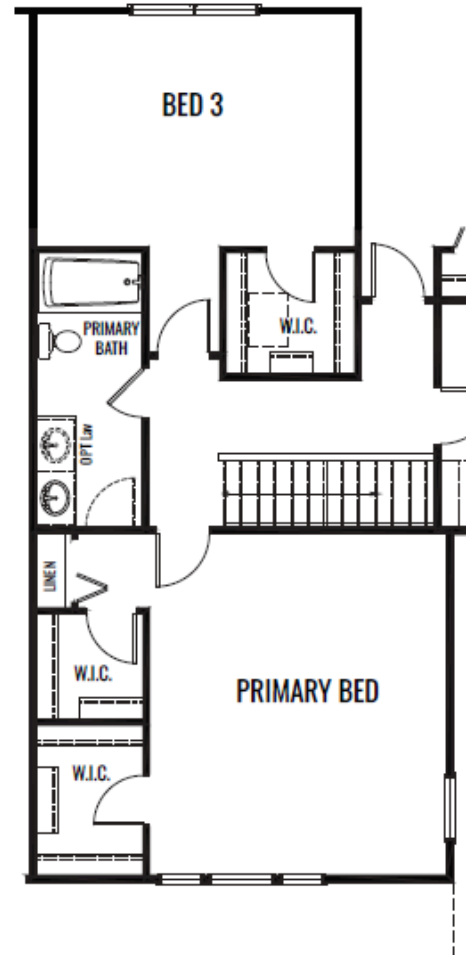
Artist's renderings may vary in precise detail as compared to actual construction. All dimensions are approximate. Providence Real Estate Development, LLC. DBA Providence Homes in an effort to improve its product, reserves the right to make changes without notice. Actual home may be built as shown or reversed as dictated by engineered site plan. © Copyright 2025, Providence Real Estate Development, LLC.

The Linden

OPTIONS



OPT GRAND PRIVATE BATH



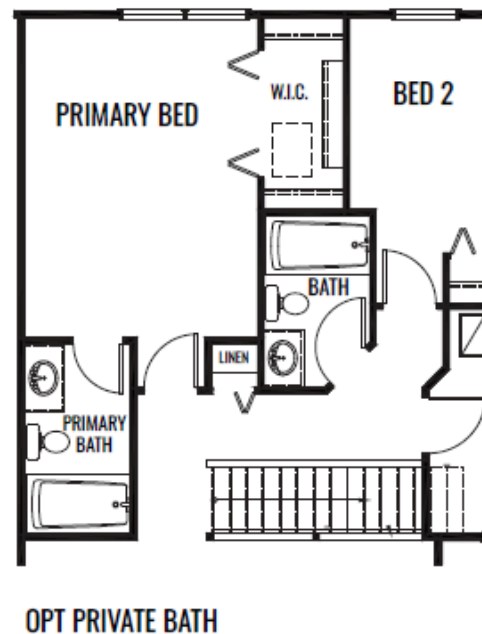
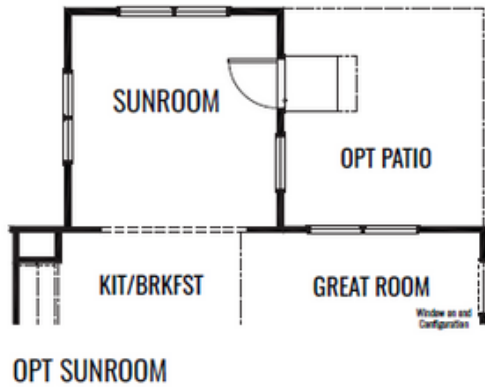
OPT GRAND PRIMARY BEDROOM

Stone Mill - Townhomes

Artist's renderings may vary in precise detail as compared to actual construction. All dimensions are approximate. Providence Real Estate Development, LLC. DBA Providence Homes in an effort to improve its product, reserves the right to make changes without notice. Actual home may be built as shown or reversed as dictated by engineered site plan. © Copyright 2025, Providence Real Estate Development, LLC.

The Linden

OPTIONS



Stone Mill - Townhomes

Artist's renderings may vary in precise detail as compared to actual construction. All dimensions are approximate. Providence Real Estate Development, LLC. DBA Providence Homes in an effort to improve its product, reserves the right to make changes without notice. Actual home may be built as shown or reversed as dictated by engineered site plan. © Copyright 2025, Providence Real Estate Development, LLC.