

# Charleston Farmhouse

Approx 2,865 Living Sq. Ft.\*

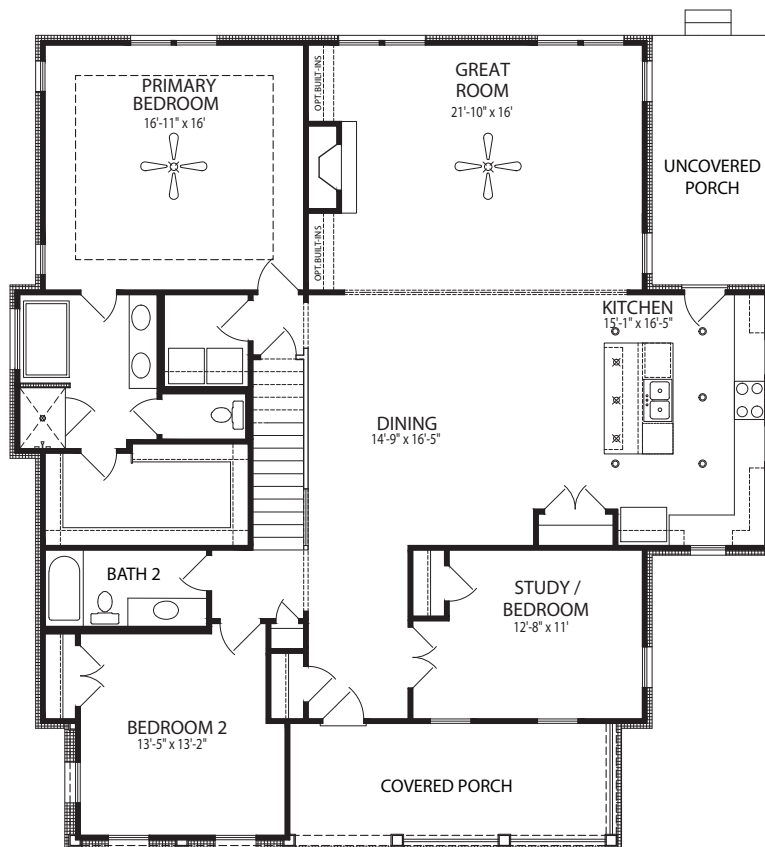
**3 Bedrooms, 3 Baths, Bonus Room,  
& Detached 2-Car Garage (not shown)**

APPROX. AREA	
FIRST LEVEL	2,033
SECOND LEVEL	832
TOTAL LIVING AREA	2,865
FRONT PORCH	171
DETACHED GARAGE	455
TOTAL COVERED	3,036

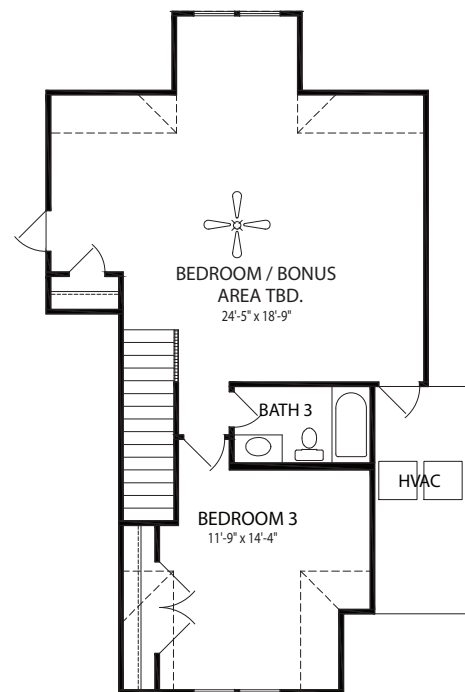
**Regent**  
HOMES

Offered By Regent Realty

[www.RegentHomesTN.com](http://www.RegentHomesTN.com)



First Level



Second Level

For More Information Contact:

\*Room dimensions and square footage are approximate and may vary per builder homesite. In the interest of continuous improvement, Regent Homes reserves the right to make modifications in exterior designs, architectural details, materials and specifications at any time without prior notice. All features, designs, and prices are subject to change without prior notice. The above illustration is for demonstration purposes only. Elevation may vary per builder homesite. Please consult working drawings for actual dimensions and information. ©2021 Regent Homes LLC.

All homes built by Regent Homes are built in planned communities that contain deed restrictions, use restrictions and maintenance fees. Please consult your sales representative to obtain an official copy of the deed restrictions.

