

# DESIGN

BURNET - 4440F



Modern Tudor



Hill Country



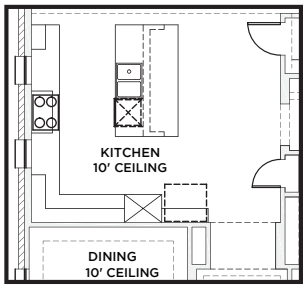
Farmhouse



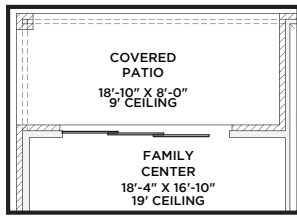
Craftsman



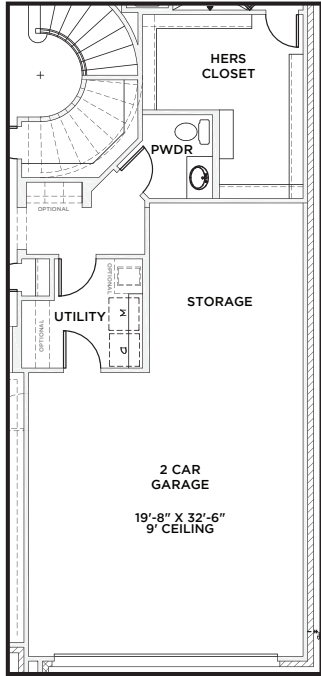
All Product including Architectural Designs, ©2000-2026, Shaddock Homes, LTD., All rights reserved. There may be existing or future design changes made in the floorplans, building products, methods, square footage or designs used in our homes that are not reflected in our information, sales center or in our models. The materials, designs, square footages, features, and amenities shown are based upon current development plans, which are subject to change without notice. No guarantee is made that the designs, square footages, materials, features, and amenities depicted by artist's renderings or otherwise described will be built, or if built, will be of the same type, size or nature as depicted or described. All stone elevations, metal roofs, cast stone door and window headers and solid sawn cedar posts are optional, but available via change order. Front doors will match the specification sheet or chosen door upgrade. Prices and terms subject to change without notice. REVISION DATE: 7.10.2018



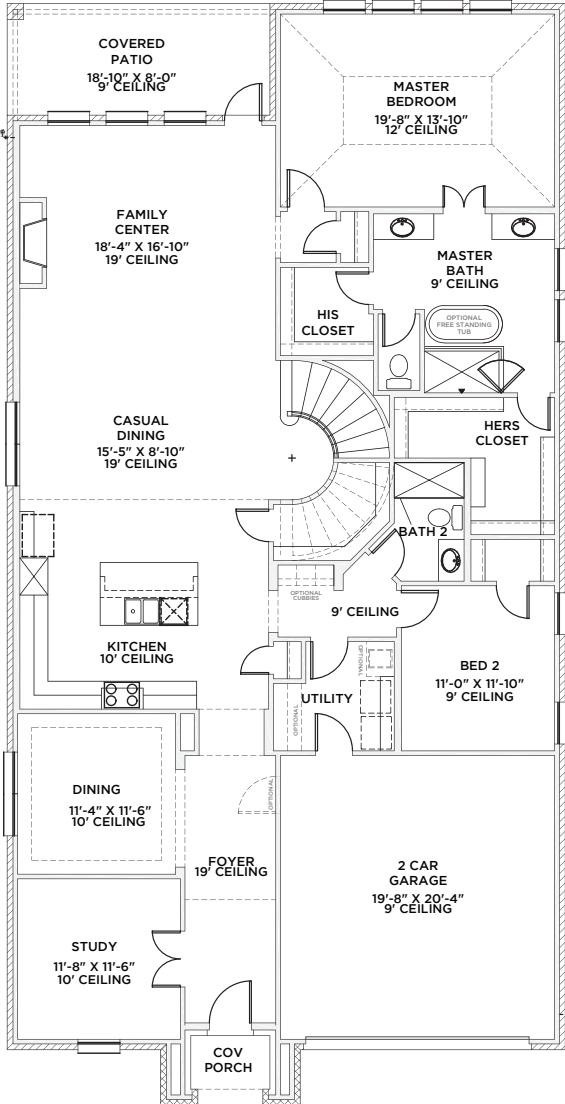
KITCHEN OPTION 3



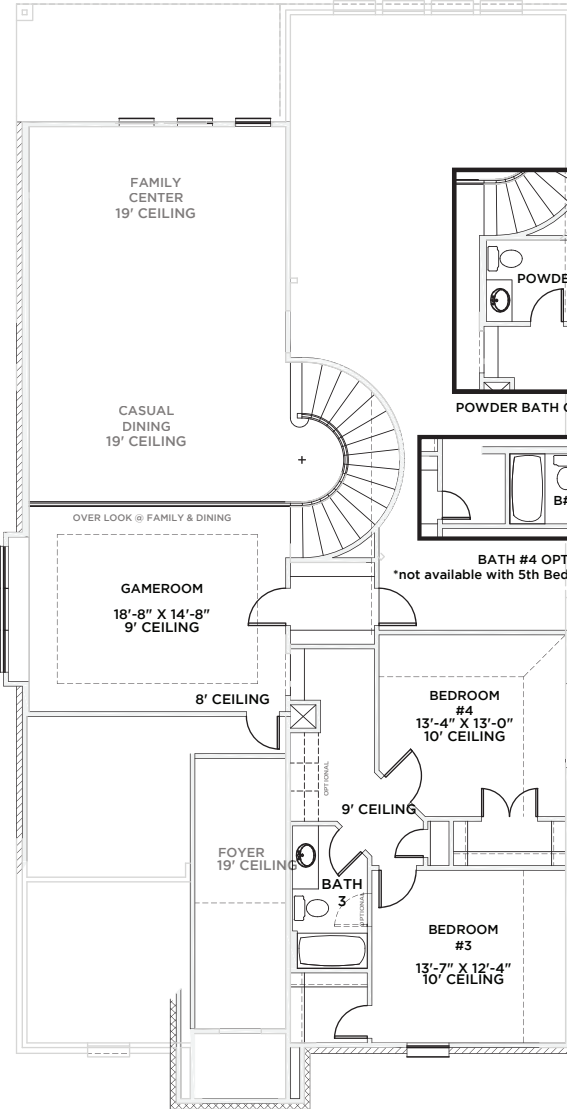
SLIDING GLASS DOORS  
@ FAMILY ROOM OPTION



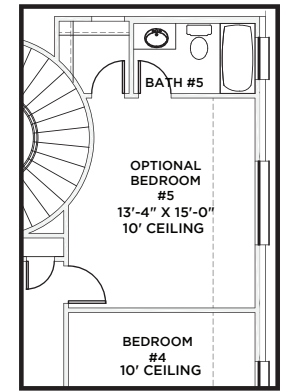
TANDEM GARAGE OPTION



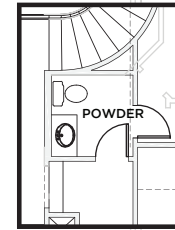
FIRST FLOOR



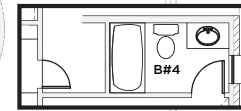
SECOND FLOOR



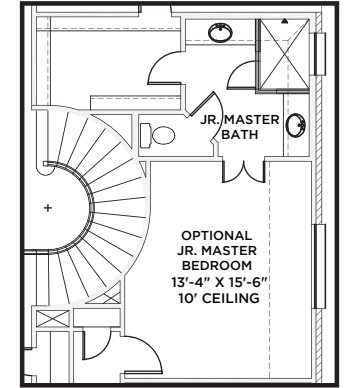
BR #5 OPTION



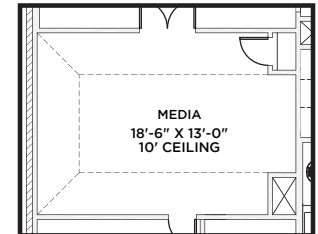
POWDER BATH OPTION



BATH #4 OPTION  
\*not available with 5th Bed or Junior Master



JR MASTER OPTION



MEDIA OPTION

## BURNET 4440 (71018)

	S.FT
First Floor	2412
Second Floor	958
<b>Total Living Area</b>	<b>3370</b>
2 Car Garage	430
Covered Porch	47
Covered Patio	151
<b>Total Area</b>	<b>3998</b>

Options	
Media Room	257
Bed 5 & Bath 4	288
Jr Master & Bath	411
Tandem Garage	141
Bath 4	55

SHADDOCK HOMES