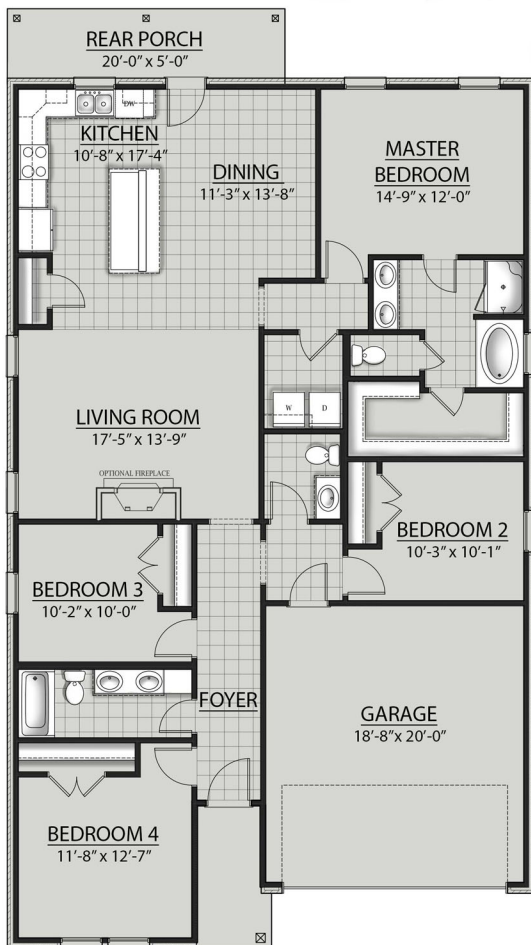


THE YUCCA B III PLAN



Living Area

1851 Square Feet

Total Area

2407 Square Feet

Features

- Brick & Siding Exterior
- Covered Rear Porch
- Two Car Garage
- Open Floor Plan
- Four Bedrooms, Two & One Half Bathrooms
- Recessed Can Lighting in Kitchen
- Double Master Vanity
- Separate Master Shower
- Master Bath Garden Tub
- Walk-In Master Closet



Floor plans and elevations are subject to change without notice. Elevations and renderings are artistic conceptions and may not accurately depict home styles. Characteristics, including but not limited to windows, doors, plan configurations and orientations are subject to change per home site. Information contained in this flyer is subject to errors, omissions, changes, withdrawals and prior sales without notice.