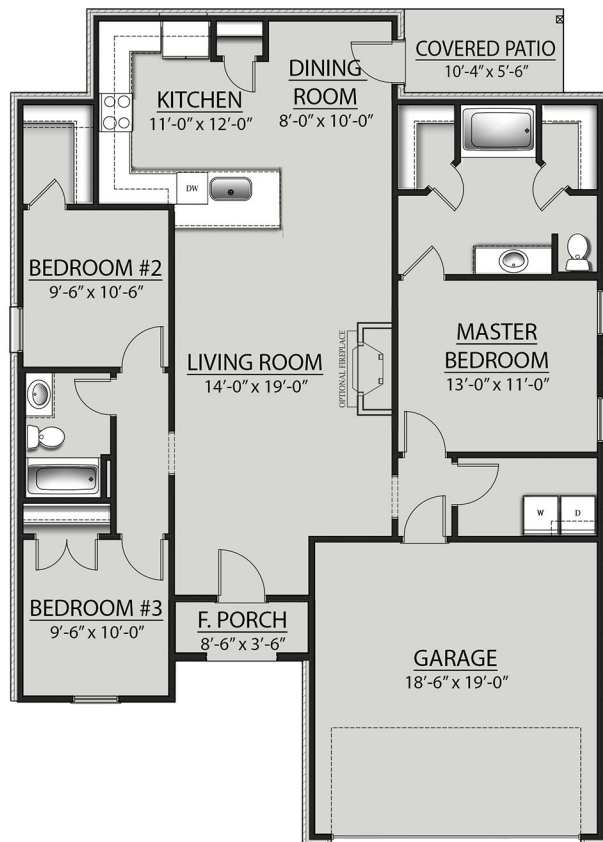


# THE WESTERHOLD H IV PLAN



---

## LIVING AREA

1411 Square Feet

---

## TOTAL AREA

1899 Square Feet

---

## FEATURES

- Open Floor Plan
- Three Bedrooms, Two Bathrooms
- Two Car Garage
- Brick & Siding Exterior
- Covered Patio
- Recessed Can Lighting in Kitchen
- Single Master Vanity
- Large Master Tub/Shower
- Walk-In Master Closets



Floor plans and elevations are subject to change without notice. Elevations and renderings are artistic conceptions and may not accurately depict home styles. Windows, doors and plan configurations are subject to change per elevation. Information contained in this flyer is subject to errors, omissions, changes, withdrawals and prior sales without notice.