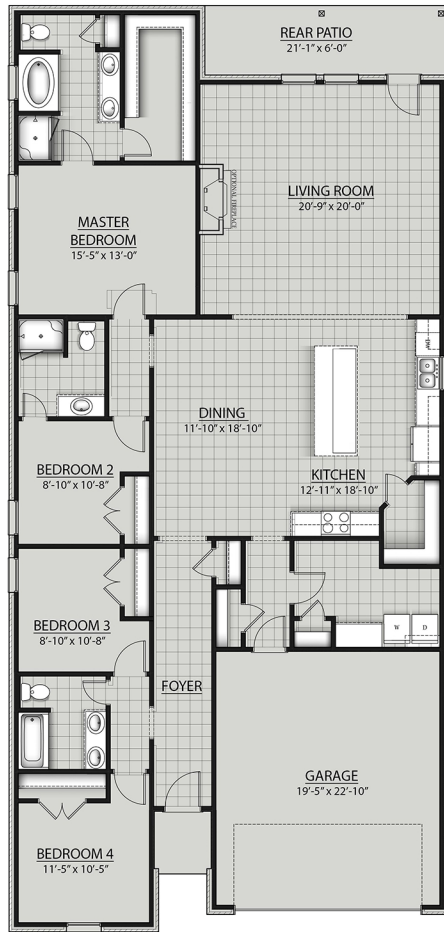


# THE CASTELLO B IV PLAN



## Living Area

2370 Square Feet

## Total Area

2988 Square Feet

## Features

- Brick & Stucco Exterior
- Open Floor Plan
- 4 Bedrooms, 3 Full Bathrooms
- Rear Patio
- Walk-In Pantry
- Recessed Can Lighting in Living, Dining, & Kitchen
- Large Walk-In Closet in Master
- Separate Master Shower
- Master Garden Tub
- Double Master Vanity



Floor plans and elevations are subject to change without notice. Elevations and renderings are artistic conceptions and may not accurately depict home styles. Characteristics, including but not limited to windows, doors, plan configurations and orientations are subject to change per home site. Information contained in this flyer is subject to errors, omissions, changes, withdrawals and prior sales without notice.