

The Augusta

BY TODD HOMES LLC

TODD
Homes
llc.com
Affordable Luxury



The Augusta - Elevation B



THE AUGUSTA FEATURES:

- Easy One-Level Living In This Custom Ranch by Todd Homes
- Step Into The Open Foyer & Experience The Magnificent Open Living Triangle of The Dining Room, Great Room & Kitchen
- Beautiful & Durable LVT Flooring In All Shared Living Spaces
- Spacious, Upscale Kitchen With Granite Countertops, Dining/Food Prep/Serving Island with Overhead Pendant Lights, Soft Close Shaker Cabinetry, Stainless Steel Appliances & Walk-In Pantry
- Expansive Great Room Flows Into The Kitchen
- Private Primary Suite Has a Walk-In Closet & Adjoining Spa-Like Bath with a Walk-In Shower, Quartz Topped Vanity & Dual Sinks
- Add The Optional Lower Level With Full Bath Rough-In & Egress

 3
Bedrooms

 2
Bathrooms

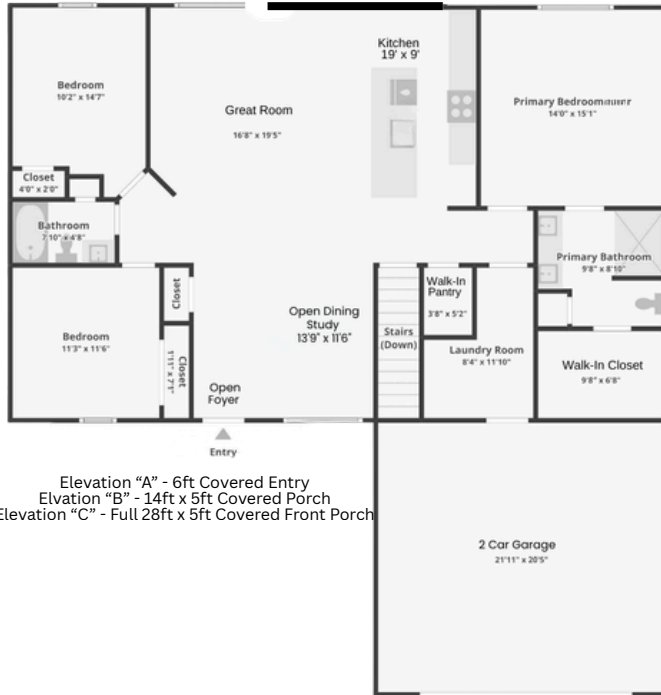
 2
Garage

 1600
Square Feet

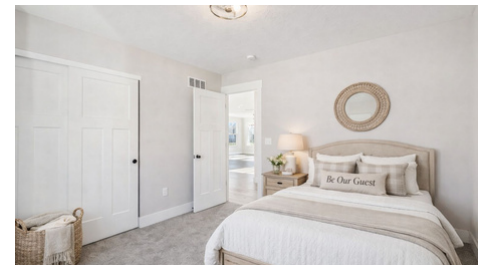
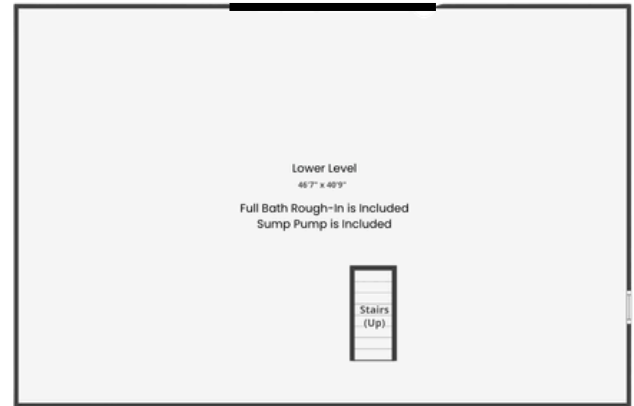
The Augusta

BY TODD HOMES LLC

TODD
Homes
llc.com
Affordable Luxury



Elevation "A" - 6ft Covered Entry
Elevation "B" - 14ft x 5ft Covered Porch
Elevation "C" - Full 28ft x 5ft Covered Front Porch



TOUR THE AUGUSTA

CONTACT US  513.823.3774  VISIT US: www.toddhomesllc.com

Copyright 2026 Todd Homes LLC. All rights reserved. Please note that floor plans, tours & photos are intended for illustrative purposes only and cannot be used for building or design purposes. Sizes and dimensions provided are approximate and not guaranteed. Floor plan and pictures shown may include upgrades & optional items; please ask your Sales Professional for details.