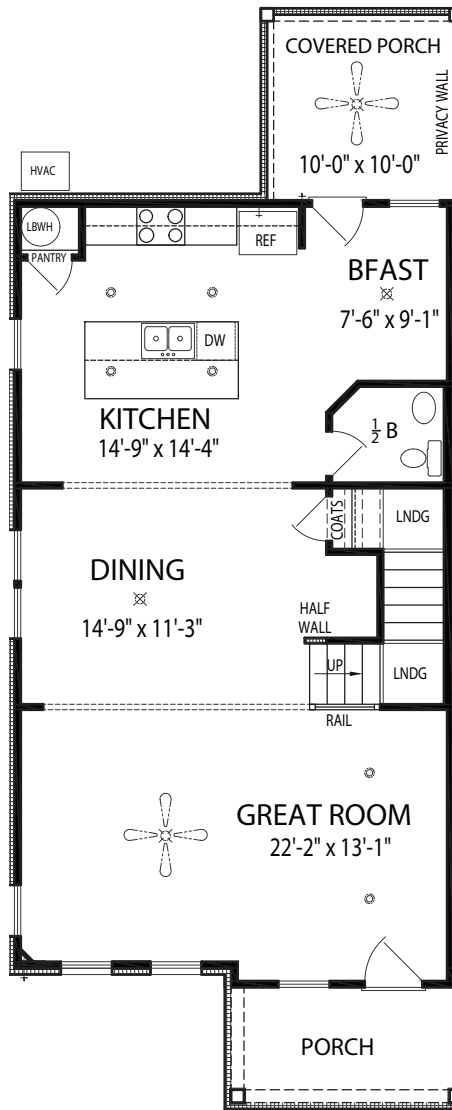


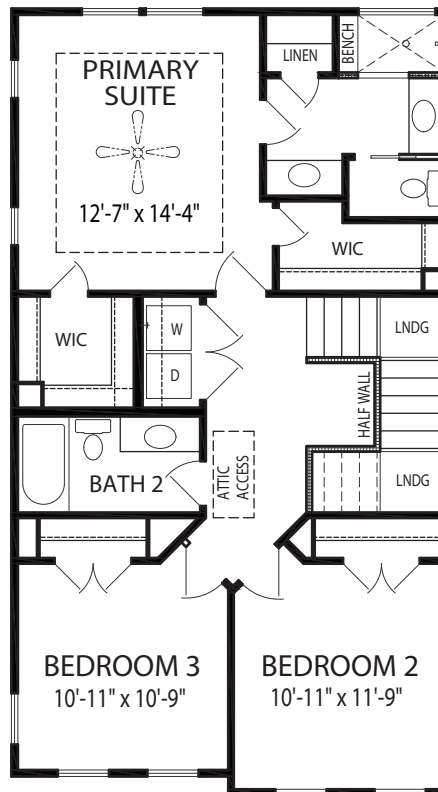
Westbrook

Approx. 1,786 Living Sq. Ft.*

**3 Bedrooms, 2.5 Baths, &
Detached 2-Car Garage (not shown)**

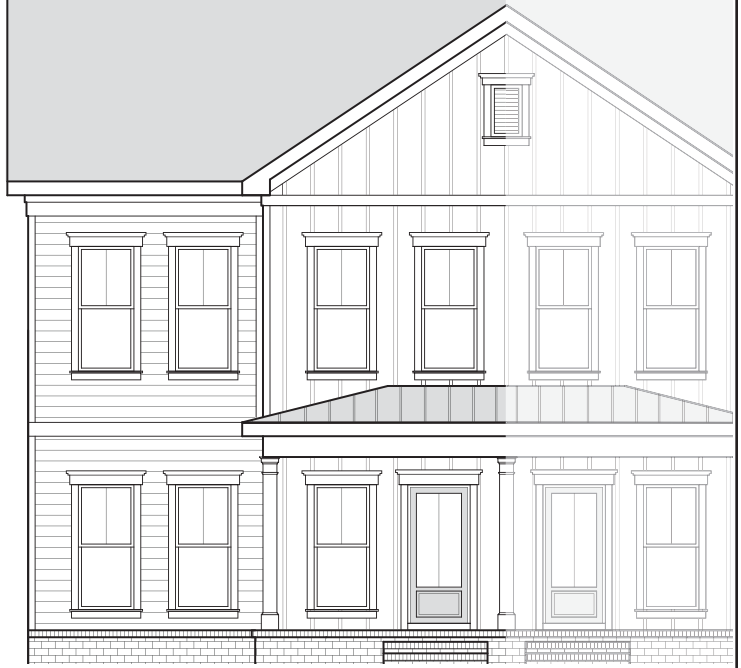


First Level



Second Level

Unit A



Elevation may vary per builder homesite

Regent
HOMES

Offered By Regent Realty

RegentHomesTN.com

APPROX. AREA	
FIRST LEVEL LIVING	925
SECOND LEVEL LIVING	861
TOTAL LIVING	1,786
FRONT PORCH	69
REAR PORCH	97
DETACHED 2-CAR GARAGE	410
TOTAL COVERED	2,362

*Room dimensions and square footage are approximate and may vary per builder homesite. In the interest of continuous improvement, Regent Homes reserves the right to make modifications in exterior designs, architectural details, materials and specifications at any time without prior notice. All features, designs, and prices are subject to change without prior notice. The above illustration is for demonstration purposes only. Elevation may vary per builder homesite. Please consult working drawings for actual dimensions and information. ©2024 Regent Homes LLC. All homes built by Regent Homes are built in planned communities that contain deed restrictions, use restrictions and maintenance fees. Please consult your sales representative to obtain an official copy of the deed restrictions.

