

DESIGN

BRENNHAM - 3101F



SHADDOCK
—HOMES—



Tudor Revival



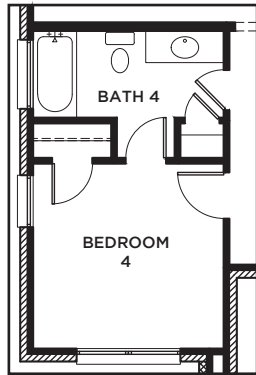
Craftsman



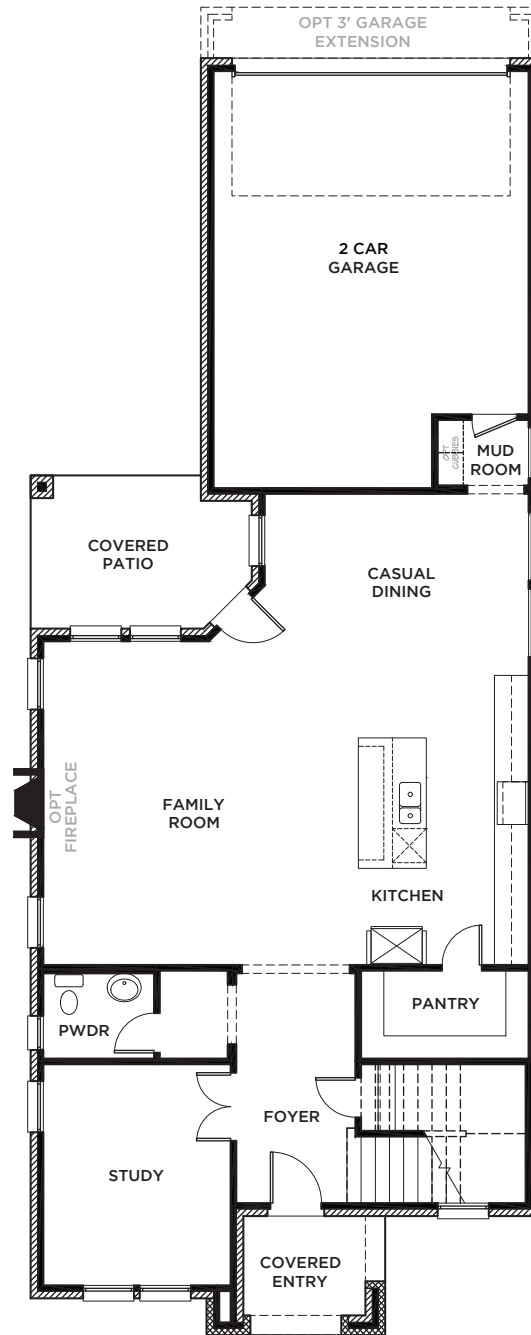
Modern Farmhouse



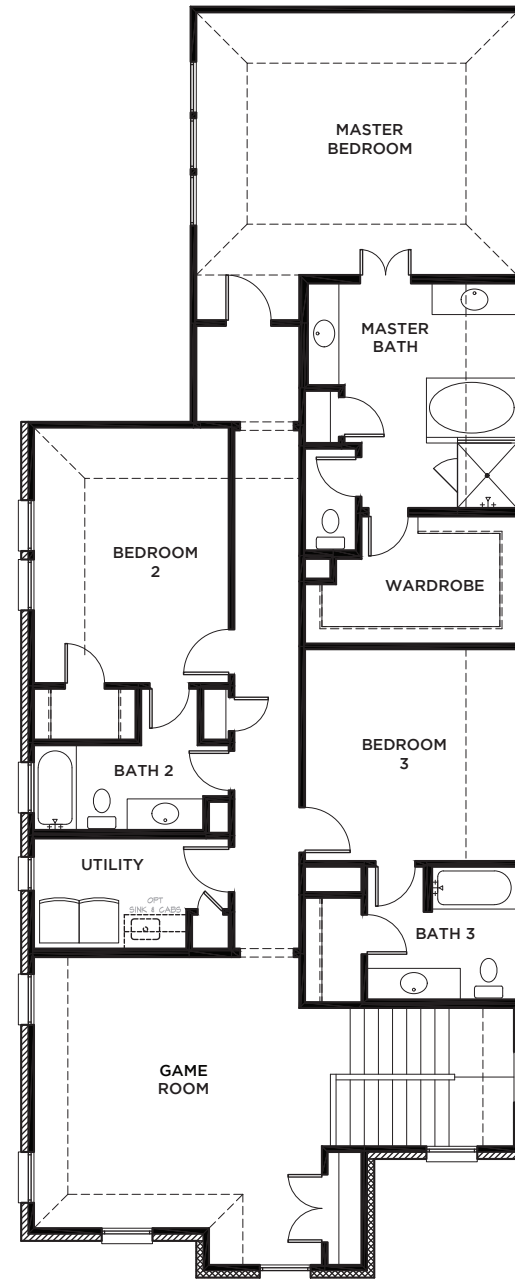
All Product including Architectural Designs, ©2000-2025, Shaddock Homes, LTD., All rights reserved. There may be existing or future design changes made in the floorplans, building products, methods, square footage or designs used in our homes that are not reflected in our information, sales center or in our models. The materials, designs, square footages, features, and amenities shown are based upon current development plans, which are subject to change without notice. No guarantee is made that the designs, square footages, materials, features, and amenities depicted by artist's renderings or otherwise described will be built, or if built, will be of the same type, size or nature as depicted or described. All stone elevations, metal roofs, cast stone door and window headers and solid sawn cedar posts are optional, but available via change order. Front doors will match the specification sheet or chosen door upgrade. Prices and terms subject to change without notice. **REVISION DATE: 6.16.2022**



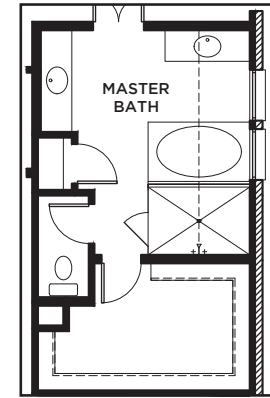
OPT BEDROOM 4 & BATH 4
ILO STUDY & POWDER



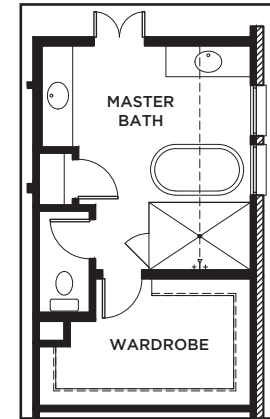
FIRST FLOOR



SECOND FLOOR



OPT LARGER
SHWR @
M BATH



OPT
FREE-STANDING
TUB/ SHWR
@ M BATH

BRENHAM 3101F (6.16.22)

	S.FT
First Floor	1267
Second Floor	1821
Total Living Area	3088
2 Car Garage	480
Covered Patio	109
Covered Porch	63
Total Area	3740

Options	
3 Car Garage	245
SHADDOCK HOMES	