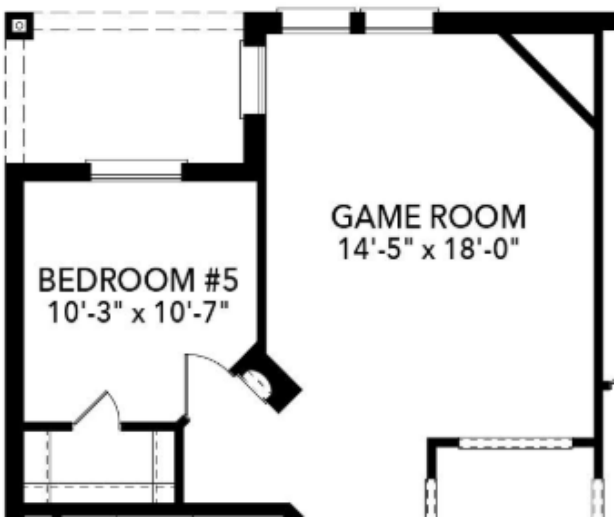


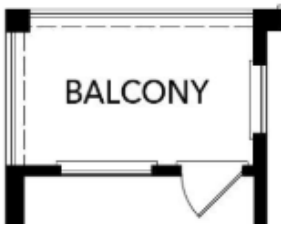
The Chessel



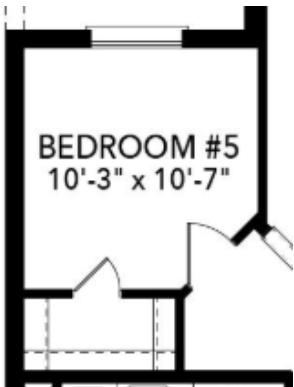
Bed 5 & Game Room



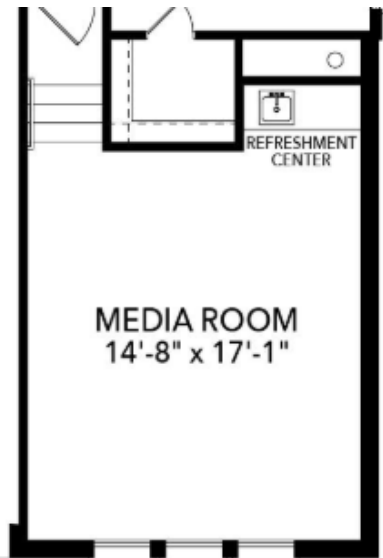
Bed 5 & Game Room with
Balcony and Exterior Door



Covered Balcony



Bed 5 ILO
Game Room



Refreshment Center



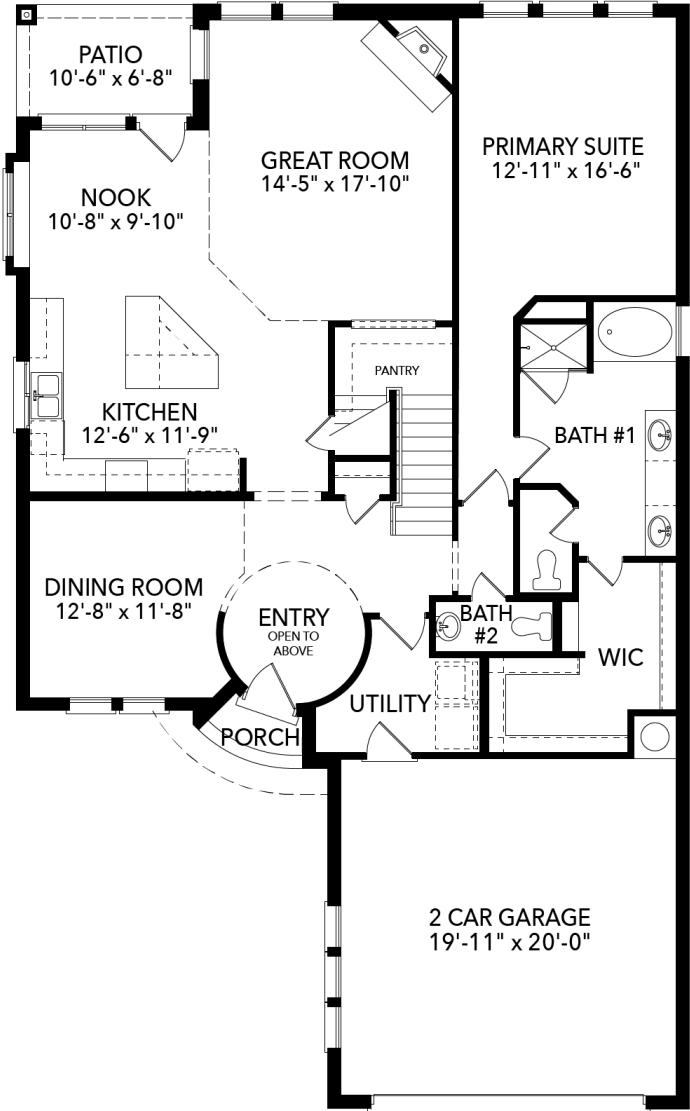
Elevation D



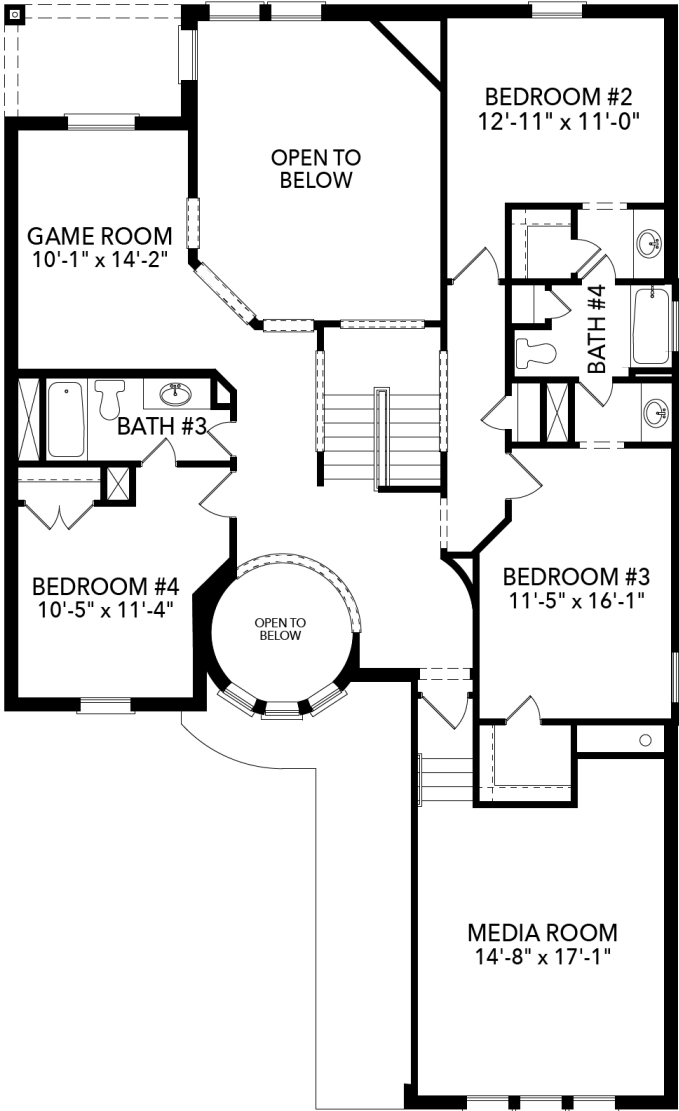
Elevation F

4 Bedrooms | 3.5 Bathrooms | 2-Car Garage | 3234 Sq Ft





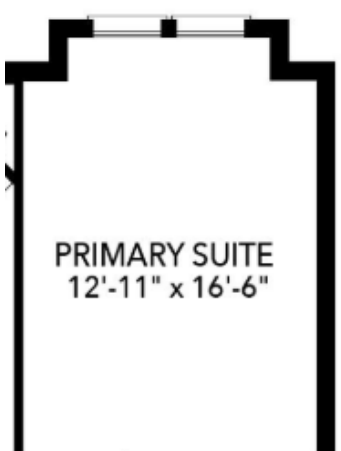
First Floor



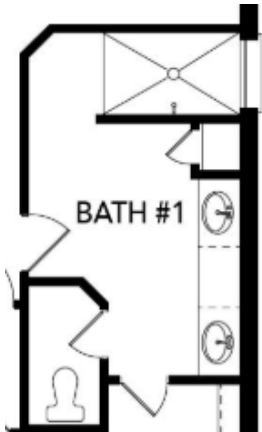
Second Floor



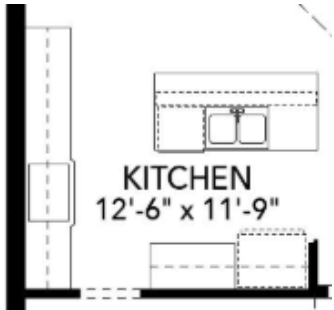
Bay Windows



Box Bay Windows



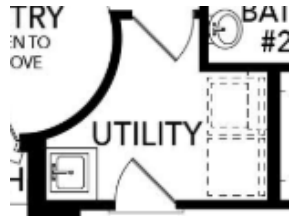
Walk-In Shower



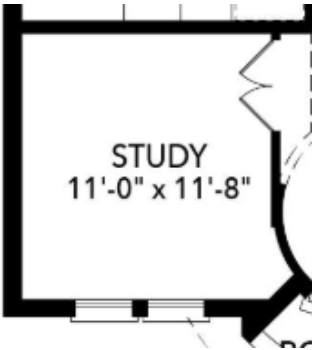
Alternate Kitchen



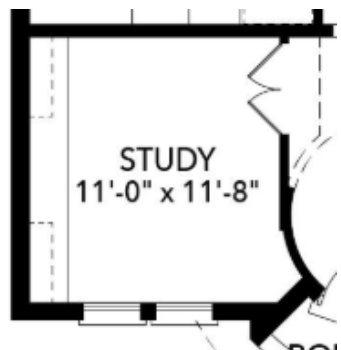
Oven Tower



Utility Sink



Study



Study Built-Ins



3-Car Garage

All discounts and/or incentives are subject to credit approval and use of builder's preferred lender and title company. Floorplans and renderings are artist's conceptions. Dimensions are approximate. Floor plans, room sizes, exteriors, and standard features may vary. Sandlin Homes reserves the right to modify the plan and specifications without notice or obligation. Copyright 2017 Sandlin Homes - All Rights Reserved

